

**QINGDAO J&G INTERNATIONAL TRADING CO.,LTD**  
**MULTISTAR INTERNATIONAL CANADA INC.**

Office address:

Room 3-B-1004,Hisense Powerise Valley,No.20 Zhuzhou Road,Qingdao,P.R.China 266100  
Tel:86-0532-80995165 Mobile:13864800220  
Fax:86-0532-80995336  
E-mail:dean@qdjggroup.com

Warehouse address:

Dayao road,Qingddao Economical Technical Development zone,in Qingdao city,P.R.China

[www.qdjgrop.com](http://www.qdjgrop.com)

**TIRES · WHEELS · TRACKS**



**QINGDAO J&G INTERNATIONAL TRADING CO.,LTD**  
**MULTISTAR INTERNATIONAL CANADA INC.**

Since 2005

## Leading supplier of tires and wheels, complete tire assemblies, and rubber tracks from China

### Our products main range:

Tires, Wheels, Tire assemblies, and Rubber tracks

### More optimum solutions:



### Our own brands:



### Other quality brands you can also trust



## FULLY FOCUSED ON WHEELS AND TIRES SINCE 2005

Established in 2005, Multistar is known as a specialist in tires and wheels for the agricultural, Mining and Industrial sector for off-the-road-applications, recently for the trucking and car sector as well since 2018. One of our greatest assets is availability of a complete range of tires, wheels, and rubber tracks. When you work with Multistar, you can depend on professional service, a diversified stock, individual customized solutions, high-quality tires and (made-to-measure) wheels at competitive prices. We join forces with original equipment manufactures to develop and deliver standard or bespoke wheel solutions to improve the performance of vehicles.

Our unique expertise and experience, combined with our excellent customer relations built up over more than twenty years form the basis for our leading position in the market. In addition to our house brand, Multistar, we work together with suppliers such as Tianli, Linglong, Advance, BOTO, Wanda and Accuride wheels and GKN Wheels, all of whom are global major players.

*Dean Ji*  
Owner and President

Agricultural Implements .....	4-11
-Dump Trailers, Silage Trailers, Manure Spreaders	
-Bale machinery, Wagon Gears	
-Feed mixers (TMR)	
-Tillage/Cultivators	
-Tip Trailers	
-Compact wheel loaders	
Agriculture .....	12-25
-Tractors	
-Turf Tractors	
-Combines	
-Grain carts/Chaser bins	
-Sprayers	
-Irrigations	
-Ammonia Wagons	
-Sugarcane harvester	
Industrial Vehicles .....	26-33
-Dumpers & Dump trucks	
-Loaders	
-Excavators	
-Skid steers	
-Backhoe loaders & Telehandlers	
-Mobile cranes	
-Conveyors	
Mining & Earthmoving .....	34-41
-Loader and graders	
-Scrapers	
-Rigid Dump Trucks	
-Articulated Dump Trucks	
-Underground mine	
Materials Handling & Port .....	42-43
Forestry .....	44-46
-Forestry trailers and forwarders	
-Skidders and Forestry harvesters	
Commercial Vehicle .....	47-48
-Trucks & Buses	
-Heavy load trailers	
Passenger Cars, SUV & Vans .....	49
Lawn, Garden & Turf .....	50
On/Off highway Trailers .....	51-52
-Long heavy haul trailers	
-Utility trailers	
Special Vehicles .....	53-54
-Snow removal Moto graders	
-Military vehicles	
Rubber Tracks .....	55
Wheel world .....	57-72
-Wheels for Mining and Earthmovers	
-Wheels for Agricultural and forestry	
-Port wheels	
-Forklift wheels	
-Wheels for Commercial truck/trailers (steel and aluminum)	
-Wheels for Car and Trailers	

Contact us:  
+86 13864800220 (China)  
+1 2042990448 (Canada)

Email us:  
dean@qdjgroup.com

Visit our Web site:  
<https://www.qdjgroup.com>

Follow us:  
Dean (Multistar tires and wheels) Ji | LinkedIn  
Multistar Tires and Wheels | Facebook



**Your one-stop supplier of tires, wheels, and rubber tracks**

## We have you covered

30,000+ Products  
12,000+ on daily stock

- Tires
- Wheels (and components for Multi-pieces OTR wheels)
- Tire & Wheel solutions (assembly)
- Rubber tracks
- Others

130+ countries  
exported

1 Subsidiary in  
Winnipeg, Canada

Top brands in China

- Top quality and manufacturing designs
- Most competitive prices
- Not only product and price, but also perfect solutions through our knowledge, inventory and experience.

## Agricultural Implements

Multistar – A premium tire and wheel solution perfect for agricultural implements that work hard in the field and roll fast on the road.



- Dump Trailers, Silage trailers, Manure Spreaders 5-6
- Bale machinery, Wagon Gears 7
- Feed mixers (TMR) 8
- Tillages/Cultivators 9
- Tip Trailers 10
- Compact wheel loaders 11

# Dump Trailers/Silage Trailers/Manure Spreaders

Tyre							Wheel								
Tyre Size	Pattern	Unloaded inflated OD. x SW. (mm)	Ply Rating	Type	Max. Load (kg) @Speed	Pressure	Rim Size	Stud Holes			Center Hole Dia.	Offset / ET.	Thickness (mm)	Model No.	
								No.	Dia.	PC Dia.			Ri	Dis	
26x12-12	TRC-02	655x308	8	TL	1265	3.0bar	12x10.5	4,5	Φ16	Φ100/Φ112	Φ60/Φ67	0	4	8	TW7752001
400/60-15.5	TRC-02	868x405	14	TL	2900	3.6bar	13.00x15.5	6	Φ21.5	Φ205	Φ161	0/-15/-25/-35	5	10	TW7752002
			16	TL	3650	4.9bar									TW7752003
			18	TL	3875	6.2bar									TW7752004
500/50-17	TRC-03	950x500	18	TL	4500	4.8bar	16.00x17	6/8	Φ21.5	Φ205/Φ275	Φ161/Φ221	0/-35/-92	5	10	TW7752005
520/50-17	TRC-03	966x521	14	TL	4750	3.6bar	16.00x17	6/8	Φ21.5	Φ205/Φ275	Φ161/Φ221	0/-35/-92	5	10	TW7752006
400/60-22.5	TRC-03	1070x400	16	TL	4000	3.5bar	11.75x22.5	8/10	Φ27	Φ275/Φ335	Φ221/Φ281	0/-30/-50	6	12	TW7752007
			18	TL	4500	4.3bar									TW7752008
500/45-22.5	TRC-03	1048x485	16	TL	4375	3.6bar	16.00x22.5	8/10	Φ27	Φ275/Φ335	Φ221/Φ281	0/-30/-50	6	12	TW7752009
500/60-22.5	TRC-03	1170x500	12	TL	4125	2.4bar	16.00x22.5	8/10	Φ27	Φ275/Φ335	Φ221/Φ281	0/-30/-50	6	12	TW7752010
			16	TL	4875	3.2bar									TW7752011
			18	TL	5150	3.6bar									TW7752012
550/45-22.5	TRC-03	1070x530	16	TL	5450	2.8bar	16.00x22.5	8/10	Φ27	Φ275/Φ335	Φ221/Φ281	0/-30/-50	6	12	TW7752013
560/45-22.5	TRC-03	1076x543	16	TL	4500	3.2bar	16.00x22.5	8/10	Φ27	Φ275/Φ335	Φ221/Φ281	0/-30/-50	6	12	TW7752014
550/60-22.5	TRC-03	1238x550	12	TL	4500	2.3bar	16.00x22.5	8/10	Φ27	Φ275/Φ335	Φ221/Φ281	0/-30/-50	6	12	TW7752015
			16	TL	5450	2.8bar									TW7752016
			18	TL	6495	3.2bar									TW7752017
600/50-22.5	TRC-03	1170x576	12	TL	4375	2.0bar	20.00x22.5	8/10	Φ27	Φ275/Φ335	Φ221/Φ281	0/-50	7	14	TW7752018
			16	TL	5150	2.6bar									TW7752019
			20	TL	7150	3.25bar									TW7752020
650/50-22.5	TRC-03	1125x645	16	TL	4500	2.0bar	20.00x22.5	8/10	Φ27	Φ275/Φ335	Φ221/Φ281	0/-50	7	14	TW7752021
600/55-22.5	TRC-03	1238x600	16	TL	5800	2.6bar	20.00x22.5	8/10	Φ27	Φ275/Φ335	Φ221/Φ281	0/-50	7	14	TW7752022
700/40-22.5	TRC-03	1180x700	16	TL	5300	2.2bar	24.00x22.5	8/10	Φ27	Φ275/Φ335	Φ221/Φ281	0/-50	7	14	TW7752023
			20	TL	7300	2.7bar									TW7752024
700/55-22.5	TRC-03	1238x700	16	TL	6700	2.4bar	24.00x22.5	8/10	Φ27	Φ275/Φ335	Φ221/Φ281	0/-50	7	14	TW7752025
600/55-26.5	TRC-03	1333x591	16	TL	6000	2.6bar	20.00x26.5	8/10	Φ27	Φ275/Φ225	Φ221/Φ176	0/-50	7	15	TW7752026
			18	TL	8175	2.7bar									TW7752027
			20	TL	8175	2.7bar									TW7752028
700/50-26.5	TRC-03	1333x700	12	TL	5800	1.8bar	24.00x26.5	8/10	Φ27	Φ275/Φ225	Φ221/Φ176	0/-50/-82	7	15	TW7752029
			16	TL	6700	2.4bar									TW7752030
			20	TL	8175	2.7bar									TW7752031
800/45-26.5	TRC-03	1343x800	16	TL	7300	2.2bar	28.00x26.5	8/10	Φ27	Φ275/Φ335	Φ221/Φ281	0/-50/-82	7	15	TW7752032
			20	TL	9250	2.7bar									TW7752033
650/65-30.5	TRC-03	1670x650	16	TL	7750	2.2bar	20.00x30.5	8/10	Φ27	Φ275/Φ335	Φ221/Φ281	0/-50/-82	7	15	TW7752034
			20	TL	10200	2.7bar									TW7752035
750/60-30.5	TRC-03	1670x750	16	TL	8500	2.2bar	24.00x30.5	8/10	Φ27	Φ275/Φ335	Φ221/Φ281	0/-50/-82	7	15	TW7752036
			20	TL	9500	2.2bar									TW7752037
850/50-30.5	TRC-03	1670x850	18	TL	11500	2.5bar	28.00x30.5	8/10	Φ27	Φ275/Φ335	Φ221/Φ281	0/-50/-82	7	15	TW7752038
			20	TL	11575	3.6bar									TW7752039



Tyre Size	Load/Speed Index	Pattern	TT/TL	Tread Depth mm	Rim	Out Diam. mm	Section Width mm	Static Loaded Radius mm+2.5%	Rolling Circumference mm+2.5%	Inflation Pressure Kpa	Load Capacity (kg) Static	Speed Km/h
500/50R17	149D	AGRO GRIP	TL	15	16	932	503	418	2810	450	7475	3250
500/60R22.5	155D	AGRO GRIP	TL	25	16	1170	506	528	3509	400	8910	3875
560/45R22.5	152D	AGRO GRIP	TL	25	16	1072	538	480	3220	400	8165	3550
560/60R22.5	161D	AGRO GRIP	TL	25	16	1256	562	559	3767	400	10640	4625
*560/60R22.5	164D	AGRO GRIP	TL	25	16	1256	562	559	3767	400	11500	5000
600/50R22.5	159D	AGRO GRIP	TL	25	20	1168	608	522	3507/	400	10060	4375
*600/50R22.5	167D	AGRO GRIP	TL	25	20	1168	608	522	3507	500	12535	5450
600/55R22.5	162D	AGRO GRIP	TL	25	20	1214	610	537	3643	400	10925	4750
650/50R22.5	163D	AGRO GRIP	TL	25	20	1208	654	532	3619	400	11210	4875
710/45R22.5	165D	AGRO GRIP	TL	25	24	1202	718	538	3607	400	11845	5150
*710/45R22.5	165D	AGRO GRIP	TL	25	24	1202	718	538	3607	400	11845	5150
600/55R26.5	165D	AGRO GRIP	TL	25	20	1320	610	586	3966	400	11845	5150
620/55R26.5	166D	AGRO GRIP	TL	25	20	1378	641	618	4142	400	12190	5300
650/55R26.5	169D	AGRO GRIP	TL	25	20	1396	650	625	4196	400	13340	5800
*650/55R26.5	178D	AGRO GRIP	TL	25	20	1396	650	625	4196	500	17250	7500
*710/50R26.5	170D	AGRO GRIP	TL	25	24	1368	728	613	4113	400	13800	6000
750/45R26.5	170D	AGRO GRIP	TL	25	24	1345	751	594	4044	400	13800	6000
*600/60R30.5	169D	AGRO GRIP	TL	25	20	1487	624	673	4477	400	13340	5800
*600/60R30.5	173D	AGRO GRIP	TL	25	20	1487	624	673	4477	400	14950	6500
*600/60R30.5	179D	AGRO GRIP	TL	25	20	1487	624	673	4477	500	17825	7750
*650/65R30.5	176D	AGRO GRIP	TL	25	20	1620	650	722	4873	400	16330	7100
*710/50R30.5	176D	AGRO GRIP	TL	25	24	1470	719	662	4427	400	16330	7100
*750/60R30.5	181D	AGRO GRIP	TL	25	24	1658	767	735	4986	400	18975	8250
*850/50R30.5	182D	AGRO GRIP	TL	25	28	1610	862	718	4844	400	19550	8500
500/45R22.5	146D	RIDEKING	TL	18	16	1022	503	468	3080	400	6900	3000
560/45R22.5	152D	RIDEKING	TL	25	16	1061	535	480	3190	400	8165	3550
560/60R22.5	161D	RIDEKING	TL	25	16	1223	541	548	3669	400	10640	4625
710/40R22.5	161D	RIDEKING	TL	25	24	1128	709	500	3388	400	10640	4625
710/45R22.5	165D	RIDEKING	TL	25	24	1198	719	539	3595	400	11845	5150
600/55R26.5	165D	RIDEKING	TL	25	20	1317	605	600	3947	400	11845	5150
650/55R26.5	169D	RIDEKING	TL	25	20	1374	643	650	4082	400	13340	5800
800/45R26.5	174D	RIDEKING	TL	25	28	1390	800	625	4110	400	15410	6700
750/60R30.5	181D	RIDEKING	TL	25	24	1660	770	738	4992	400	18975	8250
500/50R17	145D	FR	TL	15	16	925	497	412	2780	400	6670	2900
500/60R22.5	155D	FR	TL	26	16	1186	483	537	3558	400	8910	3875
560/45R22.5	152D	FR	TL	25	16	1085	523	486	3266	400	8165	3550
600/50R22.5	159D	FR	TL	26	20	1185	580	536	3556	400	10060	4375
710/45R22.5	165D	FR	TL	26	24	1189	678	530	3567	400	11845	5150
600/55R26.5	165D	FR	TL	26	20	1361	587	608	4046	400	11845	5150
710/50R26.5	170D1	FR	TL	26	24	1342	678	596	4034	400	13800	6000
560/60R22.5	161D	FR-1	TL	20.00	16.00	1277	522	570	3837	400	10640	4625
31x15.50R15	122B	G-K-F	TL	19	13LB	792	391		2378	280	3450	1500(50km/h)
19.0/45R17	137D	G-K-F	TL	18	16	858	477		2578	400	5290	2300
425/55R17	137D	G-K-F	TL	20	13	890	421				5290	2300
500/50R17	146D	G-K-F	TL	18	16	924	492				6900	3000
480/50R20	140D	G-K-F	TL	20	16	997	478				5750	2500
500/45R22.5	146D	G-K-F	TL	20	16	1028	493				6900	3000
500/50R17	146D	R305	TL	10.00	16.00							

# Bale machinery/Wagon Gears



Tyre															Wheel				
IMP-01	IMP-04	IMP-05	TRC-02	TRC-03	I1	Wide base													
Tyre Size	Pattern	Type	Ply Rating	Unloaded inflated OD. x SW.	Max. Load (kg)	Pressure	Speed	Rim Size	No.	Stud Holes Dia.	PC Dia.	Center Hole Dia.	Offset ET.	Thickness Rim Disc	Model No.				
9.5L-15	I-1	TL	8	241x765mm	1120	3.0bar	65km/h	7.00x15	6	φ15.5	152.4	117.5	29	4	8	775230550			
11L-15	I-1	TL	10	270x770mm	1320	3.0bar	65km/h	8Lx15	8	φ16.6	203.2	152.4	-35	4	8	775230552			
12.5L-15	I-1	TL	12	310x820mm	1550	3.0bar	65km/h	10Lx15	8	φ16.6	203.2	152.4	-35	4	8	775230555			
14L-16.1	I-1	TL	12	360x935mm	2120	3.0bar	65km/h	W11x16.1	8	φ16.6	203.2	152.4	29	5	10	775230561			
16.5L-16.1	I-1	TL	10	435x1025mm	2360	2.5bar	50km/h	W14x16.1	8	φ16.6	203.2	152.4	29	5	10	775230562			
10.0/75-15.3	IMP-01	TL	12	760x274mm	1700	6.4bar	40km/h	9.00x15.3	6	φ21.5	φ205	φ161	0/-20/-50	4	8	775230103			
10.0/75-15.3	IMP-01	TL	14	760x274mm	1900	7.1bar	40km/h	9.00x15.3	6	φ21.5	φ205	φ161	0/-20/-50	4	8	775230104			
10.0/75-15.3	IMP-01	TL	18	760x274mm	2360	7.1bar	40km/h	9.00x15.3	6	φ21.5	φ205	φ161	0/-20/-50	4	8	775230106			
10.0/75-15.3	IMP-01	TL	20	760x274mm	2595	7.1bar	40km/h	9.00x15.3	6	φ21.5	φ205	φ161	0/-20/-50	4	8	775230107			
11.5/80-15.3	IMP-01	TL	12	844x297mm	2180	5.6bar	40km/h	9.00x15.3	6	φ21.5	φ205	φ161	0/-20/-50	4	8	775230110			
11.5/80-15.3	IMP-01	TL	18	844x297mm	2900	7.1bar	40km/h	9.00x15.3	6	φ21.5	φ205	φ161	0/-20/-50	4	8	775230113			
11.5/80-15.3	IMP-01	TL	20	844x297mm	3035	7.1bar	40km/h	9.00x15.3	6	φ21.5	φ205	φ161	0/-20/-50	4	8	775230114			
12.5/80-15.3	IMP-01	TL	16	885x312mm	2800	6.5bar	40km/h	9.00x15.3	6	φ21.5	φ205	φ161	0/-20/-50	4	8	775230117			
12.5/80-15.3	IMP-01	TL	22	885x312mm	3280	6.5bar	40km/h	9.00x15.3	6	φ21.5	φ205	φ161	0/-20/-50	4	8	775230118			
12.5/80-15.3	IMP-01	TL	24	885x312mm	3550	6.5bar	40km/h	9.00x15.3	6	φ21.5	φ205	φ161	0/-20/-50	4	8	775230119			
14.0/65-16	IMP-05	TL	14	870x353mm	2900	5.5bar	40km/h	11.00x16	6	φ21.5	φ205	φ161	0	5	10	775230121			
400/60-15.5	IMP-04	TL	14	910x400mm	2725	4.9bar	40km/h	13.00x15.5	6	φ21.5	φ205	φ161	0/-15/-25/-35	5	10	775230128			
400/60-15.5	TRC-02	TL	14	910x400mm	2900	3.6bar	40km/h	13.00x15.5	6	φ21.5	φ205	φ161	0/-15/-25/-35	5	10	775230129			
15.0/55-17	IMP-05SUPER	TL	18	850x391mm	3250	6.5bar	40km/h	13.00x17	6/8	φ21.5	φ205/φ275	φ161/φ221	0/-45/45	5	10	775230218			
19.0/45-17	IMP-05SUPER	TL	14	865x453mm	2800	3.9bar	40km/h	16.00x17	6/8	φ21.5	φ205/φ275	φ161/φ221	0/-35/92	5	10	775230220			
500/50-17	IMP-05SUPER	TL	14	935x500mm	3550	3.6bar	40km/h	16.00x17	6/8	φ21.5	φ205/φ275	φ161/φ221	0/-35/92	5	10	775230222			
500/50-17	TRC-03 SUPER	TL	18	950x500mm	4125	4.4bar	40km/h	16.00x17	6/8	φ21.5	φ205/φ275	φ161/φ221	0/-35/92	5	10	775230307			
400/60-22.5	TRC-03 SUPER	TL	16	1070x400mm	4000	3.5bar	40km/h	11.75x22.5	8	φ27	φ275	φ221	0	6	12	775230308			
500/60-22.5	TRC-03 SUPER	TL	16	1190x500mm	4875	3.2bar	40km/h	16.00x22.5	8/10	φ27	φ275/φ335	φ221/φ281	0/-30/-50	6	12	775230309			
550/60-22.5	TRC-03 SUPER	TL	16	1235x550mm	5450	2.8bar	40km/h	16.00x22.5	8/10	φ27	φ275/φ335	φ221/φ281	0/-30/-50	6	12	775230310			
550/45-22.5	TRC-03 SUPER	TL	16	1070x550mm	4375	2.8bar	40km/h	16.00x22.5	8/10	φ27	φ275/φ335	φ221/φ281	0/-30/-50	6	12	775230311			
385/55R22.5	Wide base	TL	20	996x386mm	4500	900	K	11.75x22.5	10	φ32.5/φ26	φ285/φ335	φ221/φ281	0/120	7	14	775230248			
385/65R22.5	Wide base	TL	20	1072x389mm	4500	900	K	11.75x22.5	10	φ32.5/φ26	φ285/φ335	φ221/φ281	0/120	7	14	775230249			
425/65R22.5	Wide base	TL	20	1124x430mm	5150	825	K	13.00x22.5	10	26	φ285/φ335	φ220/φ281	0	7	14	775230250			
445/65R22.5	Wide base	TL	20	1150x454mm	5800	900	K	14.00x22.5	10	26	φ285/φ335	φ220/φ281	0	7	14	775230251			
445/50R22.5	Wide base	TL	20	1080x445mm	4625	850	L	14.00x22.5	10	26	φ285/φ335	φ220/φ281	0	7	14	775230252			

Tyre															Wheel				
Tyre Size	Pattern	Type	Ply Rating	Unloaded inflated OD. x SW.	Max. Load (kg)	Pressure	Speed	Rim Size	No.	Stud Holes Dia.	PC Dia.	Center Hole Dia.	Offset ET.	Thickness Rim Disc	Model No.				
500/60R22.5	FR	TL	155D	1186x483mm	3875	4.0bar	65km/h	16.00x22.5	8/10	φ27	φ275/φ335	φ221/φ281	20/-30/-50	5.5	11	775250523			
560/45R22.5	FR	TL	152D	1085x523mm	3550	4.0bar	65km/h	16.00x22.5	8/10	φ27	φ275/φ335	φ221/φ281	0/-30/-50	5.5	11	775250524			
560/60R22.5	FR	TL	161D	1277x522mm	4625	4.0bar	65km/h	16.00x22.5	8/10	φ27	φ275/φ335	φ221/φ281	0/-30/-50	5.5	11	775250525			
600/50R22.5	FR	TL	159D	1185x580mm	4375	4.0bar	65km/h	20.00x22.5	8/10	φ27	φ275/φ335	φ221/φ281	0/-50	6.3	11	775250526			
710/45R22.5	FR	TL	165D	1189x678mm	5150	4.0bar	65km/h	24.00x22.5	8/10	φ22	φ203.2/φ285.75	φ152.4/φ220	0/-50	6.3	11	775250527			
600/55R26.5	FR	TL	165D	1361x587mm	5150	4.0bar	65km/h	20.00x26.5	8/10	φ27	φ275/φ225	φ221/φ176	-50/0	6.3	12	775250528			
710/50R26.5	FR	T	170D	1342x678mm	6000	4.0bar	65km/h	24.00x26.5	8/10	φ22	φ203.2/φ285.75	φ152.4/φ220	0/-50/-82	6.3	12	775250529			



# Feed mixers (TMR)



Tyre															Wheel				
IMP-01	IMP-04	IMP-05	TRC-02	I1	Trailer														
Tyre Size	Pattern	Type	Ply Rating	Unloaded inflated OD. x SW.	Max. Load (kg)	Pressure	Speed	Rim Size	No.	Stud Holes Dia.	PC Dia.	Center Hole Dia.	Offset ET.	Thickness Rim Disc	Model No.				
10.0/75-15.3	IMP-01	TL	18	760x274mm	2360	7.1bar	40km/h	9.00x15.3	6	φ21.5	φ205	φ161	0/-20/-50	4	8	775230106			
10.0/75-15.3	IMP-01	TL	20	760x274mm	2595	7.1bar	40km/h	9.00x15.3	6	φ21.5	φ205	φ161	0/-20/-50	4	8	775230107			
11.5/80-15.3	IMP-01	TL	18	844x297mm	2900	7.1bar	40km/h	9.00x15.3	6	φ21.5	φ205	φ161	0/-20/-50	4	8	775230113			
11.5/80-15.3	IMP-01	TL	20	844x297mm	3035	7.1bar	40km/h	9.00x15.3	6	φ21.5	φ205	φ161	0/-20/-50	4	8	775230114			
11.5/80-15.3	IMP-01	TL	22	844x297mm	3160	7.1bar	40km/h	9.00x15.3	6	φ21.5	φ205	φ161	0/-20/-50	4	8	775230115			
12.5/80-15.3	IMP-01	TL	16	885x312mm	2800	6.5bar	40km/h	9.00x15.3	6	φ21.5	φ205	φ161	0/-20/-50	4	8	775230117			
12.5/80-15.3	IMP-01	TL	22	885x312mm	3280	6.5bar	40km/h	9.00x15.3	6	φ21.5	φ205	φ161	0/-20/-50	4	8	775230118			
12.5/80-15.3	IMP-01	TL	24	885x312mm	3550	6.5bar	40km/h	9.00x15.3	6	φ21.5	φ205	φ161	0/-20/-50	4	8	775230119			
400/60-15.5	IMP-04	TL	14	910x400mm	2725	4.9bar	40km/h	13.00x15.5	6	φ21.5	φ205	φ161	0/-15/-25/-35	5	10	775230128			
400/60-15.5	TRC-02	TL	14	910x400mm	2900	3.6bar	40km/h	13.00x15.5	6	φ21.5	φ205	φ161	0/-15/-25/-35	5	10	775230129			
15.0/55-17	IMP-05SUPER	TL	18	850x391mm	3250	6.5bar	40km/h	13.00x17	6/8	φ21.5	φ205/φ275	φ161/φ221	0/-45/45	5	10	775230218			
15.0/55-17	IMP-05SUPER	TL	26	850x391mm	4325	6.5bar	40km/h	13.00x17	6/8	φ21.5	φ205/φ275	φ161/φ221	0/-45/45	5	10	775230219			
19.0/45-17	IMP-05SUPER	TL	18	865x453mm	4000	4.5bar	40km/h	16.00x17	6/8	φ21.5	φ205/φ275	φ161/φ221	0/-35/92	5	10	775230221			
11L-15	I-1	TL	10	270x770mm	1320	3.0bar	65km/h	8Lx15	8	φ16.6	203.2	152.4	-35	4	8	775230552			
12.5L-15	I-1	TL	12	310x820mm	1550	3.0bar	65km/h	10Lx15	8	φ16.6	203.2	152.4	-35	4	8	775230555			
14L-16.1	I-1	TL	12	360x935mm	2120	3.0bar	65km/h	W11x16.1	8	φ16.6	203.2	152.4	29	5	10	775230561			
16.5L-16.1	I-1	TL	10	435x1025mm	2360	2.5bar	50km/h	W14x16.1	8	φ16.6	203.2	152.4	29	5	10	775230562			
19L-16.1	I-1	TL	10	490x1100mm	2725	2.2bar	50km/h	W16x16.1	8	φ16.6	203.2	152.4	29	5	10	775230563			
21.5L-16.1	I-1	TL	14	550x1130mm	3550	2.5bar	50km/h	W18x16.1	8	φ16.6	203.2	152.4	29	5	10	775230564			
215/75R17.5	Trailer	TL	14	767x211mm	1650/1500	760/760	M	6.00x17.5	5	φ29	φ203.2	φ146	128	5	10	775230239			
235/75R17.5	Trailer	TL	14	797x233mm	1850/1700	760/760	M	6.75x17.5	6	φ32	φ205	φ161	125	5	12	775230240			
225/70R19.5	Trailer	TL	14	811x226mm	1800/1700	760/760	M	6.75x19.5	8	φ32	φ285	φ221	144	6	12	775230241			
245/70R19.5	Trailer	TL	14	839x248mm	2060/1950	760/760	M	7.50x19.5	6	φ32	φ222.25	φ164	147	7	12	775230242			
265/70R19.5	Trailer	TL	14	876x262mm	2500/2360	850/850	L	7.50x19.5	6	φ32	φ222.25	φ164	147	7	12	775230243			
435/50R19.5	Trailer	TL	20	931x438mm	4500	900	J	14.00x19.5	10	φ32.5	φ335	φ281	74	7	14	775230244			
275/70R22.5	Trailer	TL	18	958x276mm	3150/2900	900/900	J	8.25x22.5	8/10	φ32.5/φ26	φ285/φ335	φ221/φ281	169/120	7	14	775230245			
315/60R22.5	Trailer	TL	18	950x312mm	3550/3150	900/900	L	9.00x22.5	8/10	φ32.5/φ26	φ285.75/φ335	φ220/φ281	170/161	7	14	775230246			
315/80R22.5	Trailer	TL	20	1076x312mm	4000/3350	900/900	L	9.00x22.5	8/10										

# Tillage/Cultivators



**I1 IMP-01 TRC-02 TRC-03(FR) Wde base**

Tyre		Tyre				Wheel										
Size	Pattern	Type	Ply Rating	Unloaded inflated OD. x SW.	Max. Load (kg)	Pressure	Speed	Rim Size	No.	Stud Holes Dia.	PC Dia.	Center Hole Dia.	Offset ET.	Thickness Rim	Disc	Model No.
9.5L-14	I-1	TL	8	240x735mm	1090	3.0bar	65km/h	7.00x14	6	Φ15.5	Φ152.4	117.5	29	4	8	775230546
11L-14	I-1	TL	8	256x753mm	1120	3.0bar	65km/h	8.00x14	6	Φ15.5	152.4	117.5	29	4	8	775230547
6.70-15	I-1	TL	8	172x710mm	850	3.9bar	65km/h	4 1/2Kx15	6	Φ15.5	152.4	117.5	29	4	8	775230548
7.60-15	I-1	TL	8	193x734mm	1050	4.1bar	65km/h	5.50x15	6	Φ15.5	152.4	117.5	29	4	8	775230549
9.5L-15	I-1	TL	8	241x765mm	1120	3.0bar	65km/h	7.00x15	6	Φ15.5	152.4	117.5	29	4	8	775230550
11L-15	I-1	TT	10	270x770mm	1320	3.0bar	65km/h	8LBx15	6	Φ15.5	152.4	117.5	29	4	8	775230551
11L-15	I-1	TL	10	270x770mm	1320	3.0bar	65km/h	8LBx15	8	Φ16.6	203.2	152.4	-35	4	8	775230552
12.5L-15	I-1	TT	12	310x820mm	1550	3.0bar	65km/h	10LBx15	6	Φ15.5	152.4	117.5	29	4	8	775230554
12.5L-15	I-1	TL	12	310x820mm	1550	3.0bar	65km/h	10LBx15	8	Φ16.6	203.2	152.4	-35	4	8	775230555
7.00-12	IMP-01	TL	6	665x185mm	690	7.5bar	40km/h	5.00x12	5	Φ18.5	Φ140	Φ94	0	4	7	775230100
10.0/80-12	IMP-01	TL	10	710x264mm	1450	5.4bar	40km/h	7.00x12	6	Φ21.5	Φ205	Φ161	0	4	8	775230101
10.0/75-15.3	IMP-01	TL	10	760x274mm	1550	5.2bar	40km/h	9.00x15.3	6	Φ21.5	Φ205	Φ161	0/-20/-50	4	8	775230102
10.0/75-15.3	IMP-01	TL	12	760x274mm	1700	6.4bar	40km/h	9.00x15.3	6	Φ21.5	Φ205	Φ161	0/-20/-50	4	8	775230103
10.0/75-15.3	IMP-01	TL	18	760x274mm	2360	7.1bar	40km/h	9.00x15.3	6	Φ21.5	Φ205	Φ161	0/-20/-50	4	8	775230106
10.0/75-15.3	IMP-01	TL	22	760x274mm	2730	7.1bar	40km/h	9.00x15.3	6	Φ21.5	Φ205	Φ161	0/-20/-50	4	8	775230108
11.5/80-15.3	IMP-01	TL	10	844x297mm	1950	4.6bar	40km/h	9.00x15.3	6	Φ21.5	Φ205	Φ161	0/-20/-50	4	8	775230109
11.5/80-15.3	IMP-01	TL	12	844x297mm	2180	5.6bar	40km/h	9.00x15.3	6	Φ21.5	Φ205	Φ161	0/-20/-50	4	8	775230110
11.5/80-15.3	IMP-01	TL	16	844x297mm	2575	7.1bar	40km/h	9.00x15.3	6	Φ21.5	Φ205	Φ161	0/-20/-50	4	8	775230112
11.5/80-15.3	IMP-01	TL	18	844x297mm	2900	7.1bar	40km/h	9.00x15.3	6	Φ21.5	Φ205	Φ161	0/-20/-50	4	8	775230113
12.5/80-15.3	IMP-01	TL	16	885x312mm	2800	6.5bar	40km/h	9.00x15.3	6	Φ21.5	Φ205	Φ161	0/-20/-50	4	8	775230117
400/60-15.5	TRC-02	TL	14	910x400mm	2900	3.6bar	40km.h	13.00x15.5	6	Φ21.5	Φ205	Φ161	0/-15/-25/-35	5	10	775230129
500/50-17	TRC-03 FR	TL	18	950x500mm	4125	4.4bar	40km/h	16.00x17	6/8	Φ21.5	Φ205/Φ275	Φ161/Φ221	0/-35/-92	5	10	775230307
400/60-22.5	TRC-03 FR	TL	16	1070x400mm	4000	3.5bar	40km/h	11.75x22.5	8	Φ27	Φ275	Φ221	0	6	12	775230308
500/60-22.5	TRC-03 FR	TL	16	1190x500mm	4875	3.2bar	40km/h	16.00x22.5	8/10	Φ27	Φ275/Φ335	Φ221/Φ281	0/-30/-50	6	12	775230309
550/60-22.5	TRC-03 FR	TL	16	1235x550mm	5450	2.8bar	40km/h	16.00x22.5	8/10	Φ27	Φ275/Φ335	Φ221/Φ281	0/-30/-50	6	12	775230310
550/45-22.5	TRC-03 FR	TL	16	1070x550mm	4375	2.8bar	40km/h	16.00x22.5	8/10	Φ27	Φ275/Φ335	Φ221/Φ281	0/-30/-50	6	12	775230311
600/50-22.5	TRC-03 FR	TL	16	1170x600mm	5150	2.0bar	40km/h	20.00x22.5	8/10	Φ27	Φ275/Φ335	Φ221/Φ281	0/-50	7	14	775230312
385/55R22.5	Wide base	TL	20	996x386mm	4500	900	K	11.75x22.5	10	Φ32.5/Φ26	Φ285/Φ335	Φ221/Φ281	0/120	7	14	775230248
385/65R22.5	Wide base	TL	20	1072x389mm	4500	900	K	11.75x22.5	10	Φ32.5/Φ26	Φ285/Φ335	Φ221/Φ281	0/120	7	14	775230249
425/65R22.5	Wide base	TL	20	1124x430mm	5150	825	K	13.00x22.5	10	26	Φ285/Φ335	Φ220/Φ281	0	7	14	775230250
445/65R22.5	Wide base	TL	20	1150x454mm	5800	900	K	14.00x22.5	10	26	Φ285/Φ335	Φ220/Φ281	0	7	14	775230251
445/50R22.5	Wide base	TL	20	1080x445mm	4625	850	L	14.00x22.5	10	26	Φ285/Φ335	Φ220/Φ281	0	7	14	775230252

Tyre		Tyre				Wheel										
Size	Pattern	Type	Ply Rating	Unloaded inflated OD. x SW.	Max. Load (kg)	Pressure	Speed	Rim Size	No.	Stud Holes Dia.	PC Dia.	Center Hole Dia.	Offset ET.	Thickness Rim	Disc	Model No.
500/60 R22.5	FR	TL	155D	1186x483mm	3875	4.0bar	65km/h	16.00x22.5	8/10	Φ27	Φ275/Φ335	Φ221/Φ281	0/-30/-50	5.5	11	775250523
560/45 R22.5	FR	TL	152D	1085x523mm	3550	4.0bar	65km/h	16.00x22.5	8/10	Φ27	Φ275/Φ335	Φ221/Φ281	0/-30/-50	5.5	11	775250524
560/60 R22.5	FR	TL	161D	1277x522mm	4625	4.0bar	65km/h	16.00x22.5	8/10	Φ27	Φ275/Φ335	Φ221/Φ281	0/-30/-50	5.5	11	775250525
600/50 R22.5	FR	TL	159D	1185x580mm	4375	4.0bar	65km/h	20.00x22.5	8/10	Φ27	Φ275/Φ335	Φ221/Φ281	0/-30/-50	6.3	11	775250526
710/45 R22.5	FR	TL	165D	1189x678mm	5150	4.0bar	65km/h	24.00x22.5	8/10	Φ22	Φ203.2/Φ285	Φ221/Φ281	0	6.3	11	775250527
600/55 R26.5	FR	TL	165D	1361x587mm	5150	4.0bar	65km/h	20.00x26.5	8/10	Φ27	Φ275/Φ335	Φ221/Φ281	0	6.3	12	775250528
710/50 R26.5	FR	TL	170D	1342x678mm	6000	4.0bar	65km/h	24.00x26.5	8/10	Φ22	Φ203.2/Φ285	Φ221/Φ281	0	6.3	12	775250529



# Tip trailers

Tyre		Tyre				Wheel										
Size	Pattern	Type	Ply Rating	Unloaded inflated OD. x SW.	Max. Load (kg)	Pressure	Speed	Rim Size	No.	Stud Holes Dia.	PC Dia.	Center Hole Dia.	Offset ET.	Thickness Rim	Disc	Model No.
7.00-12	IMP-01	TL	6	665x185mm	690	7.5bar	40km/h	5.00x12	5	Φ18.5	Φ140	Φ94	0	4	7	775230100
10.0/80-12	IMP-01	TL	10	710x264mm	1450	5.4bar	40km/h	7.00x12	6	Φ21.5	Φ205	Φ161	0	4	8	775230101
10.0/75-15.3	IMP-01	TL	10	760x274mm	1550	5.2bar	40km/h	9.00x15.3	6	Φ21.5	Φ205	Φ161	0/-20/-50	4	8	775230102
10.0/75-15.3	IMP-01	TL	12	760x274mm	1700	6.4bar	40km/h	9.00x15.3	6	Φ21.5	Φ205	Φ161	0/-20/-50	4	8	775230103
10.0/75-15.3	IMP-01	TL	14	760x274mm	1900	7.1bar	40km/h	9.00x15.3	6	Φ21.5	Φ205	Φ161	0/-20/-50	4	8	775230104
10.0/75-15.3	IMP-01	TL	16	760x274mm	2060	7.1bar	40km/h	9.00x15.3	6	Φ21.5	Φ205	Φ161	0/-20/-50	4	8	775230105
10.0/75-15.3	IMP-01	TL	18	760x274mm	2360	7.1bar	40km/h	9.00x15.3	6	Φ21.5	Φ205	Φ161	0/-20/-50	4	8	775230106
10.0/75-15.3	IMP-01	TL	20	760x274mm	2595	7.1bar	40km/h	9.00x15.3	6	Φ21.5	Φ205	Φ161	0/-20/-50	4	8	775230107
10.0/75-15.3	IMP-01	TL	22	760x274mm	2730	7.1bar	40km/h	9.00x15.3	6	Φ21.5	Φ205	Φ161	0/-20/-50	4	8	775230108
11.5/80-15.3	IMP-01	TL	10	844x297mm	1950	4.6bar	40km/h	9.00x15.3	6	Φ21.5	Φ205	Φ161	0/-20/-50	4	8	775230109
11.5/80-15.3	IMP-01	TL	12	844x297mm	2180	5.6bar	40km/h	9.00x15.3	6	Φ21.5	Φ205	Φ161	0/-20/-50	4	8	775230110
11.5/80-15.3	IMP-01	TL	14	844x297mm	2430	6.5bar	40km/h	9.00x15.3	6	Φ21.5	Φ205	Φ161	0/-20/-50	4	8	775230111
11.5/80-15.3	IMP-01	TL	16	844x297mm	2575	7.1bar	40km/h	9.00x15.3	6	Φ21.5	Φ205	Φ161	0/-20/-50	4	8	775230112
11.5/80-15.3	IMP-01	TL	18	844x297mm	2900	7.1bar	40km/h	9.00x15.3	6	Φ21.5	Φ205	Φ161	0/-20/-50	4	8	775230113
11.5/80-15.3	IMP-01	TL	20	844x297mm	3035	7.1bar	40km/h	9.00x15.3	6	Φ21.5	Φ205	Φ161	0/-20/-50	4	8	775230114
11.5/80-15.3	IMP-01	TL	22	844x297mm	3160	7.1bar	40km/h	9.00x15.3	6	Φ21.5	Φ205	Φ161	0/-20/-50	4	8	775230115
12.5/80-15.3	IMP-01	TL	14	885x312mm	2650	5.8bar	40km/h	9.00x15.3	6	Φ21.5	Φ205	Φ161	0/-20/-50	4	8	775230116
12.5/80-15.3	IMP-01	TL	16	885x312mm	2800	6.5bar	40km/h	9.00x15.3	6	Φ21.5	Φ205	Φ161	0/-20/-50	4	8	775230117
400/60-15.5	IMP-04	TL	14	910x400mm	2725	4.9bar	40km.h	13.00x15.5	6	Φ21.5	Φ205	Φ161	0/-15/-25/-35	5	10	775230128
400/60-15.5	TRC-02	TL	14	910x400mm	2900	3.6bar	40km.h	13.00x15.5	6	Φ21.5	Φ205	Φ161	0/-15/-25/-35	5	10	775230129
15.0/55-17	IMP-05	TL	14	850x391mm	2575	4.9bar	40km/h	13.00x17	6/8	Φ21.5	Φ205/Φ275	Φ161/Φ221	0/45/45	5	10	775230217
15.0/55-17	IMP-05	TL	18	850x391mm	3250	6.5bar	40km/h	13.00x17	6/8	Φ21.5	Φ205/Φ275	Φ161/Φ221	0/45/45	5	10	775230218
19.0/45-17	IMP-05	TL	14	865x453mm	2800	3.9bar	40km/h	16.00x17	6/8	Φ21.5	Φ205/Φ275	Φ161/Φ221	0/-35/-92	5	10	775230220
19.0/45-17	IMP-05	TL	18	865x453mm	4000	4.5bar	40km/h	16.00x17	6/8	Φ21.5	Φ205/Φ275	Φ161/Φ221	0/-35/-92	5	10	775230221
500/50-17	IMP-05	TL	14	935x500mm	3550	3.6bar	40km/h	16.00x17	6/8	Φ21.5	Φ205/Φ275	Φ161/Φ221	0/-35/-92	5	10	775230222
500/50-17	IMP-05	TL	18	935x500mm	4120	4.4bar	40km/h	16.00x17	6/8	Φ21.5	Φ205/Φ275	Φ161/Φ221	0/-35/-92	5	10	775230223
500/50-17	TRC-03 FR	TL	18	950x500mm	4125	4.4bar	40km/h	16.00x17	6/8	Φ21.5	Φ205/Φ275	Φ161/Φ221	0/-35/-92	5	10	775230307
400/60-22.5	TRC-03 FR	TL	16	1070x400mm	4000	3.5bar	40km/h	11.75x22.5	8	Φ27	Φ275	Φ221	0			

# Compact wheel loaders

## Implement Diagonal/Radial (R-1)

Tyre size	Ply rating
7.00-12	10
26x12-12	10
10.0/75-15.3	10
11.5/80-15.3	10
400/60-15.5	14
31x15.50-15	10,12
31x15.50R15	122B
33x15.50R15	126B
16.5L-16.1	10
35x19-16.1	12
425/55R17	134D
500/50R17	145D
16/70-20	14
38x18-20	12
12.5-20	12
500/45-20	18
500/60-22.5	12,16
600/45-22.5	18
15.5/80-24	10
15.5/80-24	16



# Agriculture

We know how important an optimized farm applications is to any farmers' daily operation. That's why we offer industry-leading solutions with major brands of tires and art to date wheels and rubber tracks. From narrow-row sprayers to tractors, to grain carts/wagons, and to large combine harvester options, we have the tire and wheel solutions meet every agricultural tire and wheel requirement.



- Tractors 14-17
- Turf Tractors 18
- Combines 19-20
- Grain carts/Chaser bins 21
- Sprayers 22
- Irrigations 23
- Ammonia Wagons 24
- Sugarcane Harvesters 25

Agricultural Implements



For over forty years Tianli has delivered more value. Founded in 1985, manufactured at one of the world's most advanced facilities, and recognized for quality in 90 countries around the world, Tianli offers an extensive line of application-specific agricultural, forestry, Port and construction/mining tires that are also competitively priced.

Agriculture



## Tractors

TyreSize	Pattern	Load/Speed Index	TT/TL	Tread Depth	Rim	Out Diam. mm	Section Width mm	Static Loaded mm+-	Rolling Circumfer mm+-2.5%	Inflation Pressure Kpa	Load Capacity Static	SpeedKm/h
80/85/90 SERIES RADIAL												
TRA: R-1W												
280/85R20(11.2R20)	AG-R	112A8/112B	TL	42.00	10.00	986	282	446	2943	160	2575	1120
280/85R24(11.2R24)	AG-R	115A8/115B	TL	42.00	10.00	1080	285	494	3239	160	2795	1215
320/85R24 (12.4R24)	AG-R	122A8/122B	TL	43.00	11.00	1139	322	520	3400	160	3450	1500
340/85R24 (13.6R24)	AG-R	125A8/125B	TL	45.00	12.00	1191	353	547	3558	160	3795	1650
380/85R24 (14.9R24)	AG-R	131A8/131B	TL	47.00	12.00	1273	382	566	3794	160	4485	1950
420/85R24 (16.9R24)	AG-R	137A8/137B	TL	48.00	15.00	1322	439	593	3935	160	5290	2300
280/85R28(11.2R28)	AG-R	118A8/118B	TL	42.00	10.00	1182	283	540	3555	160	3035	1320
320/85R28 (12.4R28)	AG-R	124A8/124B	TL	43.00	11.00	1258	321	575	3776	160	3680	1600
340/85R28 (13.6R28)	AG-R	127A8/127B	TL	45.00	12.00	1308	353	598	3921	160	4025	1750
380/85R28 (14.9R28)	AG-R	133A8/133B	TL	47.00	13.00	1378	386	627	4124	160	4740	2060
420/85R28 (16.9R28)	AG-R	139A8/139B	TL	48.00	15.00	1438	439	637	4298	160	5590	2430
380/85R30 (14.9R30)	AG-R	135A8/135B	TL	46.00	13.00	1407	388	639	4218	160	5010	2180
420/85R30 (16.9R30)	AG-R	140A8/140B	TL	48.00	15.00	1483	439	674	4440	160	5750	2500
420/90R30(16.9R30)	AG-R	142A8/142B	TL	48.00	13.00	1496	434	679	4478	160	6095	2650
	AG-R	147A8/147B	TL							240	7070	3075
460/85R30 (18.4R30)	AG-R	145A8/145B	TL	50.00	16.00	1527	466	680	4566	160	6670	2900
380/85R34(14.9R34)	AG-R	137A8/137B	TL	46.00	12.00	1487	389	681	4470	160	5290	2300
420/85R34 (16.9R34)	AG-R	142A8/142B	TL	48.00	15.00	1594	439	710	4784	160	6095	2650
	AG-R	147A8/147B	TL							160	7070	3075
	AG-R	157A8/157B	TL							320	9490	4125
320/85R38(12.4R38)	AG-R	129A8/129B	TL	43.00	11.00	1496	310			160	4260	1850
380/80R38	AG-R	142A8/142B	TL	46.00	12.00	1595	377	738	4803	240	6095	2650
420/85R38 (16.9R38)	AG-R	144A8/144B	TL	48.00	15.00	1667	439	752	5014	160	6440	2800
460/85R38 (18.4R38)	AG-R	149A8/149B	TL	50.00	16.00	1737	470	776	5207	160	7475	3250
	AG-R	151A8/151B	TL							200	7935	3450
	AG-R	155A8/155B	TL							160	8910	3875
	AG-R	175A8/175B	TL							360	15865	6900
650/85R38	AG-R	173A8/176B	TL	60.00	20.00	2072	666	935	6192	240	16330	7100
460/85R42(18.4R42)	AG-R	151A8/151B	TL	50	16.00	1865	473	844	5611	160	7935	3450
	AG-R	157A8/157B	TL							160	9490	4125
520/85R42 (20.8R42)	AG-R	162A8/162B	TL	51.00	18.00	1958	530	875	5884	240	10925	4750
	AG-R	165A8/165B	TL							360	11845	5150
	AG-R	149A8/149B	TL							240	7475	3250
380/90R46	AG-R	159A8/159B	TL	47.00	12.00	1868	391	868	5633	400	10060	4375
VF380/90R46	AG-R	173B/173D	TL	47.00	13.00	1868	395	868	5633	400		6500
480/80R46 (18.4R46)	AG-R	158A8/158B	TL	49.00	16.00	1971	490	905	5936	240	9775	4250
520/85R46(20.8R46)	AG-R	158A8/152B	TL	51.00	18.00	2062	535	921	6205	160	9775	4250
*380/90R50	AG-R	158D/161A8	TL	44	DW12、DW13	1948	380	924	935	360	9775	4460
VF380/90R54	AG-R	176D	TL	44	DW12、DW13	2038	391			440	16330	7100
70/75 SERIES RADIAL												
TRA: R-1W												
360/70R24	AG-R	122A8/122B	TL	42	11	1135	354	518	3398	160	3450	1500
380/70R24	AG-R	125A8/125B	TL	42	12	1198	384	533	3574	160	3795	1650
420/70R24	AG-R	130A8/130B	TL	45	13	1231	426	563	3675	160	4370	1900
480/70R24	AG-R	138A8/138B	TL	47	15	1314	488	580	3913	160	5430	2360
360/70R28	AG-R	125A8/125B	TL	42	11	1258	356	566	3777	160	3795	920
380/70R28	AG-R	127A8/127B	TL	42	12	1304	382	589	3903	160	4025	1750
420/70R28	AG-R	133A8/133B	TL	45	13	1350	414	597	4044	160	4740	2060
480/70R28	AG-R	140A8/140B	TL	47	15	1431	477	643	4279	160	5750	2500
420/70R30	AG-R	134A8/134B	TL	45	13	1384	422	615	4153	160	4875	2120
480/70R30	AG-R	141A8/141B	TL	47	15	1463	480	653	4382	160	5920	2575
520/70R30	AG-R	151A8/151B	TL	48	16	1528	522	692	4572	240	7935	3450
600/70R30	AG-R	152A8/152B	TL	51	20	1610	586	716	4804	160	8165	3550
480/70R34	AG-R	143A8/143B	TL	47	15	1571	487	720	4717	160	6270	2725
520/70R34	AG-R	148A8/148B	TL	48	16	1639	530	739	4916	160	7245	3150
600/70R34	AG-R	160D/163A8	TL	51	20	1705	586	784	5107	240	11210	4875
IF710/75R34CFO	AG-R	178B/178D	TL	48	DW25	1912	736			240	21275	7500
480/70R38	AG-R	145A8/145B	TL	47	15	1683	483	763	5062	160	6670	2900
520/70R38	AG-R	150A8/150B	TL	48	16	1743	529	787	5238	160	7705	3350
	AG-R	155A8/158B	TL							160	8910	3875
	AG-R	170A8/170B	TL							280	13800	6000
710/70R38	AG-R	166A8/166B	TL	58	23	1950	741	863	5837	160	12190	5300
*1F800/70R38	AG-R	184B/184D	TL	60	27	2085	805	927	6190	240		9000
	AG-R	158A8/158B	TL							160	9775	4250
	AG-R	176A8/176B	TL							320	16330	7100
	AG-R	160A8/160B	TL							160	10350	4500
	AG-R	166A8/166B	TL							240	12190	5300
	AG-R	173A8/173B	TL							240	14950	6500
	AG-R	176A8/176B	TL							280	16330	7100
710/70R42	AG-R	175D/178A8	TL	62	23	2127	728	961	6356	240	17250	7500



Tyre Size	Pattern	Load/Speed Index	TT/TL	Tread Depth	Rim	Out Diam. mm	Section Width mm	Static Loaded Radius mm+2.5%	Rolling Circumference mm+2.5%	Inflation Pressure Kpa	Load Capacity (kg)	
				mm							Static	65
60/65SERIES RADIAL												
TRA: R-1W												
440/65R24	AG-R	128D/131A8	TL	45	14	1190	437	530	3556	160	4485	1800
480/65R24	AG-R	133D/136A8	TL	46	15	1224	469	541	3653	160	5150	2060
540/65R24	AG-R	140D/143A8	TL	48	16	1316	540	585	3918	160	6270	2500
440/65R28	AG-R	131D/134A8	TL	45	14	1288	439	579	3862	160	4875	1950
480/65R28	AG-R	136D/139A8	TL	46	15	1336	466	593	4002	160	5590	2240
540/65R28	AG-R	142D/145A8	TL	48	16	1424	533	631	4257	160	6670	2650
600/65R28	AG-R	147D/150A8	TL	49	18	1486	593	652	4364	160	7705	3075
	AG-R	154D/157A8								240	9490	3750
540/65R30	AG-R	143D/146A8	TL	48	16	1477	535	653	4422	160	6900	2725
800/65R32 (30.5LR32)	AG-R	172A8/172B	TL	57	25	1833	797	820	5460	240	14490	
	AG-R	172A8/178B								320	17250	
IF800/65R32	AG-R	181B/181D	TL	57	28	1833	797	820	5460	320	18975	8250
*IF900/60R32	AG-R	185B/185D	TL	56	31	1910	891	855	5688	320	21275	9250
540/65R34	AG-R	145D/148A8	TL	48	16	1581	539	716	4746	160	7245	2900
600/65R34	AG-R	151D/154A8	TL	49	18	1665	607	750	4992	160	8625	3450
540/65R38	AG-R	147D/150A8	TL	48	16	1682	539	759	5058	160	7705	3075
600/65R38	AG-R	153D/156A8	TL	49	18	1768	604	796	5311	160	9200	3650
650/65R38	AG-R	157D/160A8	TL	51	20	1812	653	815	5439	160	10350	4125
	AG-R	163D/166A8								240	12190	4875
*IF900/60R38CFO	AG-R	184B/184D	TL	63	31	2054	885			240	20700	9000
650/65R42	AG-R	158D/161A8	TL	51	20	1921	651	865	5775	160	10640	4250
	AG-R	165D/168A8								240	12880	5150
VF600/60R28	AgriKing	157D	TL	48	DW20B	585	1426	-	-	160	9480	4125
VF540/65R30	AgriKing	158D	TL	48	DW20B	-	-	-	-	160	8910	3875
VF600/60R30	AgriKing	158D	TL	48	DW20B	580	1482	-	-	160	9780	4250
VF710/60R38	AgriKing	171D	TL	58	DW25B	-	-	-	-	160	15150	6150
VF650/65R42	AgriKing	174D	TL	58	DW23B	658	1912	-	-	200	15400	6700
VF710/60R42	AgriKing	173D	TL	58	DW25B	688	1896	-	-	160	14950	6500

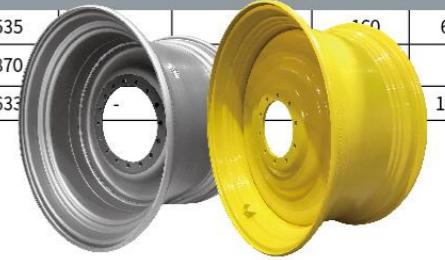
Good self-cleaning properties

Reinforced sidewalls keep tires from deforming during use

Tires are worn into the soil, TIANLI make sure that the tires will not cause pollution and guarantee farmers' future harvests



Tyre Size	Pattern	Load/Speed Index	TT/TL	Tread Depth mm	Rim	Out Diam. mm	Section Width mm	Static Loaded Radius mm+2.5%	Static Loaded Radius mm+2.5%	Inflation Pressure Kpa	Load Capacity (kg)	
											Static	65
GENESIS												
AGRS												
BRS												
PADDLE-II												
AG-R												
TRA: R-1												
210/95R16 (7.50R16)	GENESIS	106A8/106B	TL	32	7	795	215	368	2373	240	2185	950
260/70R16	GENESIS	109A8/109B	TL	31	8	767	250	345	2293	240	2370	1030
280/70R16	GENESIS	112A8/112B	TL	32	9	787	273	357	2350	240	2575	1120
210/95R18 (7.50R18)	GENESIS	108A8/108B	TL	32	7	849	215	393	2542	240	2300	1000
280/70R18	GENESIS	114A8/114B	TL	32	9	849	273	385	2542	240	2710	1180
210/95R20 (7.50R20)	GENESIS	110A8/110B	TL	32	7	895	215	413	2686	240	2440	1060
280/70R20	GENESIS	116A8/116B	TL	32.0	9.00	899	273	412	2698	240	2875	1250
300/70R20	GENESIS	120A8/120B	TL	33.0	9.00	948	290	427	2840	240	3220	1400
320/70R20	GENESIS	123A8/123B	TL	34.0	10.00	985	316	450	2947	240	3565	1550
360/70R20	GENESIS	129A8/129B	TL	41	W11	1054	357	-	-	240	4250	1850
380/70R20	GENESIS	132A8/132B	TL	42	W12	1074	370	-	-	240	4600	2000
420/65R20	GENESIS	135D/138A8	TL	38	13	1060	415	-	-	240	5450	2180
320/85R32 (12.4R32)	GENESIS	126A8/126B	TL	36	10	1354	311	623	4063	360	5730	2490
320/85R36 (12.4R36)	GENESIS	128A8/128B	TL	36	10	1448	313	667	4368	160	4140	1800
340/85R36 (13.6R36)	GENESIS	132A8/132B	TL	37	11	1489	357	680	4489	160	4600	2000
340/85R38 (13.6R38)	GENESIS	133A8/133B	TL	37	11	1540	353	711	4645	360	6810	2960
TRA: R-1												
380/85R26	AG RS	127A8/127B	TL	38	12	1295	378	592	3857	160	4025	1750
620/75R26	AG RS	166A8/166B	TL	45	20	1605	641	722	4778	320	12190	5300
	AG RS	158A8/158B								160	9775	4250
750/65R26	AG RS	166A8/166B	TL	46	25	1600	761	710	4761	240	12190	5300
	AG RS	172A8/172B								320	14490	6300
420/85R28	AG RS	139A8/139B	TL	39	15	1403	448	623	4206	160	5590	2430
380/85R30	AG RS	135A8/135B	TL	38	12	1407	380	635	4218	160	5010	2180
650/75R32	AG RS	172A8/172B	TL	48	20	1796	658	810	5362	320	14490	6300
*650/75R32	AG RS	180A8/180B	TL	48	20	1796	658	810	5362	500	18400	8000
*IF1050/50R32	AG RS	185B/185D	TL	40	36	1863	1038	833	5686	240	-	9250
420/80R46	AG RS	151A8/151B	TL	40	13	1848	398	849	5272	240	7935	3450
320/90R50	AG RS	150A8/150B	TL	36	10	1828	305	854	5527	360	7705	3350
12.4R54	AG RS	133A8/133B	TL	36	11	1921	315	907	5811	210	4740	2060
320/90R54 (12.4R54)	AG RS	156A8/156B	TL	36	10	1926	318	910	5826	440	9200	4000
TRA: R-2												
540/65R30	PADDLE-II	143D/146A8	TL	80.00	16.00	1511	535			160	6900	2725
VF900/60R38	PADDLE-II	193A8/193B	TL	100.00	30.00	2056	870					11500
650/65R42	PADDLE-II	158D/161A8	TL	80.00	20.00	1965	633				10640	4250



## Bias tractor rear and front tires

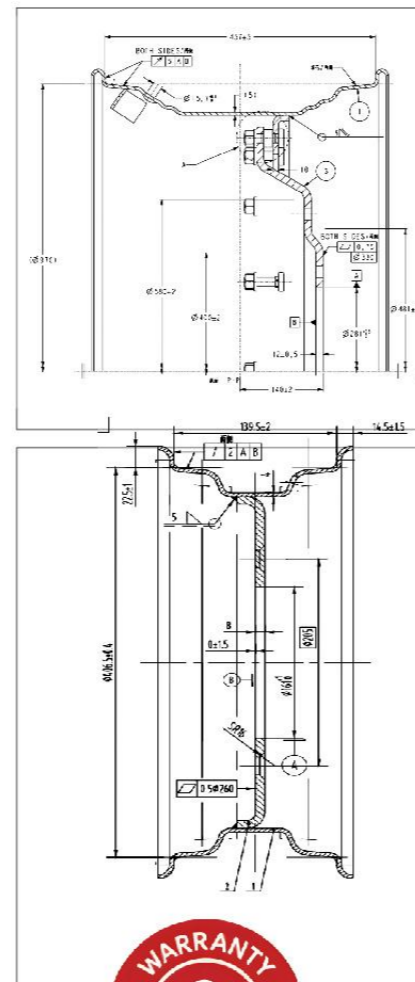


R-1	
Size	P.R.
5.00-12	8
6.00-12	6,8,10
6.00-14	6,12
5.50-16	4
6.00-16	6,8
6.50-16	6
7.00-12	6
7.00-16	10
7.50-16	6,8,12
7.50-20	6
8.3-20	6,8
8.3-24	6,8
9.5-16	6,16
9.5-20	8,10
9.5-22	8
9.5-24	8
9.5-28	8
9.5-32	8,12
250/80-18	8
10.0-15	10,14
10.0/75-15.3	10
10.0/65-16	8
11.2-20	6,8,10,12,14
11.2-24	8,10
11.2-28	10,14
11.5/80-15.3	8
26x12-12	8
29x12.5-15	6,12
11-32	8
11-38	8,10
12-38	6,8,10,12
12.4-24	8,10
12.4-28	8
12.4-32	12
12.4-48	12
12.4-54	12
12.5-20	
38x18-20	
13.2-16	8
13.6-16	8
13.6-20	8,10
13.6-24	6,8,10,12
13.6-26	8
13.6-28	8,10,12,16
13.6-38	10,14
13.8/70-20	12
13.8-20	10,12
14.9-24	8,10,12,14,16
14.9-26	6,8,10,12
14.9-28	6,8,10,12,14,16
14.9-30	8,10,12
14.9-38	10,12
14.9-48	12
31x15.5-15	8,12

R-1	
Size	P.R.
15.5/80-24	12, 16
15.5-38	10
400/60-15.5	10,14
400/55-17.5	12,18
405/70-20	14
405/70-24	14
16.0/70-20	10,14
440/80-24	16
15-24	10,12,14
16.9-24	10
16.9-26	12
16.9-28	8,10,12,14
16.9-30	8,10,12,14
16.9-34	8,10,12
16.9-38	8,10,12
18.4-16.1	8
18.4-26	8,10,12
18.4-30	8,10,12,14
18.4-34	8,10,12,14
18.4-38	8,10,12,16,20
18.4-42	10,12,16
20.8-38	12,14,20
20.8-42	12,16,18,20
21.5L-16.1	14
23.1-26	12,14,16,18
23.1-30	10,12
24.5-32	12,16,18
28L-26	16,18
29.5-25	20
30.5L-32	12,14,16,18
800/66-32	20
900/60-32	20

F-2(3RIB)	
Size	P.R.
4.00-15	4
4.00-19	4
5.00-15	4
5.50-16	6
6.00-16	6
6.50-16	6
7.50-16	6,8,10,12
10.00-16	10,12
11.00-16	10,12
7.5L-15	6
9.5L-15	8
11L-15	8

F-2(4RIB)	
Size	P.R.
10.00-16	8,10,12
11.00-16	8,10,12
11L-15	8



## Turf & Industrial solutions from Multistar tire & wheels



Multistar offers affordable tire and wheel solutions from mowing grass to combing beaches and race track preparation.

TyreSize	Pattern	Tyre		Max. Load (kg) @Speed	Pressure	RimSize	Wheel				Thickne s(mm) Ri	Model No.				
		Unloaded inflated OD.x SW. (mm)	Ply Rating				Type	StudHoles No.	CenterHole Dia.	Offset/ ET.						
400/60-15.5	TRC-02	868x405	14	TL	2900	3.6bar	13.00x15.5	6	Φ21.5	Φ205	Φ161	0/-15/-25/-35	5	10	TW7752002	
			16	TL	3650	4.9bar										TW7752003
			18	TL	3875	6.2bar										TW7752004
500/50-17	TRC-03	950x500	18	TL	4500	4.8bar	16.00x17	6/8	Φ21.5	Φ205/Φ275	Φ161/Φ221	0/-35/-92	5	10	TW7752005	
520/50-17	TRC-03	966x521	14	TL	4750	3.6bar	16.00x17	6/8	Φ21.5	Φ205/Φ275	Φ161/Φ221	0/-35/-92	5	10	TW7752006	
400/60-22.5	TRC-03	1070x400	16	TL	4000	3.5bar	11.75x22.5	8/10	Φ27	Φ275/Φ335	Φ221/Φ281	0/-30/-50	6	12	TW7752007	
			18	TL	4500	4.3bar										TW7752008
500/45-22.5	TRC-03	1048x485	16	TL	4375	3.6bar	16.00x22.5	8/10	Φ27	Φ275/Φ335	Φ221/Φ281	0/-30/-50	6	12	TW7752009	
500/60-22.5	TRC-03	1170x500	12	TL	4125	2.4bar	16.00x22.5	8/10	Φ27	Φ275/Φ335	Φ221/Φ281	0/-30/-50	6	12	TW7752010	
			16	TL	4875	3.2bar										TW7752011
			18	TL	5150	3.6bar										TW7752012
550/45-22.5	TRC-03	1070x530	16	TL	5450	2.8bar	16.00x22.5	8/10	Φ27	Φ275/Φ335	Φ221/Φ281	0/-30/-50	6	12	TW7752013	
560/45-22.5	TRC-03	1076x543	16	TL	4500	3.2bar	16.00x22.5	8/10	Φ27	Φ275/Φ335	Φ221/Φ281	0/-30/-50	6	12	TW7752014	
550/60-22.5	TRC-03	1238x550	12	TL	4500	2.3bar	16.00x22.5	8/10	Φ27	Φ275/Φ335	Φ221/Φ281	0/-30/-50	6	12	TW7752015	
			16	TL	5450	2.8bar										TW7752016
			18	TL	6495	3.2bar										TW7752017
600/50-22.5	TRC-03	1170x576	12	TL	4375	2.0bar	20.00x22.5	8/10	Φ27	Φ275/Φ335	Φ221/Φ281	0/-50	7	14	TW7752018	
			16	TL	5150	2.6bar										TW7752019
			20	TL	7150	3.25bar										TW7752020
650/50-22.5	TRC-03	1125x645	16	TL	4500	2.0bar	20.00x22.5	8/10	Φ27	Φ275/Φ335	Φ221/Φ281	0/-50	7	14	TW7752021	
600/55-22.5	TRC-03	1238x600	16	TL	5800	2.6bar	20.00x22.5	8/10	Φ27	Φ275/Φ335	Φ221/Φ281	0/-50	7	14	TW7752022	
700/40-22.5	TRC-03	1180x700	16	TL	5300	2.2bar	24.00x22.5	8/10	Φ27	Φ275/Φ335	Φ221/Φ281	0/-50	7	14	TW7752023	
			20	TL	7300	2.7bar										TW7752024
700/55-22.5	TRC-03	1238x700	16	TL	6700	2.4bar	24.00x22.5	8/10	Φ27	Φ275/Φ335	Φ221/Φ281	0/-50	7	14	TW7752025	
600/55-26.5	TRC-03	1333x591	16	TL	6000	2.6bar	20.00x26.5	8/10	Φ27	Φ275/Φ225	Φ221/Φ176	0/-50	7	15	TW7752026	
			18	TL												TW7752027
			20	TL	8175	2.7bar										TW7752028
700/50-26.5	TRC-03	1333x700	12	TL	5800	1.8bar	24.00x26.5	8/10	Φ27	Φ275/Φ225	Φ221/Φ176	0/-50/-82	7	15	TW7752029	
			16	TL	6700	2.4bar										TW7752030
			20	TL	8175	2.7bar										TW7752031
800/45-26.5	TRC-03	1343x800	16	TL	7300	2.2bar	28.00x26.5	8/10	Φ27	Φ275/Φ335	Φ221/Φ281	0/-50/-82	7	15	TW7752032	
			20	TL	9250	2.7bar										TW7752033
650/65-30.5	TRC-03	1670x650	16	TL	7750	2.2bar	20.00x30.5	8/10	Φ27	Φ275/Φ335	Φ221/Φ281	0/-50/-82	7	15	TW7752034	
			20	TL	10200	2.7bar										TW7752035
750/60-30.5	TRC-03	1670x750	16	TL	8500	2.2bar	24.00x30.5	8/10	Φ27	Φ275/Φ335	Φ221/Φ281	0/-50/-82	7	15	TW7752036	
			16	TL	9500	2.2bar										TW7752037
			18	TL	11500	2.5bar										TW7752038
			20	TL	11575	3.6bar										TW7752039





## AG-R

Tyre Size	Pattern	Load/Speed Index	TT/TL	Tread Depth mm	Rim	Out Diam. mm	Section Width mm	Static Loaded mm+2.5%	Rolling Circumfer mm+2.5%	Inflation Pressure Kpa	Load Capacity (kg) Speed Km/h Static 50	Model No.
620/75R26	AG RS	166A8/166B	TL	45	20	1605	641	722	4778	320	12190 5300	TC77052001
750/65R26	AG RS	158A8/158B	TL	46	25	1600	761	710	4761	160	9775 4250	TC77052002
	AG RS	166A8/166B								240	12190 5300	TC77052003
	AG RS	172A8/172B								320	14490 6300	TC77052004
540/65R28	AG-R	142D/145A8	TL	48	16	1424	533	631	4257	160	6670 2650	TC77052005
650/75R32	AG RS	172A8/172B	TL	48	20	1796	658	810	5362	320	14490 6300	TC77052006
*650/75R32	AG RS	180A8/180B	TL	48	20	1796	658	810	5362	500	18400 8000	TC77052007
800/65R32 (30.5L R32)	AG-R	172A8/172B	TL	57	25	1833	797	820	5460	240	14490	TC77052008
	AG-R	172A8/178B								320	17250	TC77052009
520/70R38	AG-R	150A8/150B	TL	48	16	1743	529	787	5238	160	7705 3350	TC77052010
520/85R38(20.8R38)	AG-R	155A8/155B	TL	51.00	18.00	1863	530	841	5589	160	8910 3875	TC77052011
	AG-R	175A8/175B								360	15865 6900	TC77052012
	AG-R	155A8/158B								160	8910 3875	TC77052013
580/70R38	AG-R	170A8/170B	TL	51	18	1822	580	811	5465	280	13800 6000	TC77052014
710/70R38	AG-R	166A8/166B	TL	58	23	1950	741	863	5837	160	12190 5300	TC77052015
650/85R38	AG-R	173A8/176B	TL	60.00	20.00	2072	666	935	6192	240	16330 7100	TC77052016
650/65R38	AG-R	157D/160A8	TL	51	20	1812	653	815	5439	160	10350 4125	TC77052017
	AG-R	163D/166A8								240	12190 4875	TC77052018
650/65R42	AG-R	158D/161A8	TL	51	20	1921	651	865	5775	160	10640 4250	TC77052019
	AG-R	165D/168A8								240	12880 5150	TC77052020
460/85R42(18.4R42)	AG-R	151A8/151B	TL	50	16.00	1865	473	844	5611	160	7935 3450	TC77052021
520/85R42(20.8R42)	AG-R	157A8/157B	TL	51.00	18.00	1958	530	875	5884	160	9490 4125	TC77052022
	AG-R	162A8/162B								240	10925 4750	TC77052023
	AG-R	165A8/165B								360	11845 5150	TC77052024
580/70R42	AG-R	158A8/158B	TL	51	18	1780	575	835	5626	160	9775 4250	TC77052025
	AG-R	176A8/176B								320	16330 7100	TC77052026
620/70R42	AG-R	160A8/160B	TL	52	20	1917	626	841	5762	160	10350 4500	TC77052027
	AG-R	166A8/166B								240	12190 5300	TC77052028
710/70R42	AG-R	173A8/173B	TL	58	23	2079	743	937	6234	240	14950 6500	TC77052029
	AG-R	176A8/176B								280	16330 7100	TC77052030
710/75R42	AG-R	175D/178A8	TL	62	23	2127	728	961	6356	240	17250 7500	TC77052031
380/90R46	AG-R	149A8/149B	TL	47.00	12.00	1868	391	868	5633	240	7475 3250	TC77052032
	AG-R	159A8/159B								400	10060 4375	TC77052033
VF380/90R46	AG-R	173B/173D	TL	47.00	13.00	1868	395	868	5633	400	6500	TC77052034
480/80R46(18.4R46)	AG-R	158A8/158B	TL	49.00	16.00	1971	490	905	5936	240	9775 4250	TC77052035
520/85R46(20.8R46)	AG-R	158A8/152B	TL	51.00	18.00	2062	535	921	6205	160	9775 4250	TC77052036
*380/90R50	AG-R	158D/161A8	TL	44	DW12, DW13	1948	380	924	935	360	9775 4460	TC77052037
IF800/65R32	AG-R	181B/181D	TL	57	28	1833	797	820	5460	320	18975 8250	TC77052038
*IF900/60R32CFO	AG-R	185B/185D	TL	56	31	1910	891	855	5688	320	21275 9250	TC77052039
*IF1050/50R32	AG RS	185B/185D	TL	40	36	1863	1038	833	5686	240	- 9250	TC77052040
*IF1250/50R32 CFO	AG-R	201B	TL	63	44	2063	1247			240	12325	TC77052041
IF710/75R34 CFO	AG-R	178B/178D	TL	48	DW25	1912	736			240	21275 7500	TC77052042
*IF800/70R38	AG-R	184B/184D	TL	60	27	2085	805	927	6190	240	9000	TC77052043
*IF900/60R38 CFO	AG-R	184B/184D	TL	63	31	2054	885			240	20700 9000	TC77052044
*VF900/60R38	PADDLE-II	193A8/193B	TL	100.00	30.00	2056	870	-	-	280	11500	TC77052045
VF600/60R28	AgriKing	157D	TL	48	DW20B	585	1426	-	-	160	9480 4125	TC77052046
VF540/65R30	AgriKing	158D	TL	48	DW20B	-	-	-	-	160	8910 3875	TC77052047
VF600/60R30	AgriKing	158D	TL	48	DW20B	580	1482	-	-	160	9780 4250	TC77052048
VF710/60R38	AgriKing	171D	TL	58	DW25B	-	-	-	-	160	15150 6150	TC77052049
VF650/65R42	AgriKing	174D	TL	58	DW23B	658	1912	-	-	200	15400 6700	TC77052050
VF710/60R42	AgriKing	173D	TL	58	DW25B	688	1896	-	-	160	14950 6500	TC77052051
VF380/90R54	AG-R	176D	TL	44	DW12, DW13	2038	391			440	16330 7100	TC77052052
540/65R30	PADDLE-II	143D/146A8	TL	80.00	16.00	1511	535	-	-	160	6900 2725	TC77052053
650/65R42	PADDLE-II	158D/161A8	TL	80.00	20.00	1965	633	-	-	160	10640 4250	TC77052054



## Combine R-1W Bias

Size	P.R.
18.4-30	10,12,14
18.4-34	10,12,14
18.4-38	12,16,20
18.4-42	12,16
20.8-38	12,14,20
20.8-42	12,16,18,20
21.5L-16.1	14
23.1-26	12,14,16,18
23.1-30	10,12
24.5-32	12,16,18
28L-26	16,18
29.5-25	20
30.5L-32	12,14,16,18
800/65-32	20
900/60-32	20



## Benefits and Main features

- Lower soil displacement under high loads across all working speeds
- Developed with wide grooves for wet & dry applications
- The flatter the crown, the better the performance under all conditions
- Suited for all flotation applications such as haul out bins, headers & chaser bins

## IMPROVED FLEX HOWIT COMPARES

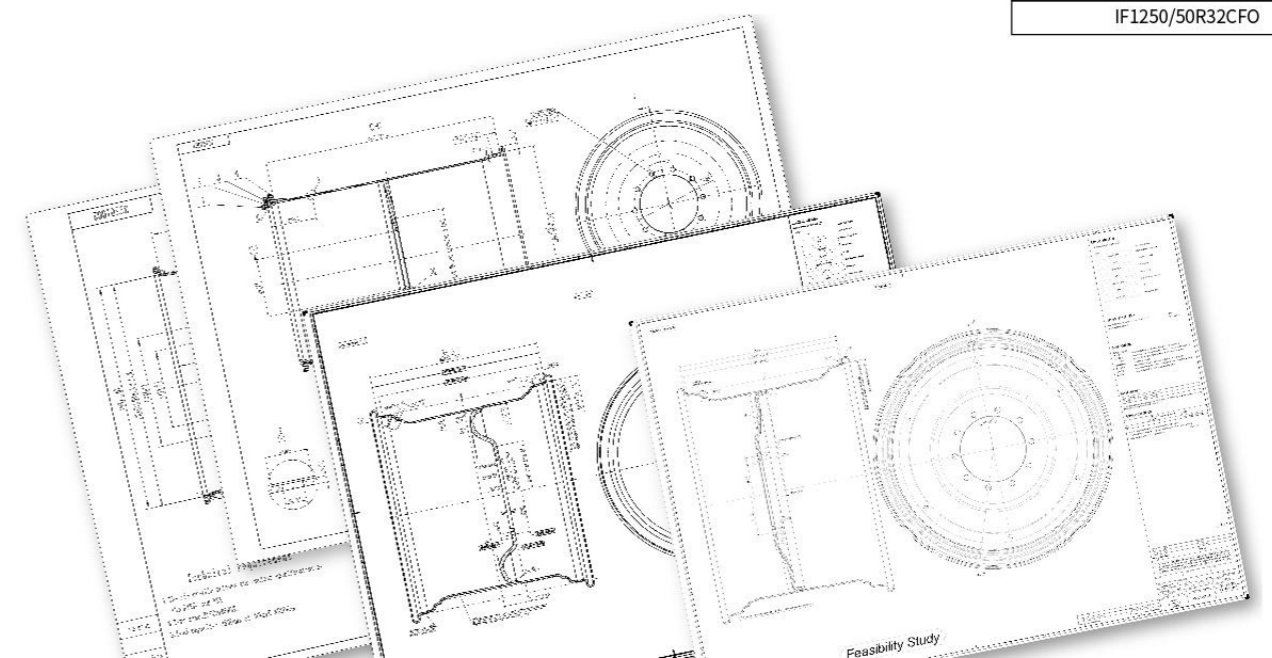
BRAND	SIZE	LOAD/SPEED
PREMIUM EUROPEAN BRAND	900/60R32	176A8/176B
PREMIUM INDIAN BRAND	IF900/60R32	185A8/182B
<b>TIANLI</b>	<b>IF900/60R32</b>	<b>185B/185D</b>

## WHY CHOOSE TIANLIIMPROVED FLEX?

- Higher Loads at Lower Pressure
- Extra Paddock Protection
- Faster Speeds at Higher Loads
- Upto 2100kg more load compared to regular AG tyre

## ALSO AVAILABLE IN

IF1050/50R32
IF900/60R38CFO
IF800/65R32
IF800/70R38
IF710/75R34CFO
IF1250/50R32CFO





AG-R													
Tyre Size	Pattern	Load/Speed Index	TT/TL	Tread Depth mm	Rim	Out Diam. mm	Section Width mm	Static Loaded mm+2.5%	Rolling Circumfer mm+2.5%	Inflation Pressure Kpa	Load Capacity (kg) Static	Speed Km/h 50	Model No.
620/75R26	AGRS	166A8/166B	TL	45	20	1605	641	722	4778	320	12190	5300	TC77052001
750/65R26	AGRS	158A8/158B	TL	46	25	1600	761	710	4761	160	9775	4250	TC77052002
	AGRS	166A8/166B								240	12190	5300	TC77052003
	AGRS	172A8/172B								320	14490	6300	TC77052004
*650/75R32	AGRS	180A8/180B	TL	48	20	1796	658	810	5362	500	18400	8000	TC77052007
800/65R32 (30.51R32)	AG-R	172A8/172B	TL	57	25	1833	797	820	5460	240	14490		TC77052008
	AG-R	172A8/178B								320	17250		TC77052009
520/85R38(20.8R38)	AG-R	155A8/155B	TL	51.00	18.00	1863	530	841	5589	160	8910	3875	TC77052011
	AG-R	175A8/175B								360	15865	6900	TC77052012
580/70R38	AG-R	155A8/158B	TL	51	18	1822	580	811	5465	160	8910	3875	TC77052013
	AG-R	170A8/170B								280	13800	6000	TC77052014
710/70R38	AG-R	166A8/166B	TL	58	23	1950	741	863	5837	160	12190	5300	TC77052015
650/85R38	AG-R	173A8/176B	TL	60.00	20.00	2072	666	935	6192	240	16330	7100	TC77052016
650/65R38	AG-R	157D/160A8	TL	51	20	1812	653	815	5439	160	10350	4125	TC77052017
	AG-R	163D/166A8								240	12190	4875	TC77052018
650/65R42	AG-R	158D/161A8	TL	51	20	1921	651	865	5775	160	10640	4250	TC77052019
	AG-R	165D/168A8								240	12880	5150	TC77052020
460/85R42(18.4R42)	AG-R	151A8/151B	TL	50	16.00	1865	473	844	5611	160	7935	3450	TC77052021
	AG-R	157A8/157B								160	9490	4125	TC77052022
520/85R42(20.8R42)	AG-R	162A8/162B	TL	51.00	18.00	1958	530	875	5884	240	10925	4750	TC77052023
	AG-R	165A8/165B								360	11845	5150	TC77052024
580/70R42	AG-R	158A8/158B	TL	51	18	1780	575	835	5626	160	9775	4250	TC77052025
	AG-R	176A8/176B								320	16330	7100	TC77052026
620/70R42	AG-R	160A8/160B	TL	52	20	1917	626	841	5762	160	10350	4500	TC77052027
	AG-R	166A8/166B								240	12190	5300	TC77052028
710/70R42	AG-R	173A8/173B	TL	58	23	2079	743	937	6234	240	14950	6500	TC77052029
	AG-R	176A8/176B								280	16330	7100	TC77052030
710/75R42	AG-R	175D/178A8	TL	62	23	2127	728	961	6356	240	17250	7500	TC77052031
IF800/65R32	AG-R	181B/181D	TL	57	28	1833	797	820	5460	320	18975	8250	TC77052038
*IF900/60R32CFO	AG-R	185B/185D	TL	56	31	1910	891	855	5688	320	21275	9250	TC77052039
*IF1050/50R32	AGRS	185B/185D	TL	40	36	1863	1038	833	5686	240	-	9250	TC77052040
*IF1250/50R32CFO	AG-R	201B	TL	63	44	2063	1247			240		12325	TC77052041
IF710/75R34CFO	AG-R	178B/178D	TL	48	DW25	1912	736			240	21275	7500	TC77052042
*IF800/70R38	AG-R	184B/184D	TL	60	27	2085	805	927	6190	240		9000	TC77052043
*IF900/60R38CFO	AG-R	184B/184D	TL	63	31	2054	885			240	20700	9000	TC77052044
VF710/60R38	AgriKing	171D	TL	58	DW25B	-	-	-	-	160	15150	6150	TC77052049
VF650/65R42	AgriKing	174D	TL	58	DW23B	658	1912	-	-	200	15400	6700	TC77052050
VF710/60R42	AgriKing	173D	TL	58	DW25B	688	1896	-	-	160	14950	6500	TC77052051
VF380/90R54	AG-R	176D	TL	44	DW12, DW13	2038				440	16330	7100	TC77052052



R-3													
Tire													
Size	Pattern	Max Speed	Type	S.W.	O.D.	Load Index	Max Pressure	Rim Size	Offset/ET	Thickness Rim	Disc	Model no.	
800/65R32	R-3	65km/h	TL	797mm	1853mm	185A8/181D	400kPa	DW27x32	38/0/-50/-74/-100	7	16	TWC7705107	

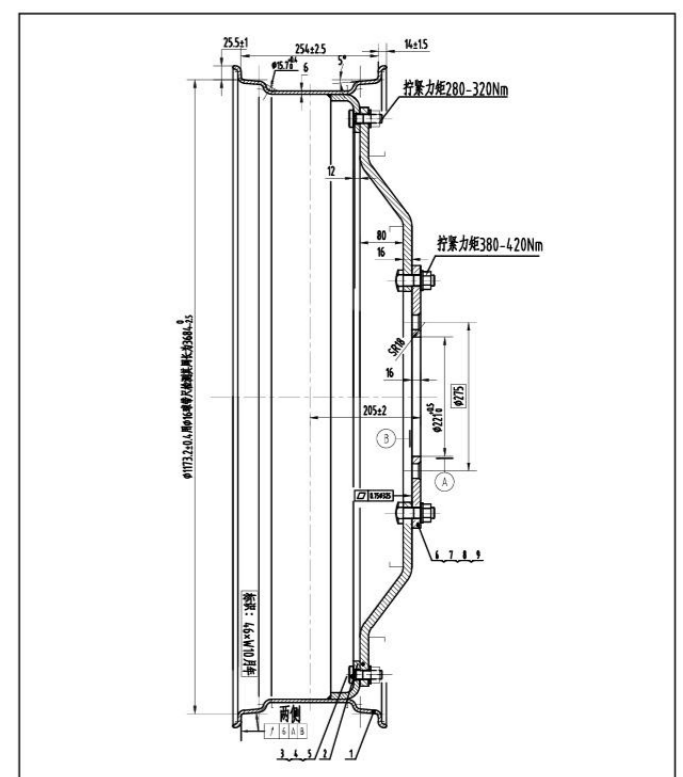
**BUILD TO HANDLE TOUGH CONDITIONS**  
Applications: Combines, Grain Bins, Spreaders, Sugar Cane, Trailers, T



Tyre Size	Load/Speed Index	TT/TL
230/95R32(9.5R32)	128A8/128B	TL
270/95R32(11.2R32)	136A8/136B	TL
230/95R36(9.5R36)	128A8/128B	TL
270/95R36(11.2R36)	137A8/137B	TL
270/95R38(11.2R38)	140A8/140B	TL
230/95R40(9.5R40)	135A8/135B	TL
230/95R42(9.5R42)	133A8/133B	TL
270/95R42(11.2R42)	140A8/140B	TL
320/80R42	141A8/141B	TL
230/95R44(9.5R44)	134A8/134B	TL
270/95R44(11.2R44)	142A8/142B	TL
270/95R46(11.2R46)	143A8/143B	TL
300/95R46(12.4R46)	148A8/148B	TL
320/90R46(12.4R46)	148A8/148B	TL
340/85R46	150A8/150B	TL
270/95R48(11.2R48)	144A8/144B	TL
340/85R48	152A8/152B	TL
300/95R52(12.4R52)	151A8/151B	TL
270/95R54(11.2R54)	146D/149A8	TL
540/65R30	143D/146A8	TL
*VF900/60R38	193A8/193B	TL
650/65R42	158D/161A8	TL

## Benefits and Main features

- Row crop tires with rounded shoulders for every kind of cultivation, harvesting and spraying operation.
- Minimum damage to crops even in narrow spaced plantations
- Strong radial casing for optimum ground pressure distribution and low ground compaction lowers damage to soil and increases crop yield
- A wide offer of wheels from 24" to 54" in rim diameters, with potential offsets enables any required track to be achieved. Either bare/blank rim or center/disc is also available.





## R-1 Irrigation

Tyre				Wheel (Galvanized)											Model No.	
Tyre Size	Pattern	Type	Ply Rating	Unloaded Inflated OD. x SW.	Max. Load (kg)	Pressure	Speed	Rim Size	Stud Holes No.	Stud Holes Dia.	PC Dia.	Center Hole Dia.	Offset/ET.	Thickness Rim		Thickness Disc
11.2-24	R-1 Irrigation	TT/TL	6	1090x284mm	1060	1.8bar	30kmh	W10x24	8	Ø27	Ø275	Ø221	0/30/35/-70	4	8	TWI7752301
13.6-24	R-1 Irrigation	TT/TL	8	1210x345mm	1500	1.9bar	30 kmh	W12x24	8	Ø17	Ø203.2	Ø152.4	0/87.50/-70	4	8	TWI7752302
14.9-24	R-1 Irrigation	TT/TL	8	1245x378mm	1550	1.4bar	30 km/h	W13x24	6/8	Ø21.5/Ø27	Ø205/Ø275	Ø161/Ø221	0//29/-13/-74	4	8	TWI7752303
16.9-24	R-1 Irrigation	TT/TL	8	1331x430mm	1800	1.8bar	40 km/h	W15x24	6/8	Ø21.5/Ø27	Ø205/Ø275	Ø161/Ø221	0//29/-13/-74	4	8	TWI7752304
11.2-38	R-1 Irrigation	TT/TL	6	1445x284mm	1285	1.8bar	30km/h	W10x38	8	Ø17	Ø203.2	Ø152.4	62/120/-70	4	8	TWI7752305

## Benefits and features

- Multistar irrigation tire tread pattern has been designed to guarantee low soil compaction thus protecting the soil and enhancing fertility.
- Galvanized wheels in various of offsets, with plenty of daily stocks
- All tires TT type are fitting with butyl inner tubes



## R-1

Tire				Wheel											Model No.	
Size	Pattern	P.R.	Type	S.W.	O.D.	Load Index	Max Pressure	Rim Size	Stud Holes No.	Stud Holes Dia.	PC Dia.	Center Hole Dia.	Offset/ET.	Thickness Rim		Thickness Disc
30.5L-32Dual	R-1	18	TL	775mm	1850mm	170A6	240kPa	DW27x32	10h+20h					6	24	TWD7705110
IF800/65R32 Dual	R-1		TL	797mm	1833mm	181B/181D	320kPa	DW27x32	10h+20h					6	24	TWD7705111
900/60-32 Single	R-1	20	TL	900mm	1900mm	185A8	320kPa	DW31x32	10h	Ø23	Ø335	Ø281	0/41.5mm	7	16	TWD7705112

## ALSO AVAILABLE

Tire	Pattern	P.R.
23.1-26	R-1/R-3	12,16
28L-26	R-1/R-3	16,18
600/50-22.5	TRC-03	16,20
425/65R22.5	TRAILER	20
445/50R22.5	TRAILER	20
455/40R22.5	TRAILER	20
21.5L-16.1	I-1	10,14
12.5L-15	I-1	12
11L-15	I-1	12
9.5L-15	I-1	10



# Sugarcane Harvester



R-1		IMP-01		TRC-03		MPT-04										
Tyre								Wheel								
Tyre Size	Pattern	Type	Ply Rating	Unloaded inflated OD. xSW.	Max. Load	Pres sure	Speed	Rim Size	No.	Dia.	PC Dia.	Center Hole Dia.	Offset/ET.	Thickness Rim	Disc	ModelNo.
18-15.5	MPT-04	TL	10	980x450mm	4185	3.5bar	40km/h	13.00x15.5	6	Ø21.5	Ø205	Ø161	0/-15	5	10	TWS77523011
10.5/65-16	IMP-01	TL	14	755x274mm	1900	7.1bar	40km/h	w8X16	6	Ø21.5	Ø205	Ø161	0	5	10	TWS77523012
16.9-28	R-1	TT	10	1435x430mm	2380	2.0bar	40km/h	W15Lx28	6/8	Ø21.5	Ø205/Ø275	Ø161/Ø221	0/50	4	10	TWS77523013
13.0/65-18	IMP-01	TL	14	890x336mm	2575	5.8bar	40km/h	11.00x18	6/8	Ø21.5	Ø205/Ø275	Ø161/Ø221	0/50	5	10	TWS77523014
13.0/65-18	IMP-01	TL	16	890x336mm	2800	6.7bar	40km/h	11.00x18	6/8	Ø21.5	Ø205/Ø275	Ø161/Ø221	0/50	5	10	TWS77523015
23.1-26	R-1	TT	12	1585x587mm	3650	1.7bar	30km/h	DW20x26	8/10	Ø27	Ø275/Ø335	Ø221/Ø281	0/-50	6	12	TWS77523016
23.1-26	R-1	TT	16	1585x587mm	4375	2.3bar	30km/h	DW20x26	8/10	Ø27	Ø275/Ø335	Ø221/Ø281	0/-50	6	12	TWS77523017
23.1-26	R-3	TL	12	1500x595mm	5150	2.0bar	30km/h	DW20x26	8/10	Ø27	Ø275/Ø335	Ø221/Ø281	0/-50	6	12	TWS77523018
550/45-22.5	TRC-03	TL	16	1070x550mm	4375	2.8bar	40km/h	16.00x22.5	8/10	Ø27	Ø275/Ø335	Ø221/Ø281	0/-30/-50	6	12	TWS77523019
600/50-22.5	TRC-03	TL	16	1170x600mm	5150	2.6bar	40km/h	20.00x22.5	8/10	Ø27	Ø275/Ø335	Ø221/Ø281	0/-50	7	14	TWS77523020



# Industrial Vehicles



- Dumpers & Dump trucks 27
- Loaders 28
- Excavators 29
- Skid steers 30
- Backhoe loaders and Telehandlers 31
- Mobile cranes 32
- Conveyors 33



AGRO GRIP	RIDE KING	AR835	FL300	FR/FR-1	AR833	LBI301	GLF02
<b>TIRE RADIAL</b>							
Tyre size	Load/Speed Index	Pattern					
500/50R17	149D,145D,147D	Agro Grip,FR,AR835					
525/65R20.5	20PR	GLF02					
24R20.5	18PR	GLF02					
29.5R25	**	GLF02					
500/45R22.5	146D,148D	Ride King,AR835					
500/60R22.5	155D	Agro Grip,FR,FL300					
560/45R22.5	152D	Agro Grip,Ride King,FR,AR833,AR835,FL300					
560/60R22.5	161D	Agro Grip,Ride King,FR,AR833,AR835,FL300					
*560/60R22.5	164D	Agro Grip,					
600/50R22.5	159D	Agro Grip,FR,AR833,LBI301					
*600/50R22.5	167D	Agro Grip,					
600/55R22.5	162D	Agro Grip,					
620/40R22.5	148D,154D	AR835					
650/50R22.5	163D	Agro Grip,					
710/40R22.5	161D	Ride King					
710/45R22.5	165D	Agro Grip,FR,AR833					
*710/45R22.5	165D	Agro Grip,					
600/55R26.5	165D,173D	Agro Grip,Ride King,FR,AR833,AR835,FL300					
620/55R26.5	166D	Agro Grip,					
650/55R26.5	169D,177D	Agro Grip,Ride King,AR833,AR835,FL300					
*650/55R26.5	178D	Agro Grip,					
*710/50R26.5	170D	Agro Grip,FR,AR833,LBI301					
750/45R26.5	170D	Agro Grip,					
*800/45R26.5	174D	Ride King,AR835					
*600/60R30.5	173D,179D	Agro Grip,					
*650/65R30.5	176D	Agro Grip,LBI301					
*710/50R30.5	176D	Agro Grip,FL300					
*750/60R30.5	181D	Agro Grip,Ride King,AR833					
*850/50R30.5	182D	Agro Grip,AR835,LBI301					



MPT-01	MPT-02	
<b>TIRE DIAGONAL</b>		
Tyre size	P.R.	Pattern
7.00-12	10	MPT-01
26x12-12	10	MPT-01
10.0/75-15.3	10	MPT-01/MPT-02
11.5/80-15.3	10	MPT-01/MPT-02
400/60-15.5	14	MPT-01
31x15.50-15	8	MPT-01
31x15.50-15	12	MPT-01
16.5L-16.1	10	MPT-01
35x19-16.1	12	MPT-01
10.5-18	12	MPT-02
12.5-18	12	MPT-02
16/70-20	14	MPT-01
38x18-20	12	MPT-01
12.5-20	12	MPT-02
14.5-20	12	MPT-02
15.5/80-24	10	MPT-01
15.5/80-24	16	MPT-01

<b>TIRE RADIAL</b>		
31x15.50R15	122B	MPT-01
33x15.50R15	126B	MPT-01
425/55R17	134D	MPT-01
500/50R17	145D	MPT-01
18R19.5	173A8/180A2	MPT-02
18R22.5	175A8/182A2	MPT-02
445/65R22.5	169F	MPT-02



TU201	TU202	TUL300	TUL301	TUL302	TUL305	TUL500	TUL505
<b>Tyre Size</b>		<b>Pattern</b>					
15.5R25		TUL300,TU202					
17.5R25		TUL300,TUL302,TU201,TU202					
20.5R25		TUL300,TUL302,TUL500,TU201,TU202					
23.5R25		TUL300,TUL302,TUL500,TUL505,TU201,TU202					
26.5R25		TUL300,TUL302,TUL500,TUL505					
29.5R25		TUL300,TUL302,TUL505					
650/65R25		TUL305,TU202					
750/65R25		TUL307,TU202					
850/65R25		TUL306					
29.5R29		TUL308					
35/65R33		TUL309					
45/65R45		TUL310					

Bias OTR tires are also available with Multistar brand



# Excavators

## Excavator tires - wide range



ME-20		FT-A		GLR15	
Tire size	P.R.	ME-20	FT-A	GLR15	
8.25-20	14	*			
9.00-20	14	*			
10.00-20	16	*			
11.00-20	16	*			
500/45-20SB	18	*	*		
500/60-22.5	12,16		*		
600/40-22.5SB	18		*		
315/80R22.5				*	
335/80R18				*	
335/80R20				*	
365/80R20				*	
405/80R18				*	
405/70R20				*	
405/70R24				*	
15.5R25				*	

SB. Steel Belt

### Variation in load capacity with speed dependence - FT-A 500/45-20SB, 500/60-22.5, 600/40-22.5SB

Speed (mph)	0	6	9	12	16	19	22	25	28	31
Load capacity	65%	40%	33%	26%	19%	12%	5%	0	-5%	-10%



# Skid steers



	SKS-1	SKS-2	SKS-3	SKS-4	SKS-5	SKS-6	SKS-7	SKS-8	SKS-9	
Bias tire size										Rim size
18x8.50-10NHS	8	*								10x7.00
23x8.50-12	8	*				*				12x7.00
10.0/75-15.3	12	*								15.3x9.00
27x8.50-15	8,10	*				*				15x7.00
27x10.50-15	8	*				*				15x8LB
31x15.50-15	10	*								15x13LB
11L-16	12	*								16x8LB
10-16.5	10	*	*	*	*	*	*	*	*	16.5x8.25
12-16.5	12	*	*	*	*	*	*	*	*	16.5x9.75
33x15.50-16.5	12									16.5x13.00
14-17.5	14	*								17.5x10.5
15-19.5	14	*								19.5x11.75
Radial tire size										
10R16.5 (265/70R16.5)		*							*	16.5x8.25
12R16.5 (305/70R16.5)		*							*	16.5x9.75

### Benefits and main features

- Severe service skid-steer for packed soil, or hard surface applications.
- Advanced compound resists tearing and punctures.
- Reinforced heavy duty sidewall with curb and rib guard that provides extra protection against rim and sidewall damage.
- Reinforced for superior tread stability and greater penetration resistance.
- All-steel construction provides superior puncture resistance and longer life.
- Rim guard

### POPULAR RUBBER TRACK SIZES for Excavators and Skid Steers

180x72x31,180x72x32,180x72x33,180x72x34,180x72x35,180x72x36,180x72x37,180x72x38,180x72x39,180x72x40,180x72x41,180x72x42,180x72x43,180x72x44,180x72x45  
 230x48x60,230x48x62,230x48x63,230x48x64,230x48x66,230x48x68,230x48x70,230x48x72  
 230x72x37,230x72x39,230x72x40,230x72x41,230x72x42,230x72x43,230x72x44,230x72x45,230x72x46,230x72x47,230x72x48,230x72x49,230x72x50,230x72x52,230x72x54  
 230x72x56  
 300x52.5x70,300x52.5x72,300x52.5x74,300x52.5x76,300x52.5x78,300x52.5x80,300x52.5x82,300x52.5x84,300x52.5x86,300x52.5x88,300x52.5x90  
 350x52.8x84,350x52.8x86,350x52.8x88,350x52.8x90  
 400x72.5x68,400x72.5x70,400x72.5x72,400x72.5x74,400x72.5x76  
 450x81x74,450x81x76,450x81x78







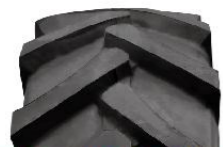
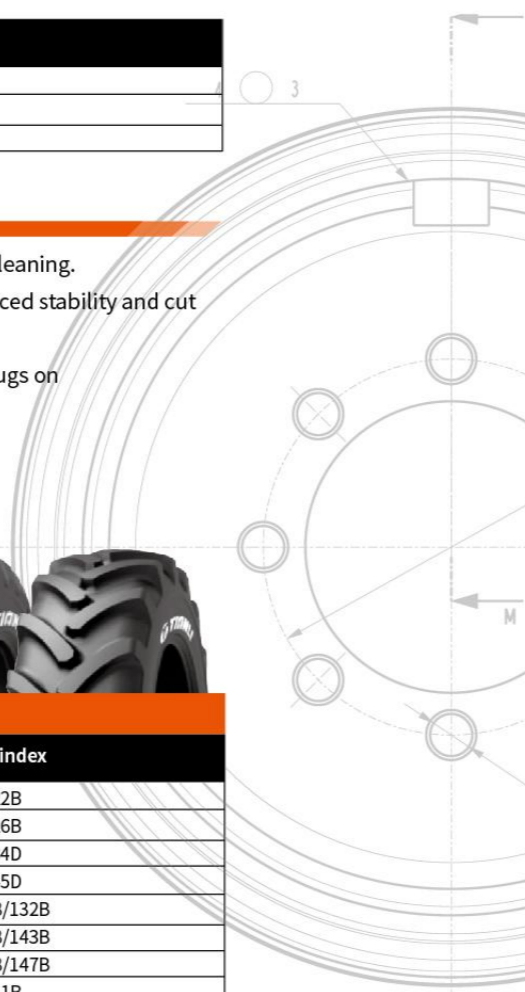
R-4 IND	P.R
10.5/80-18	12
12.5/80-18	12,14
12.5/80-20	12
400/70-20	14,16
14.9-24	12
16.9-24	12
17.5L-24	12
19.5L-24	12
21L-24	12
18.4-24	12
18.4-26	12,16
480/80-26	14
16.9-28	12,14
440/80-28	14
16.9-30	



F-3	P.R
9.5L-15	8,12
11L-15	10,12
11L-16	10,12

### Benefits and main Features

- Deep tread for excellent traction and self-cleaning.
- Robust and reinforced shoulders for advanced stability and cut resistance
- Special bead protection and strong tread lugs on radial tires for severe applications.
- Durable tire



### Tire bias (MPT-01)

tire size
26x12-12
29x12.50-15
31x15.50-15
400/60-15.5
16.5L-16.1
12.5/80-18 (340/80-18)
12.5/80-20 (340/80-20)
14.5-20 (380/75-20)
16.0/70-20(405/70-20)
16.0/70-24(405/70-24)
15.5/80-24(400/80-24)
17.5L-24(460/70-24)
19.5L-24(500/70-24)
18.4-26(480/80-26)
16.9-28(440/80-28)



### Tire radial (BRS/R100/MS)

Bias tire size	Load index
31x15.50R15	122B
33x15.50R15	126B
425/55R17	134D
500/50R17	145D
280/80R18(10.5/80R18)	132A8/132B
340/80R18(12.5/80R18)	143A8/143B
400/70R18	147A8/147B
405/70R18(16/70R18)	141B
280/80R20(10.5/80R20)	133A8/133B
340/80R20(12.5/80R20)	144A8/144B
380/75R20(14.5R20)	148A8/148B
*400/70R20(16.0R20)	149A8/149B
405/70R20(16/70R20)	149A8/149B
400/70R24(16.0R24)	152A8/152B
440/80R24(16.9R24)	161A8/161B
460/70R24(17.5LR24)	159A8/159B
500/70R24(19.5LR24)	164A8/164B
480/80R26(18.4R26)	160A8/160B
440/80R28(16.9R28)	163AB/163B



Size	TT/TL	Rim	Pattern	TRA Code	LoadSpeed Index	Star Rating	Tread Depth (mm/32ND)	Overall Diameter (mm/inch)	Section Width (mm/inch)	Inflation Pressure (KPA/PSI)	Loading Capacity (Kg/Lbs)	Speed (Km/mph)
385/95R25 (14.00R25)	TL	25-10.00/1.5	TUE100II	E-2	170F/170G	★★★	24	1369	379	900	6000	80/90
							30	53.9	14.9	131	13200	50/60
445/95R25 (16.00R25)	TL	25-11.25/2.0	TUE100II	E-2	174F/177F	★★★	26	1481	453	900	6700/7300	80
							33	58.3	17.1	131	14800/16100	50
505/95R25 (18.00R25)	TL	25-13.00/2.5	TUE101	E-2	186F	★★★	26	1595	510	900	9500	80
							33	62.8	20.1	131	20900	50

### Also available

Tire size	GLN01	GLB07	GLB05	GLR58	B05N	BGZN	Rim size
385/95R24(14.00R24)	*	*	*		*	*	24-10.00/1.5
385/95R25(14.00R25)	*	*	*		*	*	25-10.00/1.5
445/95R25(16.00R25)	*	*	*		*	*	25-11.25/2.0
445/80R25(17.5R25)			*		*	*	25-14.00/2.0
505/95R25(18.00R25)	*		*		*	*	25-13.00/2.5
525/80R25(20.5R25)			*		*	*	25-17.00/2.0
605/80R25(23.5R25)				*		*	25-19.50/2.5

### Benefits and main features of TIANLI brand Crane tires

- "All Steel Radial Construction", optimal for high speed crane applications up to 80 km/h.
- Special crane compound, increased durability and wear life combined with light-weight help offer shorter braking distance, low-noise operation, and longer tire life.
- Unique irregular wear pattern guarantees greater operator comfort, and lower rolling resistance performance to reduce fuel consumption.
- Homologated as M+S and meets requirements for winter conditions.



GLB05 GLB07 GLN01 GLR35 GLR58 E2 B05N BGZN C7

## MULTISTAR IF Profile Section for Crane wheels in 3-pieces type

### Key Features

#### Reduced tyre slippage

-Greater contact and friction between the tyre and integral flange actively reduces the need of knurling in the tyre bead area.

#### Less tyre chafing

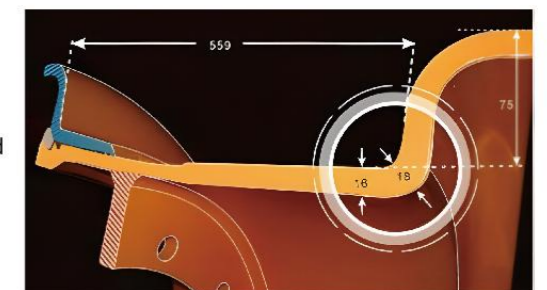
-Since there is no separate loose flange, the interface between the tyre bead and wheel rim is greatly improved, reducing potential tyre damage.

#### Better air seal

-The integral flange increases tyre bead to rim contact and the fully machined finish creates a more positive air seal for quicker more efficient inflation.

#### Quicker tyre fitting

-With fewer loose parts, tyre fitting and removal is faster and safer.



# Conveyor Tire Assembly and Conveyor Belt

Tire size	PR	Pattern	Brand	LI/SS
255/70R22.5	16PR	Steer	Premium brand	140/137L
11R22.6	16PR	Steer	Premium brand	148/145M

Rim size	Specification	Material	Surface	Brand
22.5x8.25	10H 285.75/222 ET.168	steel	Powder topcoat White	MULTISTAR



Multistar offers a broad range of high-performing conveyor belts for applications in the mining, cement and steel industries, as well as for other applications such as ports, power and heating plants, quarries and the chemical industry.

# Mining & Earthmoving

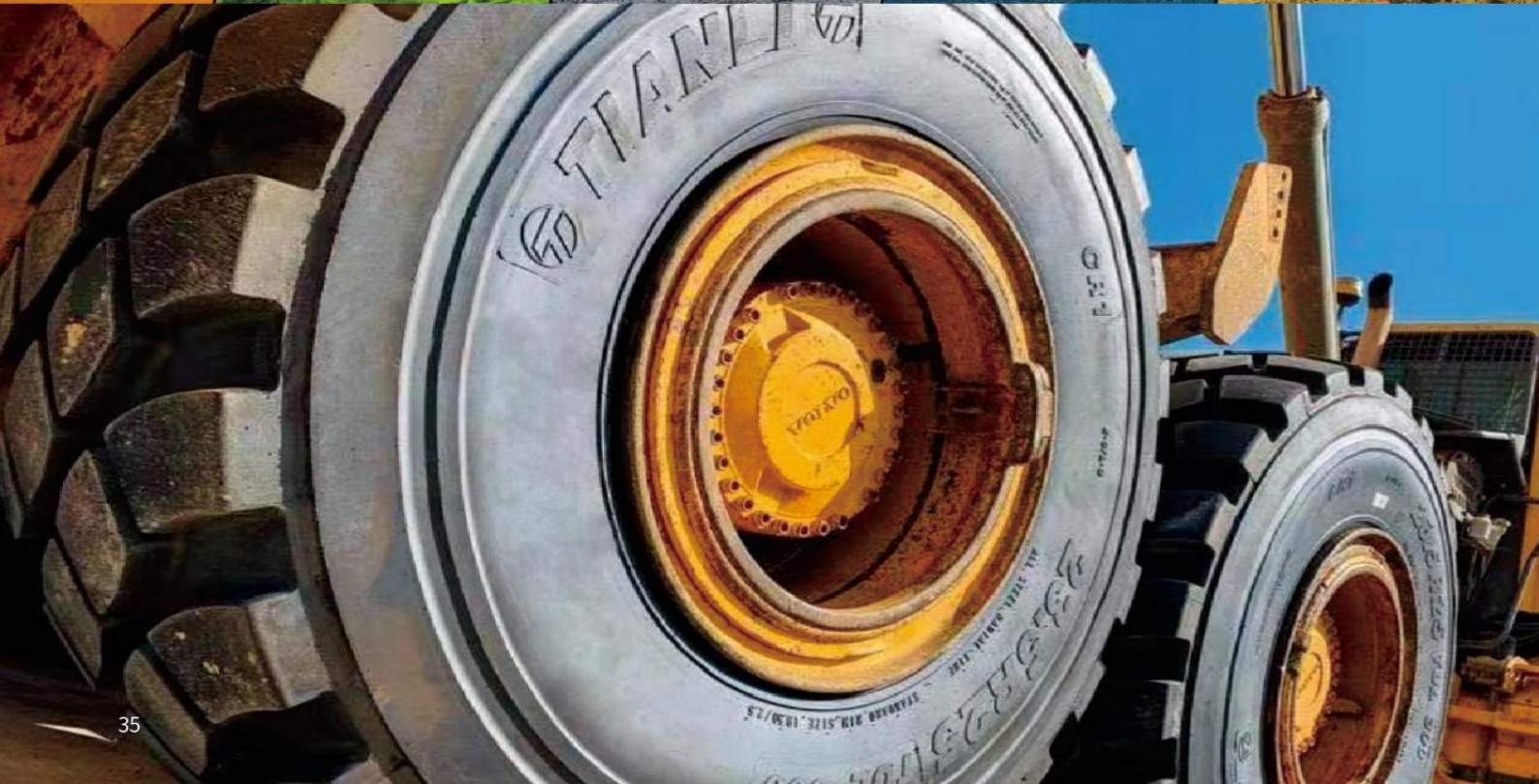


- Loader and grader 37
- Scrapers 38
- Rigid Dump Trucks 39
- Articulated Dump Trucks 40
- Underground mine 41

# TIANLI TIRES

- One stop supply of more **2000** SKU+ off highway tires
- More than **40** years experience in research and development.
- OEM fitment by many international machines
- Listed **No. 8** in global tire manufacturer ranking

Mining & Earthmoving



全钢工程机械子午线轮胎技术参数

序号	轮胎规格	花纹名称	TRA代号	花纹深度mm	负载速度指数	星级	配方型号	轮辋	外直径	断面宽	气压 kpa	负载kg	速度 km/h	TKPH值		
NO	Type Size	Pattern	TRA Code	Tread Depth	Load Speed Index	star	Formula Type	Rim	OD/mm	SW/mm	pressure	Load	Speed	HR2	NOR	CR1
1	12.00R24	TUL580	L-5S	55	175/A2	**	CR1, CR2	8.5	1277	328	800	6900	10			
2	14.00R24	TUL580	L-5S	63.5	186/A2	**	CR1, CR2	10.00	1418	372	800	9500	10			
3	14.00R25(14.00R24)	TUE303	E-3	27	171/B	***	NOR, CR1, CR2	10.00	1367	376	800	6150	50			
4	14.00R25(14.00R24)	TUE304	E-3	27	170/B	***	NOR, CR1, CR2	10.00	1350	365	800	6050	50			
5	14.00R25	TUE401	E-4	38	171/B	***	NOR, CR1, CR2	10.00	1406	384	800	6150	50			
6	15.5R25	TUL300	E3/L-3	24.4	152/B	*	CR1	12.00	1275	405	375	3550	50			
					169/A2	*	CR1				500	5800	10			
7	16.00R25(445/95R25)	TUE100	E-1	25.4	177/B	**	NOR, CR1	11.25	1475	454	700	7300	50			
					174/F	**	NOR		1475	454	900	6700	80			
8	16.00R25	TUE303	E-3	32	177/B	**	NOR, CR1, CR2	11.25	1475	432	700	7300	50			
		TUE401	B-4	42	177/B	**	NOR, CR1, CR2				700	7300	50			
		TUL300	E3/L-3	27	167/B	**	CR1		1347	449	525	5450	50	143	112	
					182/A2	**	CR1				650	8500	10			
		TUL302	E3/L-3	26	167/B	**	CR1				525	5450	50			
					182/A2	**	CR1				650	8500	10			
		TUL580	L-5S	65	182/A2	**	CR1, CR2		1398	442	650	8500	10			
		TUE300	E-3	32	185/B	**	NOR, CR1		1623	504	700	9250	50	248	210	183
10	18.00R25	TUE401	E-4	55	185/B	**	NOR, CR1	13.00	1672	510	700	9250	50	239	200	176
		TUL580	L-5S	82	204/A2	**	CR1, CR2		1677	506	825	16000	10			
11	18.00R33	TUE400	E-4	55	191/B	**	NOR, CR1	13.00	1858	515	700	10900	50			
					77/B	**	CR1				525	7300	50		152	123
		TUL300	E-3/L-3	31	193/A2	**	CR1	17.00	1482	533	650	11500	10			
			IND-3		198/A2	***	NOR				800	13200	10			
					177/B	**	CR1				525	7300	50			
		TUL302	E3-3/L-3	31	193/A2	**	CR1	17.00			650	11500	10			
			IND-3		198/A2	***	NOR				800	13200	10			
		TUL500	L-5	71	193/A2	**	CR1	17.00	1545	534	650	11500	10			
13	21.00R33	TUE400	E-4	55	200/B	**	NOR, CR1	15.00	1980	590	700	14000	50			
14	21.00R35	TUE400	E-4	55	201/B	**	NOR, CR1	15.00	2032	590	700	14500	50	340	266	232
					185/B	**	CR1		1930	1602	607	525	9250	50	174	147
					201/A2	**	CR1				650	14500	10			
					206/A2	***	NOR				800	17000	10			
		TUL302	E-3/L-3	34	185/B	**	CR1	19.50			525	9250	50			
					201/A2	**	CR1				650	14500	10			
			IND-3		206/A2	***	NOR				650	14500	10			
		TUL400	E-4/L-4	55	185/B	**	NOR, CR1	19.50	1660	600	525	9250	50		138	117
					201/A2	**	NOR, CR1				650	14500	10			
		TUL500	L-5	80	201/A2	**	CR1	19.50	1672	604	650	14500	10	400	330	290
16	24.00R35	TUE400	E-4	63	209/B	**	NOR, CR1	17.00	2160	653	700	18500	50	400	330	290
		TUE402	E-4	63	209/B	**	NOR, CR1	17.00	2160	653	700	18500	50	410	350	300
					193/B	**	CR1				525	11500	50		192	158
					209/A2	**	CR1		22.00	1735	686	650	18500	10		
			IND-3		214/A2	***	NOR				800	21200	10			
		TUL300	E-3/L-3	36	183/B	**	CR1	22.00	1735	686	525	11500	50			
17	26.5R25				209/A2	**	CR1				650	18500	10			
	26.5R25	TUL302	E-3/L-3	36	209/A2	**	CR1	22.00	1735	686	525	11500	50			
			IND-3		214/A2	***	NOR				800	21200	10			
		TUL400	E-4/L-4	55	193/B	**	NOR, CR1	22.00	1788	685	525	11500	50	160	131	
					209/A2	**	NOR, CR1				650	18500	10			
		TUL500	L-5	97.5	209/A2	**	CR1	22.00	1760	690	650	18500	10			
		TUL580	L-5S	97.5	209/A2	**	CR1, CR2	22.00	1760	690	650	18500	10			
18	27.00R49	TUE400	E-4	70	223/B	**	HR2, NOR, CR1	19.50	2675	738	700	27250	50	550	440	350
		TUE402	E-4	75.5	223/B	**	HR2, NOR, CR1	19.50	2691	738	700	27250	50	610	490	395
					200/B	**	CR1		25.00	1860	769	525	14000	50	220	180
		TUL300	E-3/L-3	45	216/A2	**	CR1	25.00			650	22400	10			
					200/B	**	CR1				650	22400	10			
		TUL302	E-3/L-3	43	216/A2	**	CR1	25.00			525	14000	50			
					200/B	**	CR1				650	22400	10			
		TUL400	E-4/L-4	57.5	216/A2	**	NOR, CR1	25.00	1906	760	650	22400	10	187	150	
		TUL580	L-5S	97	216/A2	**	CR1	25.00	1906	770	650	22400	10			
20	30.00R51	TUE400	E-4	77	230/B	**	HR2, NOR, CR1	22.00	2887	825	700	33500	50	600	475	365
21	33.00R51	TUE400	E-4	94.9	235/B	**	HR2, NOR, CR1	24.00	3047	911	700	38750	50	690	527	420
22	33.25R35	TUE390	E-3	43.4	212/B	**	NOR, CR1	27.00	2222	861	525	2000	50		340	274
23	35.00R33	TUL500	L-5	97	224/A2	**	CR1	28.00	2038	864	650	28000	10			
24	36.00R51	TUE400	E-4	85	241/B	**	HR2, NOR, CR1	26.00	3190	979	700	46250	50	980	810	650
25	37.00R57	TUE400	E-4	92	245/B	**	HR2, NOR, CR1	27.00	3384	1031	700	51500	50	1000	880	720
26	37.25R35	TUE390	E-3	47.4	218/B	**	NOR, CR1	31.00	2389	946	525	23600	50		380	305
27	40.00R57	TUE400	E-4	98.1	250/B	**	HR2, NOR, CR1	29.00	3577	1116	700	60000	50	1130	1030	850
28	46.00R57	TUE410	E-4	98	252/B	**	HR2, NOR, CR1	32.00	3570	1180	700	63000	50	1150	1050	872
29	50.00R57	TUE410	E-4	98	257/B	**	HR2, NOR, CR1	24.00	3556	1270	600	7300	50	1178	1080	903
					196/B	**	CR1				425	12500	50			
30	850/65R25	TUE301	E-3/L-3	47	217/A2	**	NOR, CR1	27.00	1730	830	625	23000	10			
					268/B	**	HR2, NOR, CR1	44.00	4011	1534	600	10000	50			

备注:1."TRA代号"E-4/L-4"的"配方型号"CR1的轮胎主要用于装载机。  
2.16.00R25TUE401, 17.5R25TUL302, 20.5R25TUL302, 23.5R25TUL302, 29.5R25TUL302 待模具



# Loader and Grader



Tiresize	TUE301	TUE302+	TUL300	TUL302	TUL304	TUL305	TUL400	TUL500	TUL505	TUL510	TU201	TU202	Rimsizes	Equipment
340/80R18												*	18xW11	Loader/Grader
335/80R20												*	20xW10	Loader/Grader
405/70R20												*	20xDW13	Loader/Grader
405/70R24												*	24xDW13	Loader/Grader
14.00R24												*	24-10.00/1.5	Loader/Grader
850/65R25	*												25-27.00/3.5	Loader
750/65R25		*										*	25-24.00/3.0	Loader
650/65R25												*	25-19.50/2.5	Loader/Grader
15.5R25				*								*	25-12.00/1.5	Loader/Grader
17.5R25			*	*	*						*	*	25-14.00/1.5	Loader/Grader
20.5R25			*	*	*		*				*	*	25-17.00/2.0	Loader/Grader
23.5R25			*	*	*		*	*			*	*	25-19.50/2.5	Loader/Grader
26.5R25			*	*	*		*	*					25-22.00/3.0	Loader/Grader
29.5R25			*	*			*	*					25-25.00/3.5	Loader/Grader
650/65R25						*							25-19.50/2.5	Loader
29.5R29		*											29-25.00/3.5	Loader
875/65R29									*				29-28.00/3.5	Loader
35/65R33								*		*			33-28.00/3.5	Loader
45/65R45										*			45-36.00/4.5	Loader



## Benefits and main Features

- Optimum distribution of tread blocks for ride comfort and traction no loose ground
- Reinforced sidewall for improved stability and protection.
- All steel radial construction with an optimized load performance and operator comfort.
- High-tensile specialized wire reduces heat build up inside the tire.
- Lead time takes 1-2 weeks after order confirmation.

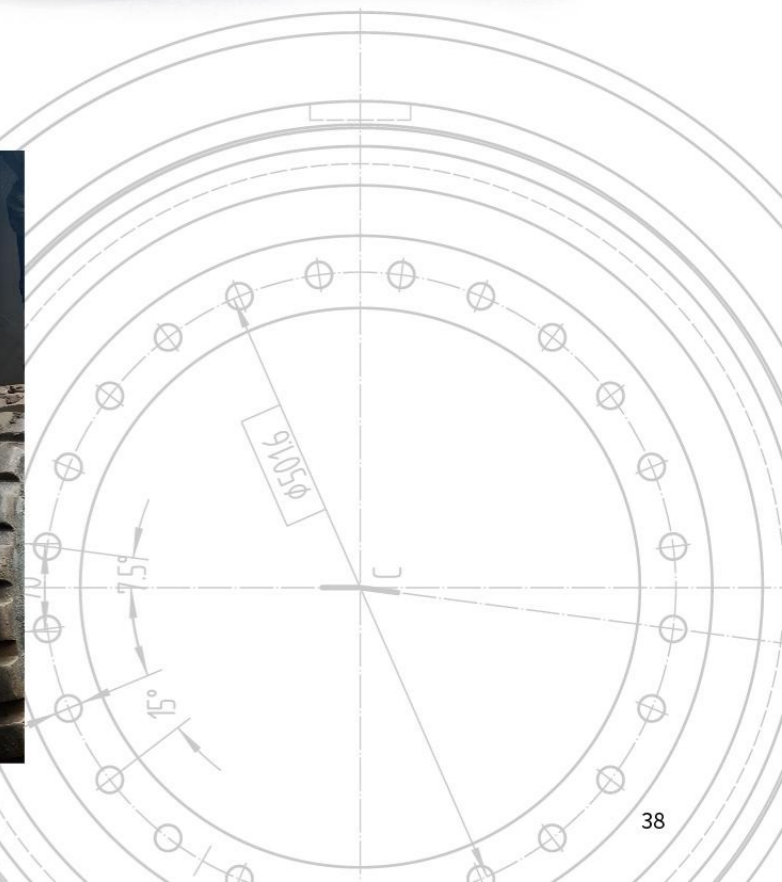
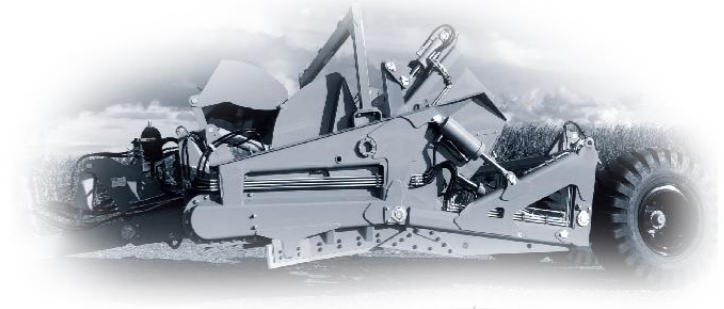
# Scrapers



Radial tire	
Tire size	Rim size
17.5R25	25-14.00/1.5 3PC
20.5R25	25-17.00/2.0 3PC
23.5R25	25-19.50/3.0 3/5PC
26.5R25	25-22.00/3.0 3/5PC
29.5R25	25-25.00/3.5 3/5PC
29.5R29	29-25.00/3.5 3/5PC
33.25R29	29-27.00/3.5 3/5PC
875/65R29	29-28.00/3.5 3/5PC
35/65R33	33-28.00/3.5 5PC
37.25R35	35-31.00/4.0 5PC



Bias tire		
Tire size	P.R.	Rim size
17.5-25	16,20	25-14.00/1.5 3PC
20.5-25	16,20,24	25-17.00/2.0 3PC
23.5-25	16,20,24	25-19.50/3.0 3/5PC
26.5-25	16,20,24,28	25-22.00/3.0 3/5PC
29.5-25	22,28,34	25-25.00/3.5 3/5PC
23.1-26	12,16,18	26xDW20
29.5-29	22,28,34	29-25.00/3.5 3/5PC
30.5L-32	18,20	32xDW27B
29.5-35	28,34,38,42	35-25.00/3.5 5PC
33.25-35	30,36,38,44	35-27.00/3.5 5PC



# Rigid Dump Trucks

Tire size	TUE300	TUE400	TUE400PRO	TUE401	TUE402	TUE402PRO	TUE406	TUE410	TUE410+	Rim size
14.00R25				*						25 - 10.00/1.7
16.00R25				*						25 - 11.25/2.0
18.00R25	*					*				25 - 13.00/2.5
18.00R33		*				*				33 - 13.00/2.5
21.00R33		*				*				33 - 15.00/3.0
21.00R35		*				*				35 - 15.00/3.0
24.00R35		*			*	*				35 - 17.00/3.5
27.00R49		*			*		*			49 - 19.50/4.0
30.00R51		*								51 - 22.00/4.5
33.00R51		*			*					51 - 24.00/5.0
36.00R51		*								51 - 26.00/5.0
37.00R57		*								57 - 27.00/6.0
40.00R57		*								57 - 29.00/6.0
46/90R57							*			57 - 32.00/6.0
50/80R57							*			57 - 34.00/6.0
53/80R63							*			63 - 36.00/6.0
59/80R63							*	*		63 - 44.00/560

Tires and wheels are available for the aftermarkets of below OEM manufactures

- BELAZ7555
- BELAZ75131
- BELAZ 75310
- CAT 769 B/C/D 771 770
- CAT 773A,B,C
- CAT 773B/C/D/E 775D/F
- CAT 777 B/C/D/E/F
- CAT 785C/D
- CAT 789D/XT5000
- CAT 793D/F
- CAT 795
- CAT 797
- KOMATSU 730E
- KOMATSU 830E
- KOMATSU 930E-4
- KOMATSU 980E-4
- KOMATSU HD785-5/-7
- KOMATSU HD465-7/HD605-7
- KOMATSU HD1500-7/-8
- SANY SKT90S
- TEREX MT3700B
- TEREX MT4400
- TEREX TR100
- VOVLO R100E
- XCMG XDE130

# Articulated Dump Trucks



TUE301 TUL300 TUL302 TUL306 TUL400 TUL401 TUL402 TUE410

Tire size	TUE301	TUE302+	TUL300	TUL302	TUL305	TUL400	TU306	TU440	Rim size
850/65R25	*								25-27.00/3.5
750/65R25		*							25-24.00/3.0
15.5R25			*						25-12.00/1.5
17.5R25			*	*					25-14.00/1.5
20.5R25			*	*					25-17.00/2.0
23.5R25			*	*		*			25-19.50/2.5
26.5R25			*	*		*			25-22.00/3.0
29.5R25			*	*		*			25-25.00/3.5
650/65R25					*				25-19.50/2.5
29.5R29		*							29-25.00/3.5
33.25R29 (800/80R29)							*		29-27.00/3.5
875/65R29									29-28.00/3.5

Tires and wheels are available for the aftermarkets of below OEM manufactures

- BELL B50D
- CAT 740B
- CAT 745
- VOLVO A25C/D/G A30C/D/E/F/G
- VOLVO A40D/E/F A40S
- TEREX TA30
- John Deere 260E
- John Deere 460E-11
- Komatsu HM300-5
- Komatsu HM400-5
- Hydrema 707G Powver+
- Doosan DA45-5

Mining & Earthmoving



Sample of BEST sellers

Tire 27.00R49

## Benefits and main Features

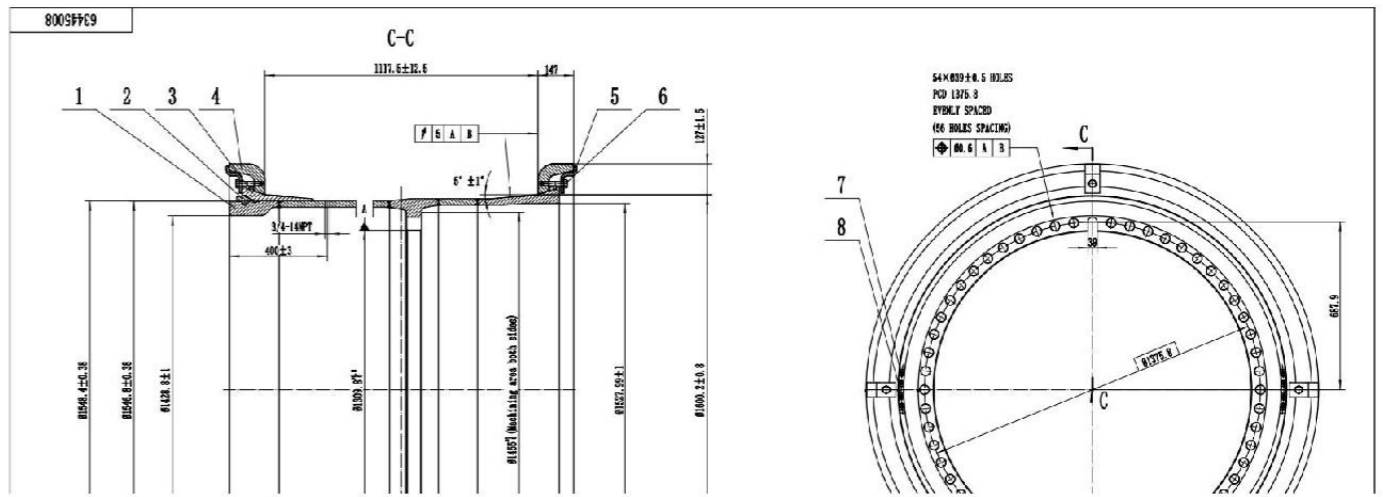
- Wear, Cut & Heat resistance compounds for optimal performance.
- Aggressive extra deep E4 tread depth in various of patterns, effectively improve the lefttime.
- Reinforced sidewall for improved stability and protection.
- All steel radial construction with an optimized load performance and operator comfort.
- High-tensile specialized wire reduces heat build up inside the tire.
- Lead time takes 1-2 weeks after order confirmation.

Sample of BEST sellers

Rim 49-19.50/4.0

## Benefits and main Features

- Rim assembly in 5PC, also available in 7PC
- Construction wheel rims are fully utilize high strength low alloy steel.
- Designed for heavy off the road dump trucks, helping maintain proper tire pressure and extending tire life.
- Suits for CAT777, Komastu-785, Telex TR100, Volvo R100E, Hitachi CH150, Euclid R100, etc.
- Components are available, covers Rim base, flanges, BSB, Rim, Lock ring, Sections, O-rings, Valves.
- Lead time takes 3-4 weeks for rim assembly after order confirmation.



MULTISTAR rim assembly 63-44.00/5.0 for CAT 797F



TUL580		TUL580PRO		TU600	
Radial tire	Bias tire	TUL580	TUL580PRO	TU600	Rim size
10.00R20	10.00-20 14PR		*		20-7.50
12.00R20	12.00-20 28PR		*		20-8.50
12.00R24	12.00-24 28PR	*	*		24-8.50
14.00R24	14.00-24 28PR	*	*		24-10.00
17.5R25	17.5-25 24PR	*	*		25-14.00/1.5
18.00R25	18.00-25 40PR	*	*		25-13.00/2.5
26.5R25	26.5-25 36PR	*	*	*	25-22.00/3.0
29.5R25		*	*	*	25-25.00/3.5
29.5R29			*	*	29-25.00/3.5
35/65R33			*	*	33-28.00/3.5

TU600 is for Underground loader, Hauler Truck  
 TUL580/580PRO is for Underground loader.

### Benefits and main features

- Special tread compound, smooth deep tread design provides excellent resistance and improves tire service life.
- Reinforced sidewall protection rib help reduce all kinds of damage to sidewall.
- The aggressive TU600 open tread pattern provides outstanding grip, strong traction. And outstanding durability.

BEST SELLERS	
<b>Rim Size</b> 29-27.00	<b>Tire Size</b> 33.25R29
<b>Sandvik TH540, CAT AD45B</b>	
<b>Rim Size</b> 29-25.00 Forged Gutter Disc	<b>Tire Size</b> 29.5R29
<b>CAT AD45B, R2900G, Sandvik LH517</b>	
<b>Rim Size</b> 25-22.00	<b>Tire Size</b> 26.5R25
<b>CAT AD30 / R1700G, Sandvik LH514 / TH540, Atlas Copco MT436, Bell B30L / B35L</b>	
<b>Rim Size</b> 33-28.00 Forged Gutter Disc	<b>Tire Size</b> 35/65R33
<b>Sandvik LH621 / LH663, Atlas Copco MT5010 MT5020 MT6020, CATAD55 / AD60 / 988G / 988H / 834G / 834H</b>	



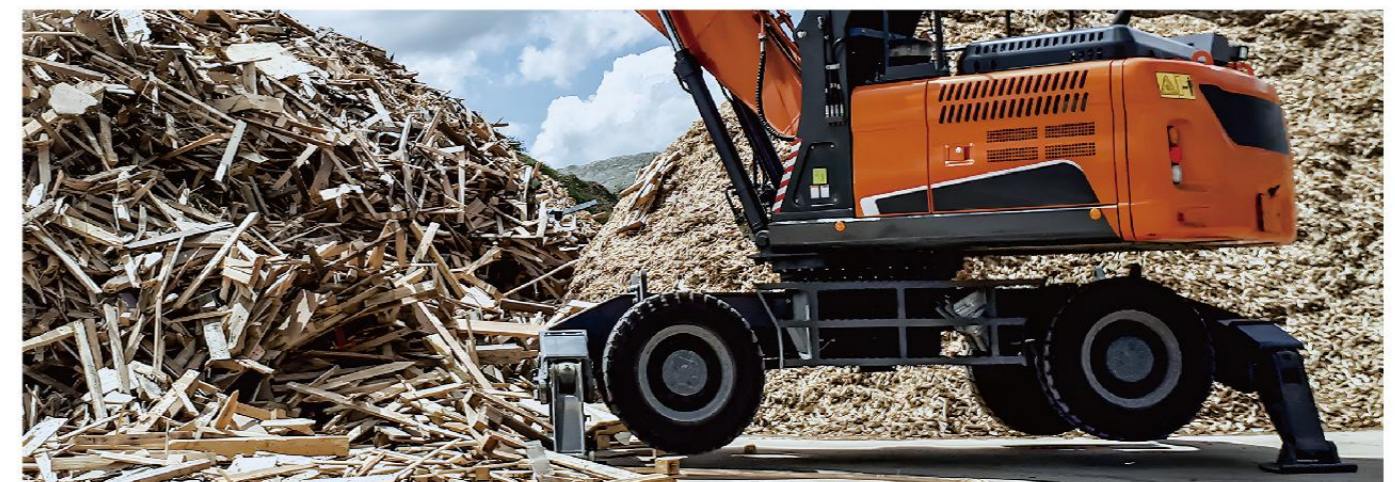
### Twin/Dual solid tire and wheel solution



MS701		MS703		MS705	
Tire size	Pattern			Rim size	
28x9-15	MS701,MS703,MS705			7.00-15 Dual	
3.00-15	MS701,MS705,MS705			8.00-15 Dual	
10.00-20	MS701			7.50-20 Dual	
12.00-20	MS701			8.00-20 Dual	
12.00-24	MS701			8.50-24 Dual	
14.00-24	MS701,MS708			10.00-24 Dual	
14.00-25	MS701			25-10.00 Dual	

### Benefits and main features

- An engineered, solid tire solution specifically designed for mobile excavators with a massive non-directional tread pattern.
- The tire large contact area reduces tire stress and uneven wear for maximum durability.
- High loading capacity with large profile blocks deliver excellent traction on a wide range of surfaces for Scrap yard Applications.
- Non-marking (white or grey or green color) is also available.
- A wide range of heavy duty wheels & rims in 2 and 3 PC adhere to TRA/ETRTO standards suit all types of material handling equipment.
- Rubber spacer ring is also available.



- Port tires and wheels be suitable for straddle carriers, container forklifts, container handler, reach stackers, Rubber Tyred Gantry(RTG) cranes and other machinery.

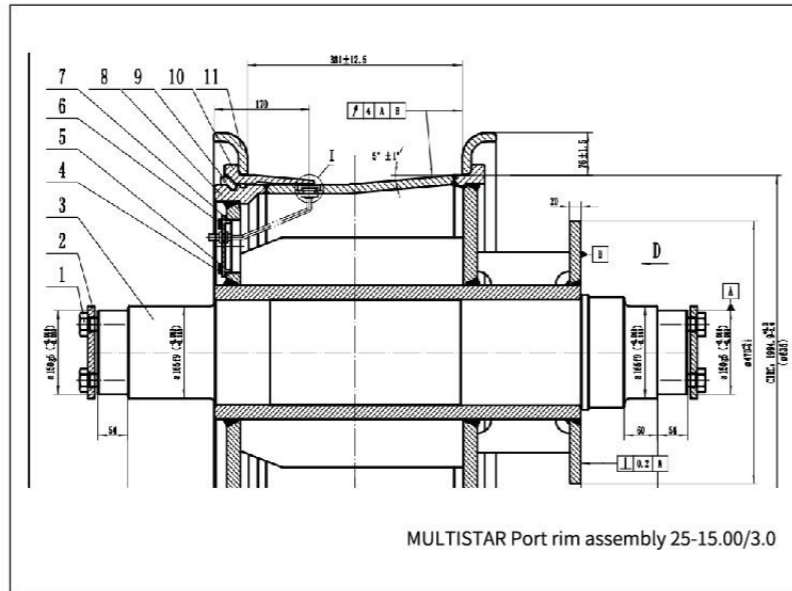
OEM brands like

AICRANE	Amlift	Cargotec	Combilift	Dafang	Doosan
Kalmar	Konecranes	Liebherr	Manitowoc	MI-Jack	Mobicon Systems
	Palfinge	SANY	Tadano	TNT	
		XCMG	Zoomlion		



TUP408 TUP420

Radial tire	Load index	Pattern
280/75R22.5	163A8	TUP408
310/80R22.5	175A8	TUP408
12.00R24	178A5	TUP420
14.00R24	193A5	TUP420
Bias tire	P.R	
12.00-20	20	
12.00-24	20,24	
14.00-24	24,28,32	
16.00-25	28,32,36	
18.00-25	40,42,44	
21.00-25	40,44	
23.5-25	40	
24.00-29	42,48	
18.00-33	36,40	
21.00-35	40,42,44	
24.00-35	48	



Features

- Enjoyed a high reputation for forestry high quality level
- OE certified and recognized around the world
- Widest range and various patterns
- uncture resistance pattern design & special protected sidewall design & strong lugs guaranty a high working hours
- All tires are with Steel Belt but SWAMPER and Forest-Leader

Best Sellers

TyreSize	Pattern	TRApattern	P.R.	TT/TL	TreadDepth (mm)	Rim	Outer Diameter (mm)	Section Width(mm)	LoadCapacity	Speed 30km/h
									InflatiorkPa	Loadkg
*30.5L-32	SLSteelBelt	LS-2	20	TT/TL	62.5	DH27 DH27H	1868	775	210	6000
			26	TL					280	7100
*DH35.5L-32	SLSteelBelt	LS-2	20	TT/TL	63.5	DH31 DH31H	1935	878	170	7300
			26	TL					240	8750

TIANLI OEM



More.....

## Forestry trailers and forwarders



FF	P.R.	FFX1	P.R.	FG	P.R.	LSMG - N	P.R.
*22/65 - 25	16	650/65 - 26.5	20	23.1 - 26	16	750/55 - 26.5	20,24
*500/60 - 22.5	16,20	710/45 - 26.5	20	28L - 26	20		
*600/50 - 22.5	16	750/55 - 26.5	20,24	30.5L - 32	20,26		
*600/55 - 26.5	16,20	780/50 - 28.5	24	500/60 - 26.5	16,20	LSMG - T	P.R.
*600/60 - 30.5	16,20			600/50 - 22.5	16,20,24	600/65-34	16,20
*650/65 - 26.5	20	Forestry trailers (Trac or R-1)	P.R.	600/55 - 26.5	16,20	700/55-34	16,20,24
*700/50 - 30.5	16,20	26x12-12	8	600/60 - 30.5	20		
*710/40 - 22.5	16	11.5/80-15.3	12	650/45 - 22.5	16,20,24		
*710/45 - 26.5	20,24	400/60-15.5	14	710/40 - 22.5	16,20,24		
*750/55 - 26.5	16,20	15.0/55-17	14	710/40 - 24.5	20		
*800/40 - 26.5	16,20	19.0/45-17	16	710/45 - 26.5	16,20		
*800/45 - 30.5	16,20	500/50-17	18	780/50 - 28.5	24		
		405/70R20	149A8149B	800/35 - 22.5	20		
		400/55-22.5	16	800/40 - 26.5	20		
		38x18-20	12	710/45R26.5	168A8176A		
		35x19-16.1	12				

## Skidders and Forestry harvesters



SL	P.R.	SU-SXWP ULTRA	P.R.	SLF	P.R.	SWAMPER	P.R.
23.1-26	16	66x43.00-25	20	66x43.00-25	20	68x50.00-32	10,20
23.1-34	16	66x43.00-26	20	66x43.00-26	20	68x60.00-32	20
24.5-32	16,20	67x34.00-25	20	72x47.00-25	20	68x70.00-32	20,24
28L-26	16,20,26	67x34.00-26	20	78x45.00-32	20		
30.5L-32	20,26			DH73x44.00-32	20		
DH35.5L-32	20,26			DH73x50.00-32	20	FFX-II	P.R.
700/70-34	16,20,24					750/55-26.5	20
26.5-25	36						

SEWP	P.R.	FOREST LEADER	P.R.
16.9-30	16	600/60R28	159A8/156B
18.4-26	16	540/65R28	152A8/149B
18.4-30	16	650/65R38	171A8/168B
18.4-34	16		
18.4-38	16		
20.5-25	16,20		
20.8-38	16		
23.1-26	16,20		
24.5-32	16,20,24		
30.5L-32	16,20,26		
380/85-24	14		
380/85-28	14		
420/85-28	14		





# Trucks & Buses

Full range of wide base



Type														Wheel													
Tyre Size	Pattern	Type	Ply Rating	Unloaded inflated (mm) OD. x SW.	Max. Load (kg)	Pressure	Speed	Rim Size	Stud Holes		CBD (mm)	Offset/ET (mm)	Thickness (mm) Rim Disc	Model No.	Stud Holes		CBD (mm)	Offset/ET (mm)	Thickness (mm) Rim Disc	Model No.							
									No.	Dia. (mm)					No.	Dia. (mm)											
WIDE BASE TRUCK TYRES																											
385/55R19.5	GL251T	TL	20	919x386	4000	900	J	13.00X19.5	8/10	Φ21.5/27	Φ275	Φ221	0	7	14	Φ21.5/27	Φ275	Φ221	0	7	14	875230825					
435/50R19.5	GL251T	TL	20	931x438	4500	900	J	14.00x19.5	8/10	Φ27/32	Φ335	Φ281	0	7	14	Φ27/32	Φ335	Φ281	0	7	14	875230826					
445/45R19.5	GL251T	TL	22	895x446	4500	900	J	14.00x19.5	8/10	Φ27/32	Φ335	Φ281	0	7	14	Φ27/32	Φ335	Φ281	0	7	14	875230827					
425/65R22.5	GL278A	TL	20	1124x422	5000	830	K	13.00x22.5	8/10	Φ26	Φ275/Φ335	Φ221/Φ281	0	7	14	Φ26	Φ275/Φ335	Φ221/Φ281	0	7	14	875230835					
425/65R22.5	GL286	TL	20	1124x430	5000	830	K	13.00x22.5	8/10	Φ26	Φ285/Φ335	Φ220/Φ281	0	7	14	Φ26	Φ285/Φ335	Φ220/Φ281	0	7	14	875230835					
425/65R22.5	GL689A	TL	20	1124x430	5150	825	K	13.00x22.5	8/10	Φ26	Φ285/Φ335	Φ220/Φ281	0	7	14	Φ26	Φ285/Φ335	Φ220/Φ281	0	7	14	875230835					
445/50R22.5	GL251T	TL	20	1018x445	4625	830	K	14.00x22.5	8/10	Φ26	Φ285/Φ335	Φ220/Φ281	0	7	14	Φ26	Φ285/Φ335	Φ220/Φ281	0	7	14	875230836					
445/50R22.5	GL260D	TL	20	1018x445	4625	830	L	14.00x22.5	8/10	Φ26	Φ285/Φ335	Φ220/Φ281	0	7	14	Φ26	Φ285/Φ335	Φ220/Φ281	0	7	14	875230836					
455/40R22.5	GL251T	TL	20	936x453	4500	900	J	14.00x22.5	8/10	Φ26	Φ285/Φ335	Φ220/Φ281	0	7	14	Φ26	Φ285/Φ335	Φ220/Φ281	0	7	14	875230836					
445/65R22.5	GL670T	TL	20	1150x444	5800	900	K	14.00x22.5	8/10	Φ26	Φ285/Φ335	Φ220/Φ281	0	7	14	Φ26	Φ285/Φ335	Φ220/Φ281	0	7	14	875230836					
445/65R22.5	GL689A	TL	20	1150x444	5800	900	K	14.00x22.5	8/10	Φ26	Φ285/Φ335	Φ220/Φ281	0	7	14	Φ26	Φ285/Φ335	Φ220/Φ281	0	7	14	875230836					



Type														Wheel													
Tyre Size	Pattern	Type	Ply Rating	Unloaded inflated (mm) OD. x SW.	Max. Load (kg)	Pressure	Speed	Rim Size	Stud Holes		CBD (mm)	Offset/ET (mm)	Thickness (mm) Rim Disc	Model No.	Stud Holes		CBD (mm)	Offset/ET (mm)	Thickness (mm) Rim Disc	Model No.							
									No.	Dia. (mm)					No.	Dia. (mm)											
7.00R16LT	Steer/drive	TT	14	775x200	1320/118	770	K	5.50F16	5	Φ16	Φ165	Φ165	0	5	12	5	Φ16	Φ165	Φ165	0	5	12	875230812				
7.50R16LT	Steer/drive	TT	14	805x215	1500/132	770	K	6.00G16	5	Φ18	Φ177.8	Φ123	0	5	12	5	Φ18	Φ177.8	Φ123	0	5	12	875230813				
8.25R16LT	Steer/drive	TT	14	855x235	1800/160	770	K	6.50H16	6	Φ32	Φ222.25	Φ163	138	7	14	6	Φ32	Φ222.25	Φ163	138	7	14	875230814				
8.25R20	Steer/drive	TT	14	974x236	2240/212	830	K	6.50-20	10	Φ26	Φ335	Φ281	153	7	14	10	Φ26	Φ335	Φ281	153	7	14	875230815				
9.00R20	Steer/drive	TT	16	1019x259	2575/243	790	K	7.00-20	10	Φ26	Φ335	Φ281	180	7	14	10	Φ26	Φ335	Φ281	180	7	14	875230816				
10.00R20	Steer/drive	TT	16	1055x278	3000/263	770	F	7.50-20	8/10	Φ32.5/Φ26	Φ285/Φ335	Φ221/Φ281	151	7	14	8/10	Φ32.5/Φ26	Φ285/Φ335	Φ221/Φ281	151	7	14	875230817				
11.00R20	Steer/drive	TT	18	1085x293	3550/305	930	F	8.00-20	8/10	Φ32.5/Φ26	Φ285/Φ335	Φ221/Φ281	158/0	7	14	8/10	Φ32.5/Φ26	Φ285/Φ335	Φ221/Φ281	158/0	7	14	875230818				
12.00R20	Steer/drive	TT	18	1125x315	3790/327	770	F	8.50-20	10	Φ26	Φ335	Φ281	180/161	7	14	10	Φ26	Φ335	Φ281	180/161	7	14	875230819				
12.00R24	Steer/drive	TT	20	1226x315	4500/412	930	J	8.50-24	10	Φ26	Φ335	Φ281	180	7	16	10	Φ26	Φ335	Φ281	180	7	16	875230820				
11R22.5	Steer/drive	TL	16	1050x279	3150/2900	850	M	8.25x22.5	8/10	Φ32.5/Φ26	Φ285/Φ335	Φ221/Φ281	169/120	7	14	8/10	Φ32.5/Φ26	Φ285/Φ335	Φ221/Φ281	169/120	7	14	875230827				
12R22.5	Steer/drive	TL	16	1085x300	3350/3075	830	L	9.00x22.5	8/10	Φ32.5/Φ26	Φ285/Φ335	Φ221/Φ281	170/161	7	14	8/10	Φ32.5/Φ26	Φ285/Φ335	Φ221/Φ281	170/161	7	14	875230828				
275/70R22.5	Steer/drive	TL	18	958x276	3150/2900	900	J	8.25x22.5	8/10	Φ32.5/Φ26	Φ285/Φ335	Φ221/Φ281	169/120	7	14	8/10	Φ32.5/Φ26	Φ285/Φ335	Φ221/Φ281	169/120	7	14	875230829				
295/80R22.5	Steer/drive	TL	16	1044x298	3350/3075	830	M	9.00x22.5	8/10	Φ32.5/Φ26	Φ285.75/Φ335	Φ220/Φ281	170/161	7	14	8/10	Φ32.5/Φ26	Φ285.75/Φ335	Φ220/Φ281	170/161	7	14	875230831				
315/60R22.5	Steer/drive	TL	18	950x312	3550/3150	900	L	9.00x22.5	8/10	Φ32.5/Φ26	Φ285.75/Φ335	Φ220/Φ281	170/161	7	14	8/10	Φ32.5/Φ26	Φ285.75/Φ335	Φ220/Φ281	170/161	7	14	875230830				
315/70R22.5	Steer/drive	TL	16	1014x312	3450/3150	830	L	9.00x22.5	8/10	Φ32.5/Φ26	Φ285.75/Φ335	Φ220/Φ281	170/161	7	14	8/10	Φ32.5/Φ26	Φ285.75/Φ335	Φ220/Φ281	170/161	7	14	875230830				
315/80R22.5	Steer/drive	TL	20	1076x312	4000/3350	850	L	9.00x22.5	8/10	Φ32.5/Φ26	Φ285.75/Φ335	Φ220/Φ281	170/161	7	14	8/10	Φ32.5/Φ26	Φ285.75/Φ335	Φ220/Φ281	170/161	7	14	875230832				
385/55R22.5	Steer/drive	TL	20	996x386	4500	900	K	12.25x22.5	10	Φ32.5	Φ335	Φ281	74	7	14	10	Φ32.5	Φ335	Φ281	74	7	14	875230833				
385/65R22.5	Steer/drive	TL	20	1072x389	4500	900	K	11.75x22.5	10	Φ32.5/Φ26	Φ285/Φ335	Φ221/Φ281	0/120	7	14	10	Φ32.5/Φ26	Φ285/Φ335	Φ221/Φ281	0/120	7	14	875230834				
11R24.5	Steer/drive	TL	14	1104x279	3000/2725	720	M	8.25x24.5	10	Φ26	Φ285.75	Φ220	168	7	12	10	Φ26	Φ285.75	Φ220	168	7	12	875230837				
285/75R24.5	Steer/drive	TL	14	1050x283	2800/2575	760	M	8.25x24.5	10	Φ26	Φ285.75	Φ220	168	7	12	10	Φ26	Φ285.75	Φ220	168	7	12	875230838				



# Heavy load trailers



Type														Wheel													
Tyre Size	Pattern	Type	Ply Rating	Unloaded inflated (mm) OD. x SW.	Max. Load (kg)	Pressure	Speed	Rim Size	Stud Holes		CBD (mm)	Offset/ET (mm)	Thickness (mm) Rim Disc	Model No.	Stud Holes		CBD (mm)	Offset/ET (mm)	Thickness (mm) Rim Disc	Model No.							
									No.	Dia. (mm)					No.	Dia. (mm)											
215/75R17.5	Steer/drive	TL	14	767x211	1650/1500	760	M	6.00x17.5	5	Φ29	Φ203.2	Φ146	128	5	10	5	Φ29	Φ203.2	Φ146	128	5	10	875230821				
235/75R17.5	Steer/drive	TL	14	797x233	1850/1700	760	M	6.75x17.5	6	Φ32	Φ205	Φ161	125	5	10	6	Φ32	Φ205	Φ161	125	5	10	875230822				
245/70R17.5	Steer/drive	TL	18	789x248	2725/2575	860	J	7.50x17.5	8	Φ32	Φ205	Φ161	125	5	10	8	Φ32	Φ205	Φ161	125	5	10	875230822				
225/70R19.5	Steer/drive	TL	14	811x226	1800/1700	760	M	6.75x19.5	6	Φ32	Φ222.25	Φ164	147	7	12	6	Φ32	Φ222.25	Φ164	147	7	12	875230823				
245/70R19.5	Steer/drive	TL	14	839x248	2060/1950	760	M	7.50x19.5	6	Φ32	Φ222.25	Φ164	147	7	12	6	Φ32	Φ222.25	Φ164	147	7	12	875230824				
265/70R19.5	Steer/drive	TL	14	876x262	2500/2360	850	L	7.50x19.5	6	Φ32	Φ222.25	Φ164	147	7	12	6	Φ32	Φ222.25	Φ164	147	7	12	875230825				
11R22.5	Steer/drive	TL	16	1050x27	3150/2900	850	M	8.25x22.5	8/10	Φ32.5/Φ26	Φ285/Φ335	Φ221/Φ281	169/120	7	14	8/10	Φ32.5/Φ26	Φ285/Φ335	Φ221/Φ281	169/120	7	14	875230827				
12R22.5	Steer/drive	TL	16	1085x30	3350/3075	830	L	9.00x22.5	8/10	Φ32.5/Φ26	Φ285/Φ335	Φ221/Φ281	170/161	7	14	8/10	Φ32.5/Φ26	Φ285/Φ335	Φ221/Φ281	170/161	7	14	875230828				
275/70R22.5	Steer/drive	TL	18	958x276	3150/2900	900	J	8.25x22.5	8/10	Φ32.5/Φ26	Φ285/Φ335	Φ221/Φ281	169/120	7	14	8/10	Φ32.5/Φ26	Φ285/Φ335	Φ221/Φ281	169/120	7	14	875230829				
295/80R22.5	Steer/drive	TL	16	1044x29	3350/3075	830	M	9.00x22.5	8/10	Φ32.5/Φ26	Φ285.75/Φ335	Φ220/Φ281	170/161	7	14	8/10	Φ32.5/Φ26	Φ285.75/Φ335	Φ220/Φ281	170/161	7	14	875230831				
315/60R22.5	Steer/drive	TL	18	950x312	3550/3150	900	L	9.00x22.5	8/10	Φ32.5/Φ26	Φ285.75/Φ335	Φ220/Φ281	170/161	7	14	8/10											

# Passenger Cars, SUV & Winter tire and wheels

Multistar's complete wheel and tire assemblies are also covering for the market of automobile including passenger cars, off-road cars, 4x4, pick-ups and modified cars. We supply a wide range of quality branded tires and steel wheels in various bolt patterns, with sizes from 13 to 22 inch in diameter.



- Passenger Car tires – size 13” - 30” in rim diameters  
Max size: 275/25R30XL
- Sport Utility Vehicle tires – size 15” – 26” in rim diameters  
Max size: 37x13.50R26LT
- Winter tires – size 13” – 21” in rim diameters  
Max size: 295/40R21



# Lawn, Garden & Turf



Tyre										Wheel						
Tyre Size	Pattern	Type	Ply Rating	Unloaded Inflated OD. x SW.	Max Load (LBS)	Pressure	Speed	Rim Size	No.	Stud Holes Dia.	PC Dia.	Center Hole Dia.	Offset/ET	Thickness Rim	Thickness Disc	Model No.
11x4.00-4	P332	TL	4	273x105mm	330	46bar	15km/h	3.25x4	6	Φ15	114.3	72	1	*	*	775230741
11x4.00-5	P332	TL	4	276x102mm	325	46bar	15km/h	3.00x5	6	Φ15	114.3	72	1	*	*	775230742
13x5.00-6	P332	TL	4	316x128mm	440	40bar	15km/h	4.50x6	5	Φ13.5	100	60	1	*	*	775230743
15x6.00-6	P332	TL	4	380x160mm	570	30bar	15km/h	6.00x6	6	Φ14.5	114.3	81	0	*	*	775230744
16x6.50-8	P332	TL	4	400x165mm	620	28bar	15km/h	5.375x8	6	Φ14.5	110	68.5	23	*	*	775230745
16x6.50-8	P332	TL	6	412x167mm	785	42bar	15km/h	5.375x8	6	Φ13.5	114.3	79.5	0	*	*	775230746
18x8.50-8	P332	TL	4	449x210mm	815	22bar	15km/h	7.00x8	6	Φ12	114.3	79.5	-34	*	*	775230747
18x9.50-8	P332	TL	4	465x223mm	1040	24bar	15km/h	7.00x8	8	Φ15	203.2	153.9	-65.5	*	*	775230748
20x8.00-8	P332	TL	4	507x207mm	950	22bar	15km/h	6.50x8	6	Φ18.5	135	100	5	*	*	775230749
20x10.00-8	P332	TL	4	500x236mm	1190	22bar	15km/h	7.00x8	6	Φ15	114.3	72	1	*	*	775230750
23x8.50-12	P332	TL	4	579x206mm	1120	22bar	15km/h	7.00x12	6	Φ15	114.3	72	1	*	*	775230751
23x9.50-12	P332	TL	4	580x232mm	1380	24bar	15km/h	7.00x12	5	Φ13.5	100	60	1	*	*	775230752
23x10.50-12	P332	TL	4	585x250mm	1340	20bar	15km/h	8.50x12	6	Φ14.5	114.3	81	0	*	*	775230753
24x12.00-12	P332	TL	4	606x295mm	1710	20bar	15km/h	10.50x12	6	Φ14.5	110	68.5	23	*	*	775230754
24x12.00-12	P332	TL	6	615x295mm	2260	32bar	15km/h	10.50x12	6	Φ13.5	114.3	79.5	0	*	*	775230755
24x12.00-12	P332	TL	8	610x293mm	2910	50bar	15km/h	10.50x12	6	Φ12	114.3	79.5	-34	*	*	775230756
26x12.00-12	P332	TL	6	655x310mm	2450	35bar	15km/h	10.50x12	8	Φ15	203.2	153.9	-65.5	*	*	775230757
26x12.00-12	P332	TL	8	655x310mm	3020	50bar	15km/h	10.50x12	6	Φ18.5	135	100	5	*	*	775230758
13x5.00-6	P328	TL	2	330x118mm	295	20bar	15km/h	3.50x6	5	Φ13.5	100	60	1	*	*	775230759
16x6.50-8	P328	TL	4	418x162mm	615	28bar	15km/h	5.375x8	6	Φ14.5	114.3	81	0	*	*	775230760
18x9.50-8	P328	TL	2	455x222mm	695	12bar	15km/h	7.00x8	5	Φ14.5	110	68.5	23	*	*	775230761
20x10.00-8	P328	TL	4	514x242mm	1190	22bar	15km/h	8.00x8	6	Φ13.5	114.3	79.5	0	*	*	775230762
23x10.50-12	P328	TL	4	585x260mm	1340	20bar	15km/h	8.50x12	6	Φ12	114.3	79.5	-34	*	*	775230763
31x15.5-15	P328	TL	10	810x405mm	3300	60bar	15km/h	13.00x15	8	Φ15	203.2	153.9	-65.5	*	*	775230764
11x4.00-5	P508	TL	4	280x100mm	325	46bar	15km/h	3.00x5	6	Φ15	114.3	72	1	*	*	775230765
13x5.00-6	P508	TL	4	327x120mm	440	40bar	15km/h	3.50x6	6	Φ15	114.3	72	1	*	*	775230766
15x6.00-6	P508	TL	4	367x164mm	570	30bar	15km/h	4.50x6	5	Φ13.5	100	60	1	*	*	775230767
16x6.50-8	P508	TL	4	414x169mm	620	28bar	15km/h	5.375x8	6	Φ14.5	114.3	81	0	*	*	775230768
16x6.50-8	P508	TL	6	410x165mm	720	36bar	15km/h	5.375x8	5	Φ14.5	110	68.5	23	*	*	775230769
16x6.50-8	P508	TL	10	410x165mm	800	36bar	15km/h	5.375x8	6	Φ13.5	114.3	79.5	0	*	*	775230770
16x6.50-8	P508	TL	24	410x165mm	990	65bar	15km/h	5.375x8	6	Φ12	114.3	79.5	-34	*	*	775230771
18x8.50-8	P508	TL	4	410x165mm	815	22bar	15km/h	7.00x8	8	Φ15	203.2	153.9	-65.5	*	*	775230772
18x9.50-8	P508	TL	4	451x217mm	1040	40bar	15km/h	7.00x8	8	Φ15	203.2	153.9	-65.5	*	*	775230773
16x6.50-8	P512	TL	2	400x163mm	415	14bar	15km/h	5.375x8	6	Φ15	114.3	72	1	*	*	775230774
16x6.50-8	P512	TL	4	400x167mm	620	28bar	15km/h	5.375x8	6	Φ15	114.3	72	1	*	*	775230775
16x6.50-8	P512	TL	6	410x167mm	785	42bar	15km/h	5.375x8	5	Φ13.5	100	60	1	*	*	775230776
20x8.00-8	P512	TL	2	488x210mm	600	10bar	15km/h	6.50x8	6	Φ14.5	114.3	81	0	*	*	775230777
20x8.00-8	P512	TL	4	488x210mm	950	22bar	15km/h	6.50x8	5	Φ14.5	110	68.5	23	*	*	775230778

All tyres/rims confirm to ETRTO & TRA standards

**Benefits and main features**

- 95% of all orders for this segment as complete wheel assemblies
- A wide range of tire sizes and tire patterns are available
- Two piece weld rims and Rolled rims are both available, with various of bolt patterns.
- Packing and labeling are available.

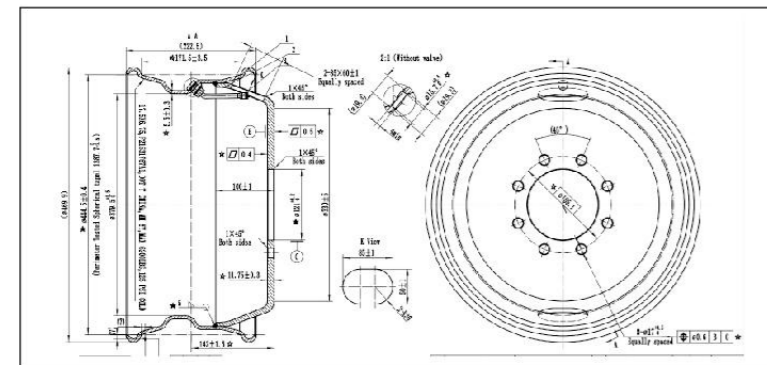
# On/Off highway Trailers

## Long heavy Haul Trailers

- Covering Gooseneck, Drop Deck trailers, Dolly trailers, Flat Deck trailers, Dumps, Log trailers, and more
- Available tires branded by ADVANCE, DOUBLESTAR, HAIDA, BOTO, Kapsen, and more
- Available rims in both Steel and Aluminum materials
- Available Single and Dual types



Tyre								Wheel							
Tyre Size	Pattern	Type	Ply Rating	Unloaded inflated (mm) OD. x SW.	Load Index	Pressure	Speed	Rim Size	Stud Holes No.	Dia. (mm)	PCD.(mm)	CBD (mm)	Offset/ET.(mm)	Thickness (mm) Rim Disc	Model No.
215/75R17.5	Steer/drive	TL	16	767x211	135/133J	760	J	6.00x17.5	5	Φ29	Φ203.2	Φ146	128	5 10	TW75230821
235/75R17.5	Steer/drive	TL	18	797x233	143/141J	760	J	6.75x17.5	6	Φ32	Φ205	Φ161	125	5 10	TW75230822
245/70R17.5	Steer/drive	TL	18	789x248	143/141J	860	J	7.50x17.5	6	Φ32	Φ205	Φ161	125	5 10	TW75230823
225/70R19.5	Steer/drive	TL	14	811x226	128/126M	760	M	6.75x19.5	8	Φ32	Φ285	Φ221	144	6 12	TW75230824
245/70R19.5	Steer/drive	TL	14	839x248	133/131M	760	M	7.50x19.5	6	Φ32	Φ222.25	Φ164	135	6 12	TW75230825
265/70R19.5	Steer/drive	TL	16	876x262	140/138M	850	M	7.50x19.5	8	Φ27-Φ32	Φ275	Φ221	135	6 12	TW75230826
285/70R19.5	Steer/drive	TL	18	876x262	150/147J	850	J	8.25x19.5	10	Φ27-Φ32	Φ225	Φ176	135	6 12	TW75230827
255/70R22.5	Steer/drive	TL	16	930x255	140/137M	830	M	7.50x22.5	10	Φ27-Φ32	Φ275	Φ221	135	6 12	TW75230828
275/70R22.5	Steer/drive	TL	16	958x276	148/145M	830	M	8.25x22.5	10	Φ27-Φ32	Φ335	Φ281	0,120,168	6 12	TW75230829



# On/Off highway Trailers

## Utility Trailers

- Covering Dump trailers, Tilt trailers, Deck trailers, Boat trailers, Livestock trailers, Miningtrailers, Caravans, and more
- Available tires branded by DOUBLESTAR, BOTO, Multistar, and more
- Wheels are available in both Steel and Aluminum materials
- Wheels in white/black/silver with or without blue & white stripes
- Wheels in galvanized



Tyre				Wheel												
Tyre Size	Pattern	Type	Ply Rating	Unloaded inflated OD. x SW.	Max. Load (kg)	Pressure	Speed	Rim Size	Stud Holes No.	Dia.	PC Dia.	Center Hole Dia.	Offset /ET.	Thickness Rim	Disc	Model No.
ST175/80R13	Trailer	TL	6	177x610mm	615/545	350/50	80km/h	4.5Jx13	4,5,6	14.5	101.6/114.3	68/72/81/84	0	2.75	4	775251706
ST175/80R13	Trailer	TL	8	177x610mm	730/650	350/50	80km/h	4.5Jx13	4,5,6	14.5	101.6/114.3	68/72/81/84	0	2.75	4	775251707
S185/80R13	Trailer	TL	6	188x620mm	670/580	350/50	80km/h	4.5Jx13	4,5,6	14.5	101.6/114.3	68/72/81/84	0	2.75	4	775251708
S185/80R13	Trailer	TL	8	188x620mm	775/690	350/50	80km/h	4.5Jx13	4,5,6	14.5	101.6/114.3	68/72/81/84	0	2.75	4	775251709
ST205/75R14	Trailer	TL	6	205x664mm	800/710	350/50	80km/h	5.5Jx14	4,5,6	15	114.3	81/84	0	3	5	775251710
ST205/75R14	Trailer	TL	8	205x664mm	975/850	350/50	80km/h	5.5Jx14	4,5,6	15	114.3	81/84	0	3	5	775251711
ST215/75R14	Trailer	TL	6	216x678mm	850/750	350/50	80km/h	6Jx14	4,5,6	15	114.3/139.7	81/84	0	3	5	775251712
ST205/75R15	Trailer	TL	6	203x689mm	825/730	350/50	80km/h	5Jx15	4,5,6	15	114.3/139.7	81/84/108.7	0	3.5	5	775251713
ST205/75R15	Trailer	TL	8	203x689mm	975/850	450/65	80km/h	5Jx15	4,5,6	15	114.3/139.7	81/84/108.7	0	3.5	5	775251714
ST225/75R15	Trailer	TL	8	223x719mm	1150/1000	450/65	80km/h	6Jx15	4,5,6	14.5	114.3/139.7	81/84/108.7	0	3	5.5	775251715
ST225/75R15	Trailer	TL	10	223x719mm	1280/1120	550/80	80km/h	6Jx15	4,5,6	14.5	114.3/139.7	81/84/108.7	0	3	5.5	775251716
ST225/90R15	Trailer	TL	14	220x808mm	1800/1600	550/80	80km/h	6Jx16	4,5,6	17	139.7/165.1	108.7/130.8	0	4	6	775251717
ST235/80R16	Trailer	TL	10	235x782mm	1550/1360	550/80	80km/h	6Jx16	4,5,6,8	17	139.7/165.1	108.7/130.8	0	4	6	775251718
ST235/80R16	Trailer	TL	12	235x782mm	1800/1650	600/95	80km/h	6Jx16	4,5,6,8	17	139.7/165.1	108.7/130.8	0	4	6	775251719
ST235/85R16	Trailer	TL	10	235x782mm	1650/1450	550/80	80km/h	6Jx16	4,5,6,8	17	139.7/165.1	108.7/130.8	0	4	6	775251720
ST235/85R16	Trailer	TL	12	235x806mm	1800/1600	660/95	80km/h	6Jx16	4,5,6,8	17	139.7/165.1	108.7/130.8	0	4	6	775251721
ST235/85R16	Trailer	TL	14	235x806mm	1815/1665	660/95	80km/h	6Jx16	4,5,6,8	17	139.7/165.1	108.7/130.8	0	4	6	775251722
ST235/85R16	Trailer	TL	16	235x806mm	2060/1800	660/95	80km/h	6Jx16	4,5,6,8	17	139.7/165.1	108.7/130.8	0	4	6	775251723
ST225/90R16	Trailer	TL	14	220x808mm	1800/1600	830	110km/h	6Jx16	4,5,6,8	17	139.7/165.1	108.7/130.8	0	4	6	775251724



# Snow removal Moto Graders



**TU201 TU202**

Size	TT/TL	Rim	Pattern	TRA Code	Load Speed Index	Star Rating	Tread Depth (mm/32ND)	Overall Diameter (mm/inch)	Section Width (mm/inch)	Inflation Pressure (KPA/PSI)	Loading Capacity (Kg/Lbs)	Speed (Km/mph)
340/80R18	TL	W11	TU202	-	143A8/136B	-	20 25	1001 39.4	343 13.5	375 54	2725/2240 6005/4940	40/50 24/30
335/80R20	TL	W10	TU202	-	147A2/136B	-	20 25	1044 41.1	333 13.1	375 54	3075/2240 6780/4940	10/50 6/30
405/70R20	TL	DW13	TU202	-	155A2/143B	-	25 31	1076 42.4	407 16.0	375 54	3875/2725 850/6005	10/50 6/30
405/70R24	TL	DW13	TU202	-	158A2/146B	-	24 30	1178 46.4	407 16.0	375 54	4250/3000 9370/6610	10/50 6/30
14.00R24	TL	8.00TG	TU202	G-2	155A8	★★	25 31	1350 53.1	360 14.2	450 65	3875 8540	40 24
15.5R25	TL	12.00/1.3	TU202	E-3/L-3	160B/176A2	★★	25 31	1275 50.2	395 15.6	525/650 76/94	4500/7100 9920/15700	50/10 30/6
17.5R25	TL	14.00/1.5	TU201	E-3/L-3	167B/182A2	★★	28 35	1350 53.1	445 17.5	525/650 76/94	5450/8500 12000/18700	50/10 30/6
20.5R25	TL	17.00/2.0	TU201	E-3/L-3	177B/193A2	★★	31 39	1490 58.7	520 20.5	525/650 76/94	7300/11500 16100/25400	50/10 30/6
23.5R25	TL	19.5/2.5	TU201	E-3/L-3	185B/201A2	★★	34 43	1615 63.6	595 23.4	525/650 76/94	9250/14500 20400/32000	50/10 30/6
650/65R25	TL	19.5/2.5	TU202	E-3/L-3	180B/200A2	★★	38 48	1480 58.3	640 25.2	425/625 62/91	8000/14000 17600/30900	50/10 30/6
750/65R25	TL	24.00/3.0	TU202	E-3/L-3	190B/209A2	★★	43 54	1610 63.4	755 29.7	425/625 62/91	10600/18500 23400/40800	50/10 30/6

## Also available TBR tires on snow



**BT389 GL718A GL718D**

11R22.5	16PR	BT389
11R24.5	16PR	BT389
6.50R16LT	12PR	GL718A
7.00R16LT	14PR	GL718A
275/75R22.5	16PR	GL718D
295/80R22.5	16,18PR	GL718D



# Military Vehicles

If you're looking for tires and wheels for military trucks, desert trucks, all terrain tires, off the road tires, Unimog, then you've come to the right place. We have a wide variety of options that are sure to meet your needs.



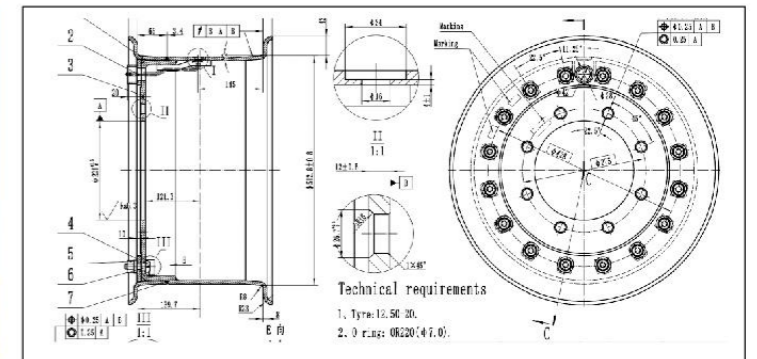
**AR177 AR188 GL072A GL081A GLF01 GLF02 GLR30 GLR302 R307TANLI TUM100TANLI**

Tyre Size	Play rating	Load index	Load index
"445/85R20 (15.5R20)"	16	168J	GL073A
"425/95R20 (16.00R20)"	20	175B	GLO73A(R3)
335/80R22	18	152K	GL 73A
14.00R20	20	5164/D161	GLO73A+
16.00R20	22	5174/D171	GLO73A+
16.00R20	22	5174/D171	GL079A
395/85R20	22	169J	GL079A
395/85R22	20	168G	GL079A
445/85R22	22	178G	GL079A
445/65R22.5	20	169K	GL689A
445/65R22.5	20	168K	GL079A
445/65R22.5	22	171J	GL079A
16.00R20	18	S173/D170	GL079A+
14.00R20	18	S161/D158	GL081A
445/45R19.5	22	160J	GL251T
385/55R22.5	20	160K	GL252T
435/50R19.5	20	160J	GL251T
445/50R22.5	20	161K	GL251T
540/70(21L)R24		IND 161A8	R-4E



## Also bias tires for Military trucks

- \*14.00-20
- \*13.00-18
- \*12.5-20



MULTISTAR Military rim assembly 20-11.00/1.7

# Rubber tracks

We make track buying easy – Just let us know the machinery name and model

Multistar offers an extensive and ever-growing range of premium quality rubber tracks for almost every make and model, makers like Cat, John Deere, Case, Versatile, Komatsu, Kubota, Bobcat, JCB, Hitachi, Yanmar and many more. Applications covers Tractor, Combine, Grain Cart, Skid steer, Compact Track loaders, mini-excavators, etc.

## Benefits & Features

- High-performance maximizes drive lug life in high-pull/draw bar applications
- Forged & Heat treated links for greater stability and support.
- Fully-molded tread and drive lugs for greater durability

## Agricultural Rubber Tracks

Brand	Model	Width Inches	Track Size MM
Cat Challenger	65/75/85/95	25	PI 635x152.4x57
		30	PI 762x152.4x57
		36	PI 915x152.4x57
Agco Challenger	MT700	25	635x152.4x58
		30	762x152.4x58
Agco Challenger	MT765E	18	457x152.4x58
		30	762x152.4x66
John Deere	8000T	25	635x152.4x54
		30	762x152.4x54
John Deere	8RT	25	635x152.4x59
		30	762x152.4x59
John Deere	9000T	30	762x152.4x63
		36	915x152.4x63
John Deere	9620RT	36	915x152.4x65
		30	762x152.4x65
Case 340 /Case 600	9RT	30	762x152.4x65
		36	915x152.4x65
Versatile Delta	580DT	30	762x152.4x42
		36	914x152.4x42
Versatile Delta	620DT	36"	915x152.4x42



## 30" Versatile Delta track

Track Width:	30"
Length:	252"
Tread Bar Quantity:	84
Tread Bar Height:	51mm
Tip Width:	1.7"
Tread Bar Pitch:	6.0"
Guide Lug Quantity:	42
Guide Lug Length:	4.2"
Carcass Ply:	3.0
Carcass Thickness:	35.0mm
Main Cable:	5.4mm
Weight:	1154.0lb



# INFORMATION OF TYRES

## LOAD INDEX

LI	kg	LI	kg	LI	kg	LI	kg	LI	kg	LI	kg
30	106	54	212	78	425	102	850	126	1700	150	3350
31	109	55	218	79	437	103	875	127	1750	151	3450
32	112	56	224	80	450	104	900	128	1800	152	3550
33	115	57	230	81	462	105	925	129	1850	153	3650
34	118	58	236	82	475	106	950	130	1900	154	3750
35	121	59	243	83	487	107	975	131	1950	155	3875
36	125	60	250	84	500	108	1000	132	2000	156	4000
37	128	61	257	85	515	109	1030	133	2060	157	4125
38	132	62	265	86	530	110	1060	134	2120	158	4250
39	136	63	272	87	545	111	1090	135	2180	159	4375
40	140	64	280	88	560	112	1120	136	2240	160	4500
41	145	65	290	89	580	113	1150	137	2300	161	4650
42	150	66	300	90	600	114	1180	138	2360	162	4750
43	155	67	307	91	615	115	1215	139	2430	163	4875
44	160	68	315	92	630	116	1250	140	2500	164	5000
45	165	69	325	93	650	117	1285	141	2575	165	5150
46	170	70	335	94	670	118	1320	142	2650	166	5300
47	175	71	345	95	690	119	1360	143	2725	167	5450
48	180	72	355	96	710	120	1400	144	2800	168	5600
49	185	73	365	97	730	121	1450	145	2900	169	5800
50	190	74	375	98	750	122	1500	146	3000	170	6000
51	195	75	387	99	775	123	1550	147	3075	171	6150
52	200	76	400	100	800	124	1600	148	3150	172	6300
53	206	77	412	101	825	125	1650	149	3250	173	6500

## SPEED CATEGORY

SPEED SYMBOL	A1	A2	A3	A3	A4	A5	A6	A7	A8	B	D	F	J	K
SPEED(km/y)	5	10	15	15	20	25	30	35	40	50	65	80	100	110

## PRESSURE UNITS CONVERSION TABLE

kpa	100	150	200	250	300	350	400	450	500	550	600	650	700	750	800	850	900	950	1000	1050
bar	1.0	1.5	2.0	2.5	3.0	3.5	4.0	4.5	5.0	5.5	6.0	6.5	7.0	7.5	8.0	8.5	9.0	9.5	10.0	10.5
p.s.i.	15	22	29	36	44	51	58	65	73	80	87	94	102	109	116	123	131	138	145	152

## UNITS CONVERSION TABLE

LENGHT	MASS	PRESSURE
1 millimeter (mm)= 0,3937'	1 pound (lb)=0,4536 kg	1 p.s.i.(lb/in <sup>2</sup> )=6,895 kPa
1 inch (")= 25,4 mm=0,0254 m	1 kilogram (kg)= 2,205 lb	1 kg/cm <sup>2</sup> =98.066 kPa
1 meter (m)= 3,281 ft		1 bar= 100 kPa
1 foot (ft)= 0,3048 m	VOLLIME	
1 kilometer (km)= 0,6214 mile	1 iter (l)=0.21 gallon	-
1 mile = 1609 m=1.609 km	1 imperial gallon (imp.ga) = 4,55 l	-

# The world of WHEELS

Multistar tires and wheels



All MULTISTAR wheels are designed and studied using computer simulation (Finite Element Analysis), with field experience then confirming rim capabilities. Main benefits are strength and durability, easier wheel change and tyre fitting, reduced weight and performance under challenging load capacity.

Highly competitive and flexible steel wheel manufactures with certified OEM quality standards for low or high volumes in global.

MULTISTAR wheels have a well-proven protective paint finish as standard. This comprises an electro-coat primer and high quality top coat.

Standard & common spec wheel rims for implements and flotations are kept on the shelf, shipment ex stock be available.

## WHEEL RANGE

### MULTISTAR WHEEL PORTFOLIO

For Mining, Construction/Earthmover, Port/forestry, farms, Implement and flotations, Material Handlers, forklift, Truck/Bus, Trailer, Lawn and Gardens, etc

Width	Dia	Wheel Size	Type of wheel	Applications	Bolt Hole NO.	Bolt Hole (EUWA)	Center Hole (mm)	P.C.D (mm)	Offset Inset (mm)	Net Weight (Kg)	Load Capacity (Kg)	Reference speed (km/h)	Knirring	Wheel qty per pallet (pieces)
3	8	3.00D-8	Split Wheels	Forklift	6	M12	80	120	0	3.6	1,211	40	No	144
7	8	8x7.0	Two pieces	Turf, Lawn	5	15/18	72	114.3	0		425	40	No	475
5	13	13x5.0J	(x) Fixed wheel	Car	5	16/20	67	112	33	6.4	725	190	No	63/72
8	15	15x8	(x) Fixed wheel	Implement	8	M18	152.4	203.2	28.5	12.8	1,500	25	No	60/90
13	15.5	15.5xAG13.00TH2	(x) Fixed wheel	Implement	6	A2 = B18ES32	161	205	-15	24.6	2,900	40	No	12/18
13	20	13 x 20	(x) Fixed wheel	Construction Machinery	8	M22	221	275	31	38.2	3,900	40	No	12
18	21	21-18.00/1.5 3P	(-) Multi piece 3p	Construction Machinery	10	M22	286	335	16	98.6	7,257	40	No	6
11.75	22.5	22.5x11.75	(x) Fixed wheel	Commercial	10	M20	281	335	0	51.5	4,500	40	No	12
24	22.5	22.5xAG24.00 TH2	(x) Fixed wheel	Flotation	10	M18	220	285.75	-60	82.6	5,800	65	No	4/8
12	24	W12 x 24	Adjustible	Tractor	8	M14	150.1	200	-	38.6	-			12
14	24	24xDW14L	(x) Fixed wheel	Tractor	8	M20	221	275	31	50.0	4,625	40	Yes	9
22	25	25-22.00/3.0 5P	(-) Multi piece 5p	Mine	23	B26ES44.4	369.1	422.275	7.62	243.2	13,598	40	Yes	3
27	29	29-27.00/3.5 5P	(-) Multi piece 5p	Construction Machinery	36		581.5	518	275.51	406.0			Yes	3
15	30	DW15L x 30	Adjustible	Tractor	8	M18	152.4	203.2	-	74.3	-		Yes	4
28	30.5	30.5xAG28.00 TH2	(x) Fixed wheel	Flotation	10	A3 = B22ES36	281	335	-50	139.3	8,500	65	No	6
27	32	32xDW27B	(x) Fixed wheel	Combines	10	M18	281	335	38	145.0	7,200	65	Yes	6/ 8/ 4/ 2
250	480	480x250	Base Band	Forklift	12	M14	265	300	-45	47.9	3,740	40	No	12
15	38	38xDW15L	Adjustible	Tractor	8	M18	150.1	203.2	-	110.7	-		Yes	8
23	42	42xDW23B	(x) Fixed wheel	Tractor	12	M20	366	415	17	204.0	7,500	40	Yes	4
12	46	46xW12	Adjustible	Row Crop	10	A3 = B22ES36	281	335	-195				No	6
19.5	49	49-19.50/4.0 5P	(-) Multi piece 5p	Mine	20		1035.05		32	690.0	36,500	50	Yes	3
29	57	57-29.00/6.0 7P	(-) Multi piece 7p	Mine	57		954	1004	26.6	1,983.0	54,000	65	Yes	1
44	63	63-44.00/5.0 5P	(-) Multi piece 5p	Mine	56		1376.36	1310.33	62.36	3,011.0	80,000	50	Yes	1

# Wheels for Mining and Earthmovers

## WHEELS FOR SURFACE MINING

### UP TO 63"

MULTISTAR takes great pride in our ability to manufacture and supply full machined, heavy duty wheels for all extreme industrial applications where safety and reliability are paramount.

We also supply the rim components ie: Rim Base, Bead Seat Band, Side Ring, Lock Ring, Gutter Section, Back Section, and Centre Bands.

### Best Sellers

Models	Wheel size	Draw. Code
Komatsu HD830E	57-29.00/6.0	57295008
Komatsu HD730E	57-27.00/6.0	57275005
Komatsu HD785-7	49-19.50/4.0	49195008
Komatsu HD465-7	35-17.00/3.5	35175026
CAT777	49-19.50/4.0	49195013
CAT785	51"-24.00/5.0	51245004
CAT14G	24"-10.00/1.7	24103088
CAT14H	25-17.00/1.7	25173060
	25-10.00/1.5	25103001

25-10.00/1.5 25103001 for Hauling Truck Pama Adaro



### Also available for

Models
Komatsu HD465/605/HM400/WA800/HD1500/GD705/GD525
Komatsu WA250/320/380/470/500/600
CAT773E/789/992G/745B/930/966/972/980/930H
Volvo A40D/A25D/L70E/L90
CAT797
Leibherr T282 63"
Hitachi EH5000 57"
XCMG LW300KN / ZL50GN



19" : 19-11.00/1.4
20" : 20-7.50/1.7, 20-8.0/1.7, 20-8.5/1.7, 20-9.00/1.7, 20-10.00/1.7, 20-10.00/1.88, 20-10.00/2.0, 20-11.00/1.7, 20-12.00/2.0, 20-13.00/1.7, 20-13.00/2.0, 20-14.00/2.0, 20-15.00/1.7, 20-15.00/2.0, 20-20.5/1.7, 20-26.00/1.7,
21" : 21-11.25/2.0, 21-18.00/1.5, 21-17.00/2.0, 21-18.00-2.0
22" : 22-17.00/2.0
23" : 23-11.00/1.5, 23-18.00/2.0
24" : 24-8.00/1.7, 24-8.50/1.7, 24-10.00/1.7, 24-10.00/2.0, 24-11.25/2.0, 24-12.00/1.7, 24-13.00/1.7, 24-10.00/1.8, 24-15.00/1.0, 24-16.00/1.1
25" : 25-8.5/1.5, 25-9.5/1.5, 25-8.50/1.3, 25-9.50/1.7, 25-10.00/1.5, 25-11.00/1.5, 25-14.00/1.5, 25-11.00/1.7, 25-11.25/2.0, 25-11.00/1.7, 25-11.25/2.0, 25-13.00/2.5, 25-14.00/2.0, 24-15.00/3.0, 25-17.00/2.0, 25-19.5/2.0, 25-19.5/2.5, 25-22.00/1.84, 25-22.00/3.0, 25-25.00/3.5, 25-36.00/1.5, 25x12.00DC, 25x13.00DC
26" : 26-16.00/1.1, 26-20.00/1.1
27" : 27-21.50/2.4, 27-23.5/2.5, 27-24.50/2.4
28" : 28-15.00/1.0
29" : 29-17.00/3.5, 29-22.00/3.0, 29-24.00/3.5, 29-25.00/3.5, 29-27.00/3.5
33" : 33-13.00/2.5, 33-17.00/3.5, 33-24.00/4.0, 33-28.00/3.5, 33-32.00/4.5
34" : 34-14.00/1.3, 34-16.00/1.5
35" : 35-15.00/3.0, 35-17.00/3.5, 35-22.00/3.5, 35-27.00/3.5, 35-31.00/4.0
39" : 39-28.00/4.0, 39-32.00/4.5
45" : 45-36.00/4.5
49" : 49-17.00/3.5, 49-19.5/4.0, 49-22.00/3.5
51" : 51-22.00/4.5, 51-24.00/5.0, 51-26.00/5.0, 51-28.00/4.5, 51-40.00/4.5
57" : 57-27.00/6.0, 57-29.00/6.0, 57-32.00/5.0, 57-32.00/6.0, 57-36.00/6.0, 57-44.00/5.0, 57-44.00/6.0, 54-47.0/5.0, 54-47.0/6.0
63" : 63-36.00/5.0, 63-38.00/5.0, 63-41.00/5.0, 63-44.00/5.0

For more information of specification, please see our wheel catalogue in 2023 version.

# Wheels for Mining and Earthmovers

## WHEELS FOR UNDERGROUND MINING

As the world's leading custom wheel supplier, MULTISTAR offers customers a wide variety of upgrades to industry standard and OEM wheels. We can supply wheels utilizing stronger lock rings, heavier flanges and an Integral gutter disc for all extreme applications – including underground mining.

### Best Sellers

Rim Size 29-27.00	Tire Size 33.25R29
Sandvik TH540, CAT AD45B	
Rim Size 29-25.00 Forged Gutter Disc	Tire Size 29.5R29
CAT AD45B, R2900G, Sandvik LH517	
Rim Size 25-22.00	Tire Size 26.5R25
CAT AD30 / R1700G, Sandvik LH514 / TH540, Atlas Copco MT436, Bell B30L / B35L	
Rim Size 33-28.00 Forged Gutter Disc	Tire Size 35/65R33
Sandvik LH621 / LH663, Atlas Copco MT5010 MT5020 MT6020, CATAD55 / AD60 / 988G / 988H / 834G / 834H	



### Key Features

#### Integral Gutter Section or Integral Gutter Disc

A Single, machined steel forging incorporating the wheel disc and gutter, eliminate welds and providing superior resistance to stud breakage and disc fractures, and enhancing safety for the applications.



## SERVICING ON OEM BRANDS IN UNDERGROUND AND SURFACE MINING

Robbins  
Liebherr  
Bell Hitachi  
Volvo  
JCB Hyundai XCMG CRCHI  
Mitsubishi Komatsu John Deere Caterpillar  
CNH Terex  
WirthNHI Kawasaki  
Atlas Copco  
Kalmar Joy Global  
Letourneau/P&H  
Tianhe  
BOMAG Belaz  
Taylor Hyster  
Reinke TianyeTolian  
Ishikawajima-Harima  
Brandt DOOSAN  
SANDVIK Fletcher

MULTISTAR wheels proudly serve **40+ RENOWNED OEMs & MINING COMPANIES**

# Wheels for Mining and Earthmovers

## WHEEL FOR CONSTRUCTION/EARTHMOVER

MULTISTAR wheels' full range of wheels are compatible with haulers, loaders, dozers, scrapers, skid steers, and graders from all makes and all models. Further customization options such as disc offsets and bolt hole patterns are available.

### Rigid/Articulated Dump Truck

Load capacity on these trucks run from 40 to 400 ton.

Rim Size	Recommended Tire	Rim Size	Recommended Tire
25-13.00/2.5	18.00-25	49-19.50/4.0	27.00R49
25-19.00/2.5	23.5-25	51-22.00/4.5	30.00R51
25-22.00/3.0	26.5-25	51-24.00/5.0	33.00-51
25-25.00/3.5	29.5-25	51-26.00/5.0	36.00-51
29-25.00/3.5	29.5-29	57-27.00/6.0	37.00R57
29-27.00/3.5	33.25-29	57-29.00/6.0	40.00R57
33-28.00/3.5	33.5-33	57-32.00/6.0	46/90R57
45-36.00/4.5	45/65R45	63-36.00/5.0	53/80R63
49-17.00/3.5	24.00-49	63-44.00/5.0	59/80R63



### Grader

Rim Size	Recommended Tire
24-9	13.00-24TG
24-10.00VA	14.00-24TG
24-10.00VA	16.00-24TG
25-12.00/1.3	15.5-25
25-14.00/1.5	17.5-25
25-17.00/1.7	20.5-25

### Loader and Dozer

Rim Size	Recommended Tire
25-11.25/2.0	16.00-25
25-13.00/2.5	18.00-25
25-12.00/1.3	15.2-25
25-14.00/1.5	17.5-25
25-17.00/1.7	20.5-25
25-19.50/2.5	23.5-25
25-22.00/3.0	26.5-25
25-25.00/3.5	29.5-25
29-25.00/3.5	29.5-29
33-28.00/3.5	35/65-33
35-27.00/3.5	33.25-35
39-32.00/4.5	40/65-39
45-36.00/4.5	45/65-45

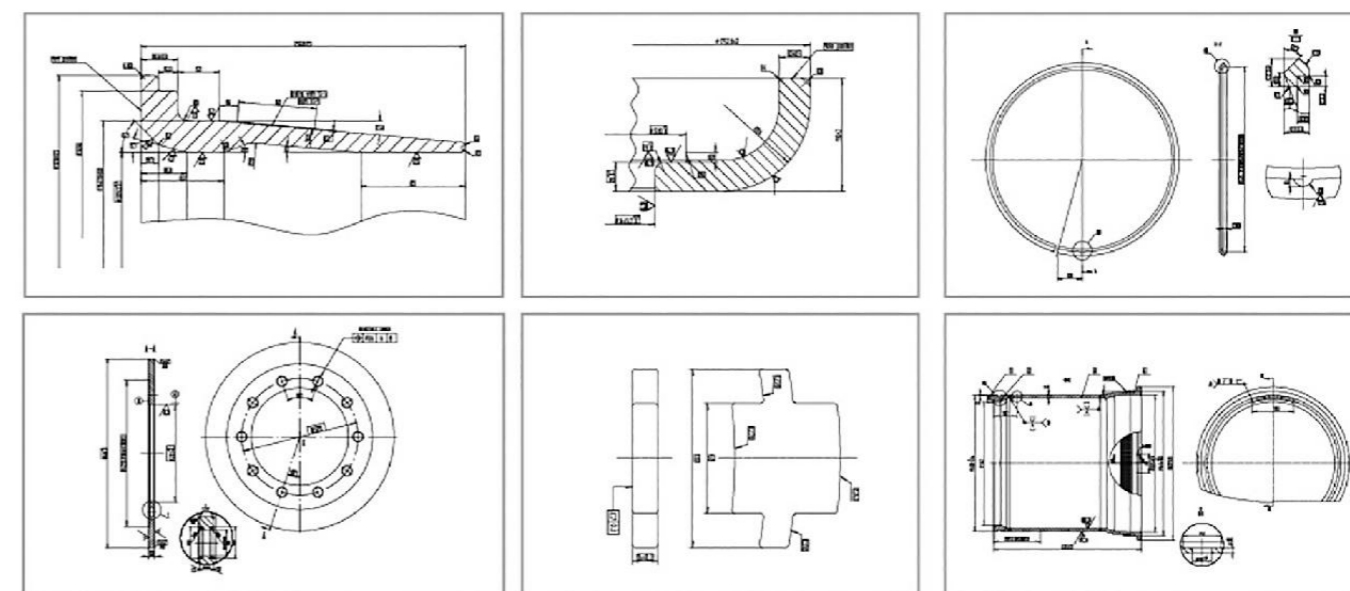
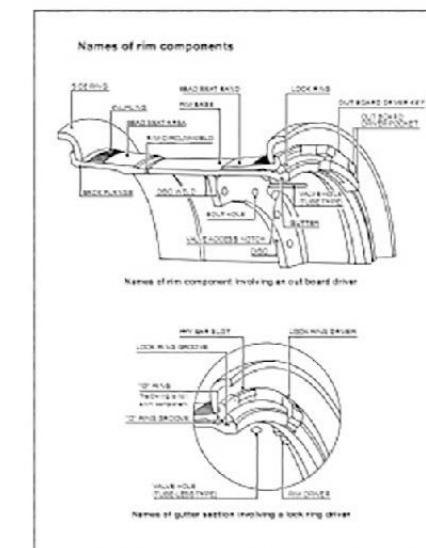
### Scraper

Rim Size	Recommended Tire
25-19.50/2.5	23.5-25
25-22.00/3.0	26.5-25
33-13.00/2.5	18.00-33



## Wheel components

Component	Rim Diameter	Weight(kg)
3-Piece Rim	20	15.3
	24	8.6
	24	16.6
	25	16
	25	24.8
	25	19.1
Components Side Flange	32	23.1
	20	2
	24	24
	24	24
	25	2.5
	25	2.5
3-Piece Rim Components Lock Ring	32	2.6
	25/1.5	10
	25/2.0	12
	25/2.5	20
	25/3.0	25
	25/3.5	30
	29/3.0	28
	29/3.5	35
	33/2.5	28
	33/4.0	39
	33/4.5	54
	35/3.0	63
	35/3.0	35
	35/3.5	42
	35/4.0	58
	39/4.0	65
	39/4.5	74
45/4.5	85	
49/3.5	73	
49/4.0	121	
51/4.5	111	
51/5.0	163	
57/6.0	205	
5-Piece Rim Components Lock Ring	25	5.5
	29	6.4
	33	7.3
	35	7.8
	39	8.8
	45	9.5
	49	13.5
	51	42.9
	57	48
	63	52.6
5-Piece Rim Components Bead Seat Bands	25	26
	25	32
	29	36
	33	42
	35	45
	39	50
	45	58
	49	74
	51	137
	57	153
63	227.7	





# Wheels for Tractors/Combines

- MULTISTAR is a leading supplier of single piece fixed and adjustable wheels suitable for tractors, combines, towed agricultural implements and trailed applications, with a wide range includes products designed for driven and trailed applications.
- The product range of MULTISTAR agricultural wheels includes diameters from 10" to 54" and widths from 3.5" to 36" in standard W, DW, TW, DDW and Row Crop rim profiles.
- Irrigation wheels are available in diameters from 24" to 38" and widths from 8" to 15".



10"	10x3.50
12"	12x4J,12x5J,12x7.00,12x8.50,12x10.50
13"	13x4J,13x4.5J
14"	14x4.5J,14x6.00,14x7.00
15"	15x4J,15x5J,15-6.00G,15x6LB,15x7,15x8LB,15x10LB,15x13LB
16"	16x4.00E,16x4.50E,16x5.00F,16x5.50F,16x5.50K,16x6.0K,16x6LB,16x6.5,16xW7,16x8LB,16x8.00,16xW8,16xW9,16x9.00,16x11.00
17.5"	17.5x6.75,17.5x10.5,17.5x11.75
18"	18x5.50F,18x9.00,18xW9,18x11.00,18x13.00
19.5"	19.5x6.75,19.5x7.50,19.5x8.25,19.5x11.75,19.5x13.00,19.5x14.00
20"	20x5.50F,20xW7,20xW8,20xW9,20xW10,20x11,20xW11,20xW13,20xW14L
24"	24xW7,24xW8,24x8,24x9.00GR,24xW9,24xW10,24xW11,24xW12,24x12,24xDW12,24xW13,24xDW13L,24xW14,24xDW14L,24xW15L,24xDW15L,24xW16L,24xDW16L,24xDW18L,
25"	25x13.00,25x36.00
26"	26xW11,26xW12,26xW13,26xW14,26xW15,26xW16,26xDW16,26xDW20,26xDW25
28"	28xW8,28xW9,28xW10,28xW11,28xW12,28xW13,28xW14,28xW15L,28xW16L,28xW18L,28xDW18L,28xDW20
30"	30xW10,30xW12,30xW13,30xW14,30xW15L,30xDW15L,30xW16,30xDW16L,30xDW18L,30xDW20, 30xDW23
32"	32xW7,32xW8,32xW10,32xW11,32xW12,32xDW20,32xDW21,32xDW27,32xDW30, 32xDW36
34"	34xDW10, 34xW13,34xW14L, 34xW15L,34xDW15L,34xW16L,34xDW16L,34xTW16L,34xW18L,34xDW18L,34xTW18L,34xDW20L,34xDW23
36"	36xW7,36xW8,36xW9,36xW10,36xW11,36xW12
38"	38xW9,38xW10,38xW11,38xW12,38xW13,38xW14,38xW14L,38xDW14L,38xW15L,38xDW15L,38xW16L,38xDW16L,38xTW16L,38xDW18L,38xTW18L,38xDW20B,38xDW21B,38xDW23B,38xDW25,38xDW27,38xDW28
40"	40xW8
42"	42xW8,42xW10,42xW12,42xW15L,42xW16L,42xDW16L,42xW18L,42xDW18L,42xDDW18L,42xDW20B,42xDW23B,42xDW27,42xDW30
44"	44xW8,44xW10
46"	46xW10, 46xW12,46xDW16,46xDW18,46xDW28B
48"	48xW8,48xW10,48xW12
50"	50xW10,50xW12,50xDW15,50xW16
52"	52xW10
54"	54xW8,54xW10,54xW12

For more information of specification, please see our wheel catalogue in 2023 version.

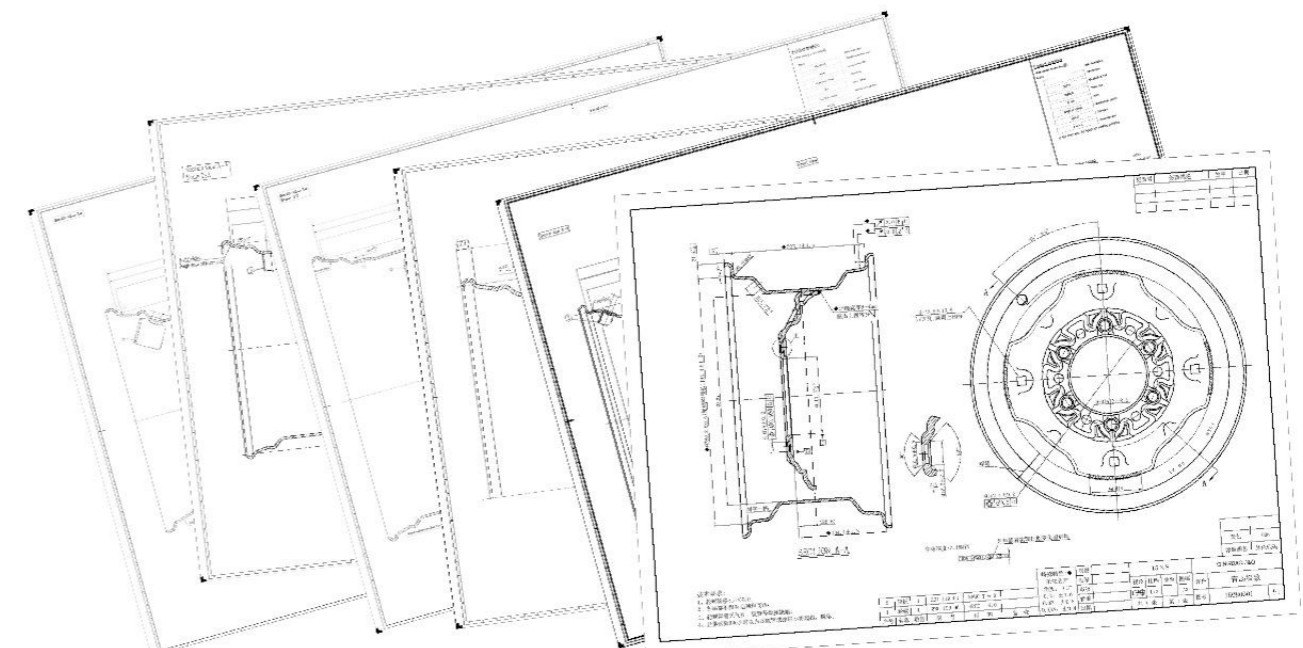
# Wheels for Implements and Flotations

12"	12x4J,12x5J,12x7.00,12x8.50,12x10.50
15"	15x4J,15x5J,15-6.00G,15x6LB,15x7,15x8LB,15x10LB,15x13LB
15.3"	15.3x9.00
15.5"	15.5x13.00
16"	16x4.00E,16x4.50E,16x5.00F,16x5.50F,16x5.50K,16x6.0K,16x6LB,16x6.5,16xW7,16x8LB,16x8.00,16xW8,16xW9,16x9.00,16x11.00
16.1"	16.1xW11, 16.1xW14,16.1xW16
16.5"	16.5x8.25,16.5x9.75,16.5x12.00
17"	17x13.00,17x16.00
17.5"	17.5x6.75,17.5x10.5,17.5x11.75
18"	18x5.50F,18x9.00,18xW9,18x11.00,18x13.00
19"	19x3.00
19.5"	19.5x6.75,19.5x7.50,19.5x8.25,19.5x11.75,19.5x13.00,19.5x14.00
20.5"	20.5x16.00,20.5x18.00
22.5"	22.5x7.50,22.5x8.25,22.5x9.00,22.5x11.75,22.5x13.00,22.5x14.00,22.5x16.00,22.5x20.00,22.5x24.00
24.5"	24.5x8.25,24.5x11.75,24.5x13,24.5x15
26.5"	26.5x16.00,26.5x20.00,26.5x24.00,26.5x28.00
30.5"	30.5x20.00,30.5x24.00,30.5x28.00
32"	32xW7,32xW8,32xW10,32xW11,32xW12,32xDW20,32xDW21,32xDW27,32xDW30, 32xDW36

For more information of specification, please see our wheel catalogue in 2023 version.

**Integration of innovative truck design elements**

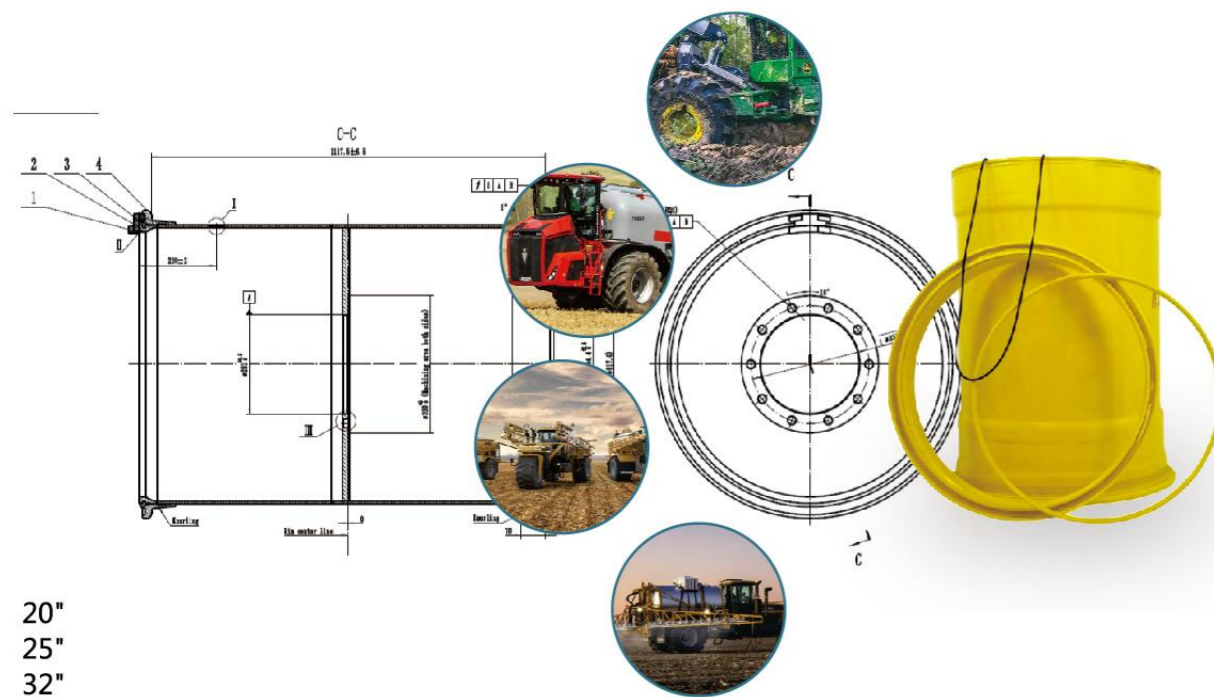
- Optimized 45° rim flange shape
- optimized rim profile stiffness for high speed running vehicles
- Improvement of tyre mounting-less risk for internal tyre damages
- (possibility to mount standard H530 balancing weights for high speed runners)



# Terra Wheels

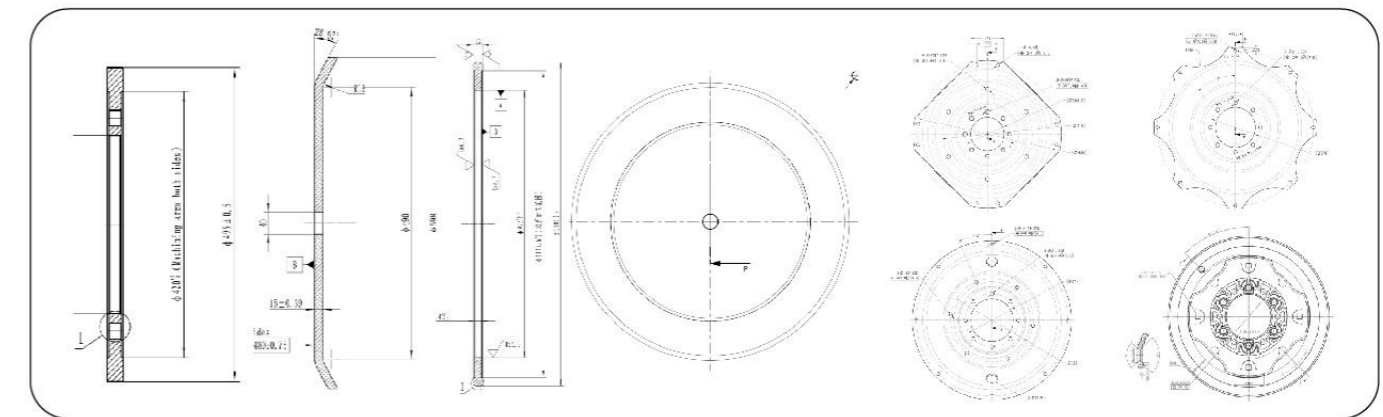
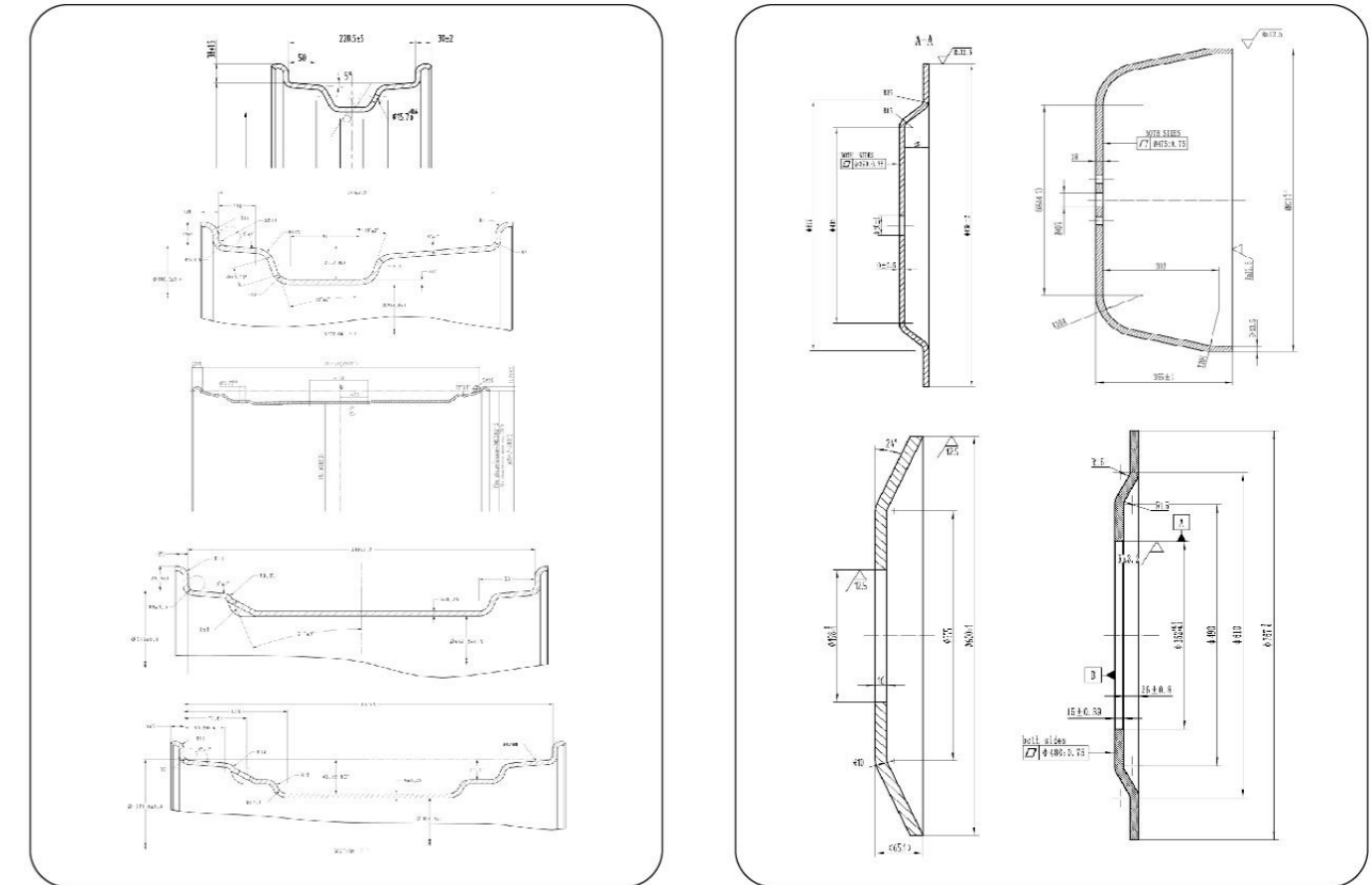
- From agricultural spreaders and sprayers, to combines, tractors and off-highway trucks, MULTISTAR flotation wheels can help you float in soft conditions.
- 20- 25-, and 32-inch diameter Terra rims or complete wheels are available
- Demountable rims for cast-spoke centers are available.
- One- and Multi-piece blank rims, blank discs for Terra are available
- A wide variety of replacement parts, including lock rings, flanges, BSB, valves, and o-rings are available.
- Standard wheels are powder-coated for a long-lasting finish
- Custom-built flotation wheels are available.

Dia.	Rim Size	Fitted tyre	Stud Holes No.	Stud Holes Dia.	PC Dia.	Center Hole Dia.	Offset/ET.	Stud Holes Rim Disc	Model No.
20"	20-20.5/1.7	48x25.00-20	10	126	285.75	220	36.6		20230701
	20-20.5/1.7	48x25.00-20	10	30	285.75	220	36.6		20230702
	20-20.5/1.7	48x25.00-20	10	26	335	281	0		20230703
	20-20.5/1.7	48x25.00-20	10	26	335	281	48		20230704
	20-20.5/1.7 rim base	48x25.00-20							20230705
	20-26.00/1.7	48x31.00-20	10	26	285.75	220	106.3		20230706
	20-26.00/1.7	48x31.00-20	10	30	285.75	220	106.3		20230707
	20-26.00/1.7	48x31.00-20	10	26	335	281	0		20230708
	20-26.00/1.7	48x31.00-20	10	26	335	281	100		20230709
	20-26.00/1.7 rim base	48x31.00-20							20230710
25"	25-36.00/1.5	66x43.00-25	10	27	425	371	85		20230711
	25-36.00/1.5	66x43.00-25	19	24	500	448	70	22	20230712
	25-36.00/1.5	66x43.00-25	16	24	510	446	30	22	20230713
	25-36.00/1.5	66x43.00-25	8	24	250	199	203	20	20230714
	25-36.00/1.5 rim base	66x43.00-25							20230715
32"	32-36.00/1.1	73x44.00-32	10	23	335	281	0		20230716
	32-36.00/1.7	73x44.00-32	10	27	335	281	0		20230717
	32-41.00/1.1	78x45.00-32	10	22	335	281	0		20230718
	32-44.00/1.1	73x50.00-32	10	24	335	281	0		20230719
	32-49.00/1.1	68x60.00-32	10	24	335	281	0		20230720
	32-59.00/1.1	68x70.00-32	10	24	335	281	0		20230721
	32-36.00/1.7 rim base	73x44.00-32							20230722
	32-44.00/1.1 rim base	73x50.00-32							20230723
	32-49.00/1.1 rim base	68x60.00-32							20230724
	32-59.00/1.1 rim base	68x70.00-32							20230725



20"  
25"  
32"

# Bare rims and blank disc/dish for Ag. wheels



- W rim profile • DW rim profile • TW rim profile • H2 rim profile
- We work with materials with thickness up to 60mm



# Port wheels

Our full range of MULTISTAR wheels and rim include products for large forklifts, Container handlers, reach stackers and gantries used in Ports, Intermodal and Mills, saving on downtime and improving safety.

## Rough Terrain Crane

Rim Size	Recommended Tire
25-9.50/1.7CR	14.00-25
25-11.00/1.7CR	16.00-25
25-14.00/1.7CR	17.5-25
25-13.00/2.5	18.00-25
25-17.00/2.0	20.5-25
25-19.00/2.5	23.5-25
25-22.00/3.5	26.5-25
25-25.00/3.5	29.5-25
33-13.00/2.5	18.00-33



## Straddle Carrier

Rim Size	Recommended Tire
25-13.00/2.5	18.00-25
25-15.00/3.0	21.00-25
35-15.00/3.5	21.00-35



**Application:**  
 Straddle carriers, Girder Carriers, Launching Gantries, Wheeled gantry cranes, Container handlers, Reach Stackers  
 RTG Drive/Idler wheels  
 Aircraft Tug, and Shuttle bus

## Wheeled Gantry Crane

Rim Size	Recommended Tire
25-11.25/2.5	16.00-25
25-13.00/2.5	18.00-25
25-15.00/3.0	21.00-25
25-17.00/2.0	20.5-25
25-19.00/2.5	23.5-25
25-22.00/3.0	26.5-25
35-15.00/3.5	21.00-35



## Aircraft Tug

Rim Size	Recommended Tire
24-8.5	12.00-24
25-10.00/1.5	14.00-25
25-11.25/2.0	16.00-25
25-13.00/2.5	18.00-25



## Reach Stacker

Rim Size	Recommended Tire
25-13.00/2.5	18.00-25
25-15.00/3.0	21.00-25
33-13.00/2.5	18.00-33



# Forklift wheels



- MULTISTAR forklift Wheels & Rims adhere to TRA / ETRTO standards and form part of our wide range of products for industrial applications, and they are to suit for Toyota, Mitsubishi, Komatsu, TCM, Nissan, Hyster and Yale, etc., forklift trucks.
- For more detail specifications, please see our wheel rim catalogue in 2023 Version.

Rim Size	Tyre size	Rim Profiles					Split	Base Band
		1 PC	2 PCs	3 PCs	4 PCs			
2.50-8	4.00-8		★			★		
3.00-8	5.00-8/15x4.5-8		★			★		
3.25-8	5.00-8/15x4.5-8		★			★		
3.50-8	5.00-8		★			★		
3.75-8	5.00-8		★			★		
4.33R-8	18X7-8	★	★	★		★		
3.50D-9						★		
4.00E-09	6.00-9	★	★	★	★	★		
5.00S-9	7.00-12		★			★		
6.00E-09	21x8-9	★	★	★	★	★		
5.00F-10	6.50-10	★	★	★	★	★		
6.50F-10	23X9-10	★	★	★	★	★		
4.50E-12	5.50-12		★			★		
5.00S-12	7.00-12	★	★	★	★	★		
	8.25-12							
6.50F-12	8.25-12		★	★	★			
8.00G-12	23x10-12/27x10-12	★	★	★	★			
5.50-15	7.00-15	★	★	★	★			
6.00G-15	7.50-15	★	★	★	★			
6.5-15	7.50-15	★	★	★	★			
7.00T-15	28x9-15	★	★	★	★			
7.50V-15	250-15	★	★	★	★			
8.00V-15	300-15	★	★	★	★			
9.75-15	350/65-15	★	★	★	★			
5.50F-16	6.50-16	★	★	★				
	7.00-16	★	★	★				
6.00G-16	7.50-16	★	★	★				
6.5-16	8.25-16	★	★	★				
7.00T-16	9.00-16	★	★	★				
6.5-20	8.25-20		★	★				
7.00T-20	9.00-20		★	★				
7.50V-20	1000-20		★	★				
8.00V-20	11.00-20		★	★				
8.5-20	12.00-20		★	★				
	14.00-20		★	★				
10.0-20	36*12.5-20		★	★				
11x20		★						
8.00-22	11.00-22		★	★				
8.5-24	12.00-24	★	★	★				
10.0-24	14-24	★	★	★				
420x174							★	
420x250							★	
475x230							★	
475x230							★	
475x255							★	
475x255							★	
480x250							★	
480x250							★	
480x250							★	
480x250							★	
480x250							★	
480x250							★	
480x250							★	
480x250							★	

# Wheels for Commercial truck/trailers

Forged Aluminum MULTISTAR Wheels	
16"	16x5.5J, 16x6K, 16x7.0
17.5"	17.5x6.00, 17.5x6.75
19.5"	19.5x6.00, 19.5x6.75, 19.5x7.50
22.5"	22.5x7.50, 22.5x8.25, 22.5x9.00, 22.5x10.5, 22.5x11.75
24.5"	24.5x8.25

Forged Aluminum MULTISTAR Wheels -Wide base	
22.5"	22.5x12.25, 22.5x13.00, 22.5x14.00

## Available in

- 10H 13.189"(335mm) STUD PILOT/HUB PILOT (BUDD TYPE/UNIMOUNT TYPE)
- 10H 11.250"(285.75mm) STUD PILOT/HUB PILOT (BUDD TYPE/UNIMOUNT TYPE)
- 10H 8.858"(225mm) STUD PILOT/HUB PILOT (BUDD TYPE/UNIMOUNT TYPE)
- 8H 10.827"(275mm) STUD PILOT/HUB PILOT (BUDD TYPE/UNIMOUNT TYPE)
- 8H 8.858"(225mm) STUD PILOT/HUB PILOT (BUDD TYPE/UNIMOUNT TYPE)
- 6H 9.645"(245mm) STUD PILOT/HUB PILOT (BUDD TYPE/UNIMOUNT TYPE)

## Offer:

- Any offset
- Light weight and Heavy load capacity
- 5 year warranty on manufacturing defects (excludes finish)
- Finish: Machined, Polished inside/outside/both sides, and Pro-Bright

Pro-Bright is a proprietary surface finish which penetrates the aluminium, allowing easy clearing with soap and water.



## Steel wheels Tubeless

- 16.5" : 16.5x8.25, 16.5x9.75
- 17.5" : 17.5x5.25, 17.5x6.00, 17.5x6.75, 17.5x7.50, 17.5x8.25, 17.5x9.00, 17.5x11.75, 17.5x13.00, 17.5x14.00,
- 19.5" : 19.5x5.25, 19.5x6.00, 19.5x6.75, 19.5x7.50, 19.5x8.25, 19.5x9.00, 19.5x13.00, 19.5x14.00, 19.5x16.00,
- 20.5" : 20.5x14.00 20.5x16.00 20.5x18.00
- 22.5" : 22.5x6.00, 22.5x6.75, 22.5x7.50, 22.5x8.25, 22.5x9.00, 22.5x11.75, 22.5x13.00, 22.5x14.00, 22.5x16.00, 22.5x20.00, 22.5x24.00
- 24" : 24x8.50
- 24.5" : 24.5x8.25, 24.5x9.00, 24.5x11.75, 24.5x13.00, 24.5x15.00, 24.5x16.00.

- Demountable (Dayton wheel) is available
- Bare rims without disc/centre are available

## Available also:

- HEAVY DUTY TUBE-TYPE WHEELS from 15"-24" in 2 & 3 PC



# Wheels for Car and Trailers



Dia.	Rim Size	Fitted tyre	Stud Holes No.	Dia.	PC Dia.	Center Hole Dia.	Offset/ET.	Thickness		Model No.
								Rim	Disc	
12	12x4	ST145R12	4	φ15	φ100	φ68	0	3.5	5	803406211
	13x4.5	ST175/80R13	4	φ15	φ100	φ68	0	3.5	5	803406212
13	13x4.5	ST175/80R13	5	φ15	φ108	φ75	0	3.5	5	803406213
	13x4.5	ST175/80R13	5	φ15	φ114.3	φ81	0	3.5	5	803406214
	13x5.5	ST185/80R13	5	φ15	φ114.3	φ75	11	3.5	5	803406215
	13x5.5	ST185/80R13	5	φ15	φ108	φ75	0	3.5	5	803406216
	14x5	ST205/75R14	5	φ15	φ108	φ75	5	3.5	5	803406217
14	14x6	ST215/75R14	5	φ15	φ114.3	φ81	0	3.5	5	803406218
	14x6	ST215/75R14	6	φ15	φ139.7	φ108.7	14	3.5	5	803406219
	14x6	ST215/75R14	6	φ15	φ139.7	φ110	8	3.5	5	803406220
	14x6	ST215/75R14	5	φ15	φ120.65	φ84	5	3.5	5	803406221
	14x6	ST215/75R14	5	φ15	φ114.3	φ84	5	3.5	5	803406222
	14x6	ST215/75R14	5	φ15	φ108	φ75	5	3.5	5	803406223
	14x7	ST235/60R14	5	φ15	φ114.3	φ84.3	5	3.5	5	803406224
	15x5	ST205/75R15	5	φ15	φ114.3	φ84	0	3.5	5	803406225
15	15x5	ST205/75R15	5	φ15	φ127	φ84	0	3.5	5	803406226
	15x6	ST225/75R15	6	φ15	φ139.7	φ108.7	0	3.5	5	803406227
	15x6	ST225/75R15	5	φ15	φ114.3	φ84	0	3.5	5	803406228
	15x7	ST235/75R15	5	φ15	φ114.3	φ75	-25	3.5	5	803406229
	15x7	ST235/75R15	5	φ15	φ139.7	φ108.7	100	3.5	5	803406230
	15x7	ST235/75R15	6	φ15	φ139.7	φ110	-3	3.5	5	803406231
	15xB	ST235/75R15	6	φ15	φ139.7	φ111	-20	3.5	5	803406232
	15x8	ST235/75R15	5	φ15	φ114.3	φ84	-26	3.5	5	803406233
	15x10		5	φ15	φ114.3	φ84	-38	3.5	5	803406234
	15x10		6	φ15	φ139.7	φ110	58	3.5	5	803406235
16	16x6	ST235/80R16	6	φ15	φ139.7	φ108.7	0	4	6	803406236
	16x6	ST235/80R16	8	φ15	φ165.1	φ130.8	0	4	6	803406237
	16x7	ST245/75R16	5	φ15	φ150	φ112	0	4	6	803406238
	16x7	ST245/75R16	6	φ15	φ139.7	φ111	13/30	4	6	803406239
	16x8	ST285/75R16	5	φ15	φ150	φ111	0	4	6	803406240
	16x8	ST285/75R16	6	φ15	φ139.7	φ111	14	4	6	803406241
	16x8	ST285/75R16	8	φ15	φ165.1	φ130.8	20	4	6	803406242
	16x10	ST365/75R16	5	φ15	φ150	φ111	0/8	4	6	803406243
	16x10	ST365/75R16	6	φ15	φ139.7	φ111	28	4	6	803406244
	16x10	ST365/75R16	8	φ15	φ165.1	φ130.8	35	4	6	803406245
17	17x8	ST285/75R17	5	φ17	φ150	φ111	0	4	6	803406246
	17x8	ST285/75R17	6	φ17	φ139.7	φ111	25/40	4	6	803406247
	17x9		5	φ17	φ150	φ111	0	4	6	803406248
	17x9		6	φ17	φ139.7	φ111	25/40	4	6	803406249

Finish: BLACK, WHITE, GALVANISED  
Mark: the fitted tyres are also available

# Information of MULTISTAR wheels

## Glossary and information

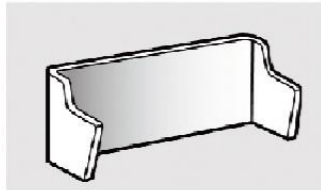
<b>8.00x15,5</b>	Rim 8" in width and 15,5" in diameter.
<b>W12x24</b>	Rim without drop centre.
<b>DW20Ax34</b>	Rim with drop centre a high rim flange (A). The disc is welded into the drop centre.
<b>DW18Lx38</b>	Rim with drop centre a low (L). The disc is welded into the drop centre.

### Valve Guard

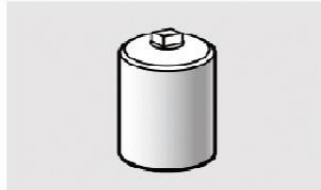
Valve guard is used when there is a risk that the valve will be damaged.



Valve guard, type V1. Normal area of application is on wheels intended for use in agriculture. V1 valve guard fits rims up to 26,5"

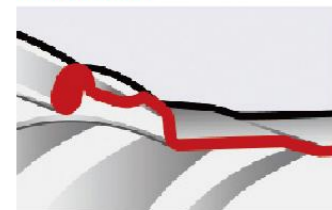


Valve guard, type V2. Fits wheels of 30in diameter and upwards. Its normal area of application is on rims intended for use in agriculture. This type of valve guard is necessary if a Savsjo dual mounting is being used.



Valve guard, type V3. To be used when there is a greater possibility of impact. This style of valve guard fits all forestry and agricultural wheels. Its normal area of application is on forestry and construction equipment.

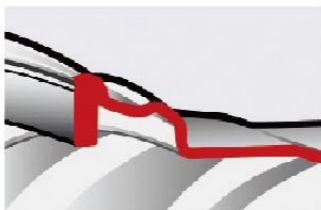
### Reinforcement



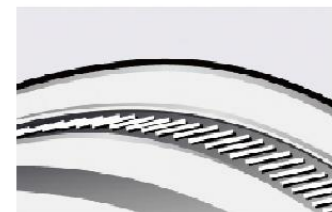
**Round bar reinforcement (R1)**  
This protects the rim edge against impact and damage, and makes it possible for the rim to carry a larger load.



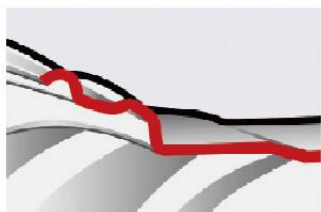
**Box reinforcement (R2)**  
Protects against impact. In addition, the inside of the rim has a design that prevents dirt and mud from collecting and sticking. This reinforcement produces an extremely strong rim - suitable for the toughest jobs.



**Flat bar reinforcement (R3)**  
Protects the edge from impact and damage, this reinforcement can be used in several tough conditions.

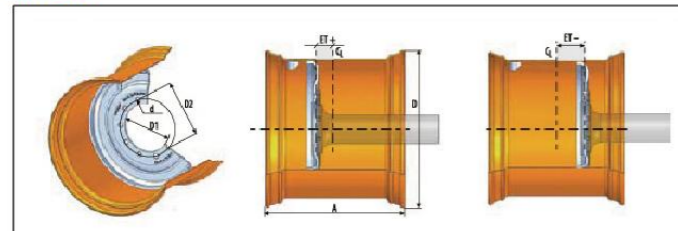


**Knurling**  
The grooved section of the rim where and 15° the tyre bead rests on a 5° rim. The purpose of knurling is to counteract the tendency for the tyre to slip on the rim.



**Hump**  
An extra bend just inside the bead seat. The hump facilitates driving at low air pressure, holding the tyre in place.

### OFFSET



A – szerokość koła \ wheel width \ ширина диска  
 D – średnica koła \ wheel diameter \ диаметр диска  
 D1 – średnica otworu centralnego \ central hole diameter \ диаметр центрального отверстия  
 D2 – średnica podziałowa PCD \ pitch circle diameter PCD \ диаметр расположения крепежных отверстий  
 d – średnica otworów przylączca \ bolt holes diameter \ диаметр крепежных отверстий  
 ET – offset \ offset \ вылет ET

# Information of MULTISTAR wheels

## SAFETY & MOUNTING RECOMMENDATIONS

It is important to handle wheels with maximum care, and pay special attention to its safe usage, mounting, demounting and service. Users have to follow all conditions and norms according to industry, national and international regulations. As J&G we will point out just those which we consider as the most common and important.

Before servicing, disc wheels have to be checked for following possible damages

1. Cracks on the disc and/or rim
2. Asymmetric shape of disc contact surface
3. Deformed (damage, burr, excessive corrosion etc) stud holes
4. Deformed (damage, burr, excessive corrosion etc) flange
5. Excessive corrosion
6. Excessive wear
7. Damaged rings of multi-piece wheels.

**Using wheels/components under these conditions is strictly forbidden. Damaged parts should be replaced.**

While mounting the wheel on a hub you have to ensure that all surfaces are clean, free from rust and deposits. Elements of different mounting types should not be confused, since this may result in loss of torque, disc surface cracks, bolts and studs damage, and loss of wheel. Applied torque level should correspond to instructions of vehicle manufacture. Nuts installation has to be done crosswise, with gradual increase of torque level. Tightening of nuts on the wheel has to be checked 100km after first installation and regularly during usage.

Mounting and demounting of tire on the wheels has to be done by qualified personnel in well-equipped service points, according to specifications and procedures stipulated by ETRTO, TRA and other industry, national and international regulations. You have to ensure that all surfaces are clean, free from rust and deposits. It is crucial to match properly wheel and tire sizes according to above mentioned standards and recommendations of the vehicle manufacturer. Mismatch can result in serious damages and injuries. Diameter shown on the tire should exactly match the diameter stamped on the rim/wheel. Tires must be completely deflated before demounting wheel or components of the wheel from the vehicle. Avoid standing in front of multi-piece wheels during assembly; damaged components might spring off.

Mixing components of various manufactures may result in fatal injuries, therefore only matching parts of one manufacture and one wheel system can be assembled.

Repair or of steel wheels is strictly prohibited.

Especially dangerous is:

1. Welding of rims or wheels
2. Repair of damaged stud holes
3. Repair of deformed center hole
4. Straightening of disc contact surface
5. Straightening of rim flanges

## WARRANTY POLICY

J&G warranties that delivered goods are free from defects in materials and workmanship and are produced according to provided technical documentation.

The buyer should examine goods immediately upon receipt and advise Seller in writing, of any discrepancy in terms of numbers or quality. Failure to advise Seller within 10 days would presume goods to be acceptable.

Normal wear is not covered under warranty. The warranty also does not cover damage resulting from improper handling of products, for example overloading above the capacities specified or violating standards stipulated by ETRTO (European Tyre and Rim Technical Organization) and TRA (Tire & Rim Association) or using tires which do not correspond to both standards.

J&G has no obligation under warranty for goods if they were modified, or processed (including welding of disc to rim, drilling of stud holes, mechanical processing of surface etc.) Repair of steel wheels and their components is strictly prohibited.

J&G has no obligation under warranty for goods if spare parts produced by other manufacturers are used with them.

The onus of submitting a claim together with corroborative evidence is the sole responsibility of the Buyer. This includes: proving presence of defect itself on exact J&G products, the fact that defect appeared within warranty period of exact products, the fact that notification of defect was sent on time. Under request of J&G, the Buyer should be able to provide proof that products were working according to conditions recommended by ETRTO, TRA and/or J&G.

J&G warranties that proven defects will be corrected either through replacement of goods or through compensation of their EXW price at the moment of initial delivery of goods.

The Buyer is obligated to store in good conditions all claimed wheels and to provide samples of defective wheels or wheels which are deemed to be claimed by the Buyer upon request from J&G.